


Product datasheet

Anti-Cyclophilin A antibody ab154388

★★★★★ [1 Abreviews](#) [2 References](#) [3 Images](#)

Overview

Product name	Anti-Cyclophilin A antibody
Description	Rabbit polyclonal to Cyclophilin A
Host species	Rabbit
Tested applications	Suitable for: WB, IHC-P
Species reactivity	Reacts with: Mouse, Human Predicted to work with: Rat, Rabbit, Chicken, Pig, Monkey 
Immunogen	Recombinant fragment corresponding to a region within amino acids 1-165 of Human Cyclophilin A (Uniprot ID: P62937)
Positive control	293T, H1299, HeLa, HepG2, Molt-4, Raji and Mouse brain whole cell lysates. SW480 xenograft.
General notes	<p>The Life Science industry has been in the grips of a reproducibility crisis for a number of years. Abcam is leading the way in addressing this with our range of recombinant monoclonal antibodies and knockout edited cell lines for gold-standard validation. Please check that this product meets your needs before purchasing.</p> <p>If you have any questions, special requirements or concerns, please send us an inquiry and/or contact our Support team ahead of purchase. Recommended alternatives for this product can be found below, along with publications, customer reviews and Q&As</p>

Properties

Form	Liquid
Storage instructions	Shipped at 4°C. Upon delivery aliquot. Store at -20°C or -80°C. Avoid freeze / thaw cycle.
Storage buffer	pH: 7 Preservative: 0.01% Thimerosal (merthiolate) Constituents: 1.21% Tris, 0.75% Glycine, 20% Glycerol (glycerin, glycerine)
Purity	Immunogen affinity purified
Clonality	Polyclonal
Isotype	IgG

Applications

The Abpromise guarantee

Our **Abpromise guarantee** covers the use of ab154388 in the following tested applications.

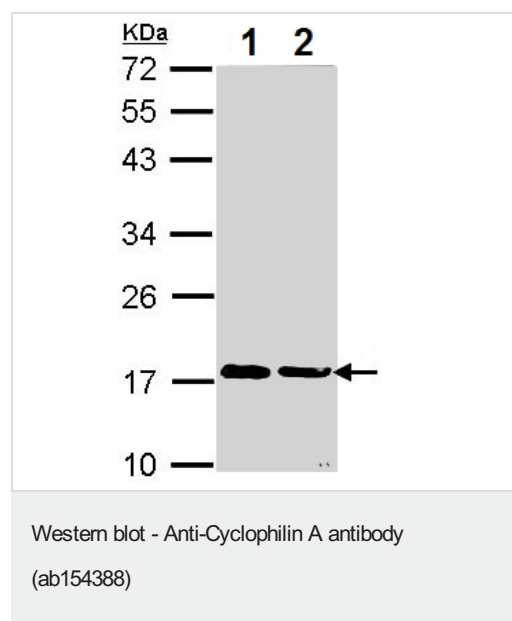
The application notes include recommended starting dilutions; optimal dilutions/concentrations should be determined by the end user.

Application	Abreviews	Notes
WB		1/500 - 1/3000. Predicted molecular weight: 18 kDa.
IHC-P		1/100 - 1/1000. Perform heat mediated antigen retrieval with citrate buffer pH 6 before commencing with IHC staining protocol.

Target

Function	PPases accelerate the folding of proteins. It catalyzes the cis-trans isomerization of proline imidic peptide bonds in oligopeptides.
Sequence similarities	Belongs to the cyclophilin-type PPase family. PPase A subfamily. Contains 1 PPase cyclophilin-type domain.
Cellular localization	Cytoplasm.

Images



All lanes : Anti-Cyclophilin A antibody (ab154388) at 1/1000 dilution

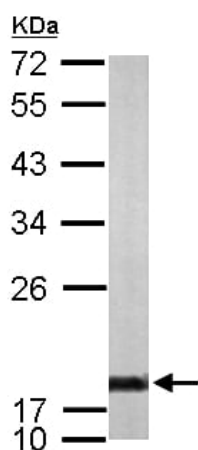
Lane 1 : Molt-4 whole cell lysate

Lane 2 : Raji whole cell lysate

Lysates/proteins at 30 µg per lane.

Predicted band size: 18 kDa

12% SDS-PAGE

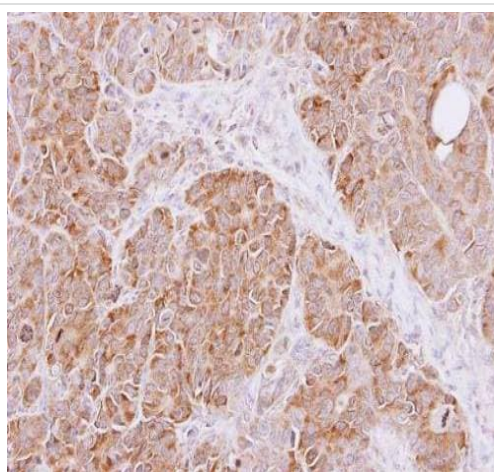


Western blot - Anti-Cyclophilin A antibody
(ab154388)

Anti-Cyclophilin A antibody (ab154388) at 1/1000 dilution + Mouse
brain whole cell lysate at 50 µg

Predicted band size: 18 kDa

12% SDS-PAGE



Immunohistochemistry (Formalin/PFA-fixed paraffin-
embedded sections) - Anti-Cyclophilin A antibody
(ab154388)

Immunohistochemical analysis of paraffin-embedded SW480
xenograft labeling Cyclophilin A with ab154388 at 1/100 dilution.

Please note: All products are "FOR RESEARCH USE ONLY. NOT FOR USE IN DIAGNOSTIC PROCEDURES"

Our Abpromise to you: Quality guaranteed and expert technical support

- Replacement or refund for products not performing as stated on the datasheet
- Valid for 12 months from date of delivery
- Response to your inquiry within 24 hours
- We provide support in Chinese, English, French, German, Japanese and Spanish
- Extensive multi-media technical resources to help you
- We investigate all quality concerns to ensure our products perform to the highest standards

If the product does not perform as described on this datasheet, we will offer a refund or replacement. For full details of the Abpromise, please visit <https://www.abcam.com/abpromise> or contact our technical team.

Terms and conditions

- Guarantee only valid for products bought direct from Abcam or one of our authorized distributors