


Product datasheet

Anti-Cyclophilin A antibody ab41684

★★★★★ [7 Abreviews](#) [53 References](#) [4 Images](#)

Overview

| | |
|----------------------------|---|
| Product name | Anti-Cyclophilin A antibody |
| Description | Rabbit polyclonal to Cyclophilin A |
| Host species | Rabbit |
| Specificity | Replenishment batches of our polyclonal antibody, ab41684 are tested in WB. Previous batches were additionally validated in ICC/IF. This application is still expected to work and is covered by our Abpromise guarantee. You may also be interested in our alternative recombinant antibody, ab126738 . |
| Tested applications | Suitable for: WB, ICC/IF |
| Species reactivity | Reacts with: Rat, Human Predicted to work with: Mouse, Cow, Dog, Pig, Monkey, Gorilla, Chinese hamster, Orangutan  |
| Immunogen | Synthetic peptide conjugated to KLH derived from within residues 100 to the C-terminus of Human Cyclophilin A. Read Abcam's proprietary immunogen policy (Peptide available as ab42406 .) |
| General notes | <p>The Life Science industry has been in the grips of a reproducibility crisis for a number of years. Abcam is leading the way in addressing this with our range of recombinant monoclonal antibodies and knockout edited cell lines for gold-standard validation. Please check that this product meets your needs before purchasing.</p> <p>If you have any questions, special requirements or concerns, please send us an inquiry and/or contact our Support team ahead of purchase. Recommended alternatives for this product can be found below, along with publications, customer reviews and Q&As</p> |

Properties

| | |
|-----------------------------|--|
| Form | Liquid |
| Storage instructions | Shipped at 4°C. Store at +4°C short term (1-2 weeks). Upon delivery aliquot. Store at -20°C or -80°C. Avoid freeze / thaw cycle. |
| Storage buffer | pH: 7.40 Preservative: 0.02% Sodium azide Constituent: PBS |

Batches of this product that have a concentration < 1mg/ml may have BSA added as a stabilising

agent. If you would like information about the formulation of a specific lot, please contact our scientific support team who will be happy to help.

| | |
|------------------|-----------------------------|
| Purity | Immunogen affinity purified |
| Clonality | Polyclonal |
| Isotype | IgG |

Applications

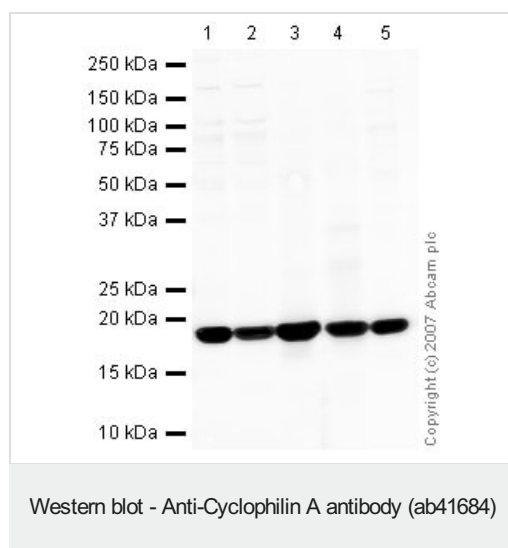
The Abpromise guarantee Our **Abpromise guarantee** covers the use of ab41684 in the following tested applications. The application notes include recommended starting dilutions; optimal dilutions/concentrations should be determined by the end user.

| Application | Abreviews | Notes |
|---------------|-----------|--|
| WB | ★★★★★ (3) | Use a concentration of 1 µg/ml. Detects a band of approximately 18 kDa (predicted molecular weight: 18 kDa). |
| ICC/IF | ★★★★★ (1) | Use a concentration of 1 µg/ml. |

Target

| | |
|------------------------------|---|
| Function | PPases accelerate the folding of proteins. It catalyzes the cis-trans isomerization of proline imidic peptide bonds in oligopeptides. |
| Sequence similarities | Belongs to the cyclophilin-type PPase family. PPase A subfamily. Contains 1 PPase cyclophilin-type domain. |
| Cellular localization | Cytoplasm. |

Images



All lanes : Anti-Cyclophilin A antibody (ab41684) at 1 µg/ml

Lane 1 : HeLa (Human epithelial carcinoma cell line) Whole Cell Lysate

Lane 2 : A431 (Human epithelial carcinoma cell line) Whole Cell Lysate

Lane 3 : Human lymph node tissue lysate - total protein ([ab29871](#))

Lane 4 : Human thymus tissue lysate - total protein ([ab30146](#))

Lane 5 : Lung (Rat) Tissue Lysate

Lysates/proteins at 10 µg per lane.

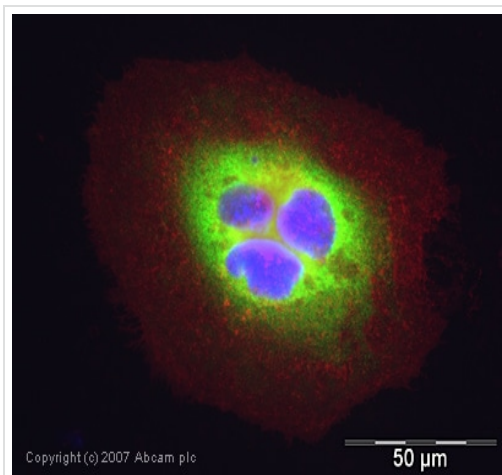
Secondary

All lanes : IRDye 680 Conjugated Goat Anti-Rabbit IgG (H+L) at 1/10000 dilution

Performed under reducing conditions.

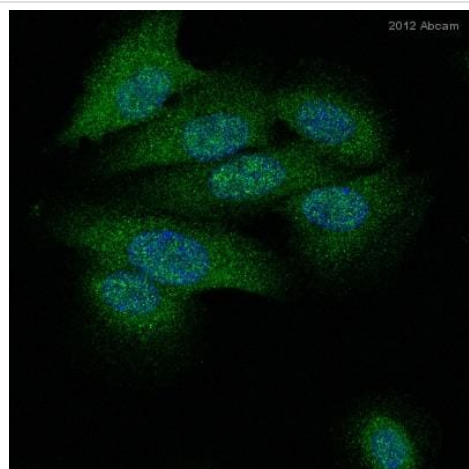
Predicted band size: 18 kDa

Observed band size: 18 kDa



Immunocytochemistry/ Immunofluorescence - Anti-Cyclophilin A antibody (ab41684)

ICC/IF image of ab41684 stained human HeLa cells. The cells were PFA fixed (10 min), permeabilised in TBS-T (20 min) and incubated with the antibody (ab41684, 1µg/ml) for 1h at room temperature. 1%BSA / 10% normal serum / 0.3M glycine was used to quench autofluorescence and block non-specific protein-protein interactions. The secondary antibody (green) was Alexa Fluor® 488 goat anti-rabbit IgG (H+L) used at a 1/1000 dilution for 1h. Alexa Fluor® 594 WGA was used to label plasma membranes (red). DAPI was used to stain the cell nuclei (blue).



Immunocytochemistry/ Immunofluorescence - Anti-Cyclophilin A antibody (ab41684)

This image is courtesy of an abreview submitted by Alina Macovei.

Immunocytochemistry/ Immunofluorescence analysis of HepaRG cells labeling Cyclophilin A with ab41684 at 1µg/ml. Cells were fixed with formaldehyde and permeabilized with 0.2% Triton X-100 in PBS. The cells were blocked with 1% milk for 20 minutes at room temperature. A polyclonal goat anti-rabbit Alexa Fluor 488 secondary antibody was used at 1/400 dilution.



Western blot - Anti-Cyclophilin A antibody (ab41684)

ab88202 is a GST-tagged recombinant protein with an expected molecular weight of 50kDa.

Please note: All products are "FOR RESEARCH USE ONLY. NOT FOR USE IN DIAGNOSTIC PROCEDURES"

Our Abpromise to you: Quality guaranteed and expert technical support

- Replacement or refund for products not performing as stated on the datasheet
- Valid for 12 months from date of delivery
- Response to your inquiry within 24 hours
- We provide support in Chinese, English, French, German, Japanese and Spanish
- Extensive multi-media technical resources to help you
- We investigate all quality concerns to ensure our products perform to the highest standards

If the product does not perform as described on this datasheet, we will offer a refund or replacement. For full details of the Abpromise, please visit <https://www.abcam.com/abpromise> or contact our technical team.

Terms and conditions

- Guarantee only valid for products bought direct from Abcam or one of our authorized distributors