



Product datasheet

Anti-Cyclophilin B antibody [C2D4] ab238511

1 Image

Overview

Product name	Anti-Cyclophilin B antibody [C2D4]
Description	Rabbit monoclonal [C2D4] to Cyclophilin B
Host species	Rabbit
Tested applications	Suitable for: WB
Species reactivity	Reacts with: Mouse, Human
Immunogen	Synthetic peptide corresponding to Human Cyclophilin B aa 150 to the C-terminus. Database link: P23284
	 Run BLAST with  Run BLAST with
Positive control	WB: HeLa, HepG2 and NIH/3T3 cell extracts.
General notes	<p>The Life Science industry has been in the grips of a reproducibility crisis for a number of years. Abcam is leading the way in addressing this with our range of recombinant monoclonal antibodies and knockout edited cell lines for gold-standard validation. Please check that this product meets your needs before purchasing.</p> <p>If you have any questions, special requirements or concerns, please send us an inquiry and/or contact our Support team ahead of purchase. Recommended alternatives for this product can be found below, along with publications, customer reviews and Q&As</p>

Properties

Form	Liquid
Storage instructions	Shipped at 4°C. Store at +4°C short term (1-2 weeks). Upon delivery aliquot. Store at -20°C long term. Avoid freeze / thaw cycle.
Storage buffer	pH: 7.30 Preservative: 0.02% Sodium azide Constituents: PBS, 50% Glycerol
Purity	Affinity purified
Clonality	Monoclonal
Clone number	C2D4
Isotype	IgG

Applications

The Abpromise guarantee

Our **Abpromise guarantee** covers the use of ab238511 in the following tested applications.

The application notes include recommended starting dilutions; optimal dilutions/concentrations should be determined by the end user.

Application	Abreviews	Notes
WB		1/500 - 1/2000. Predicted molecular weight: 24 kDa.

Target

Function

PPlases accelerate the folding of proteins. It catalyzes the cis-trans isomerization of proline imidic peptide bonds in oligopeptides.

Involvement in disease

Defects in PPIB are the cause of osteogenesis imperfecta type 9 (OI9) [MIM:259440]. OI9 is a connective tissue disorder characterized by bone fragility, low bone mass and bowing of limbs due to multiple fractures. Short limb dwarfism and blue sclerae are observed in some but not all patients.

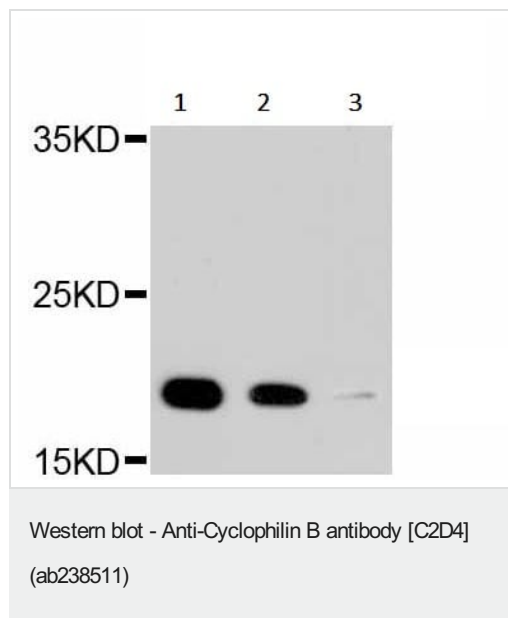
Sequence similarities

Belongs to the cyclophilin-type PPlase family. PPlase B subfamily.
Contains 1 PPlase cyclophilin-type domain.

Cellular localization

Endoplasmic reticulum lumen. Melanosome. Identified by mass spectrometry in melanosome fractions from stage I to stage IV.

Images



All lanes : Anti-Cyclophilin B antibody [C2D4] (ab238511) at 1/500 dilution

Lane 1 : HeLa (human epithelial cell line from cervix adenocarcinoma) cell extract

Lane 2 : HepG2 (human liver hepatocellular carcinoma cell line) cell extract

Lane 3 : NIH/3T3 (mouse embryo fibroblast cell line) cell extract

Lysates/proteins at 25 µg per lane.

Secondary

All lanes : HRP Goat Anti-Rabbit IgG (H+L) at 1/10000 dilution

Predicted band size: 24 kDa

Blocking buffer: 3% non-fat dry milk in TBST.

Please note: All products are "FOR RESEARCH USE ONLY. NOT FOR USE IN DIAGNOSTIC PROCEDURES"

Our Abpromise to you: Quality guaranteed and expert technical support

- Replacement or refund for products not performing as stated on the datasheet
- Valid for 12 months from date of delivery
- Response to your inquiry within 24 hours

- We provide support in Chinese, English, French, German, Japanese and Spanish
- Extensive multi-media technical resources to help you
- We investigate all quality concerns to ensure our products perform to the highest standards

If the product does not perform as described on this datasheet, we will offer a refund or replacement. For full details of the Abpromise, please visit <https://www.abcam.com/abpromise> or contact our technical team.

Terms and conditions

- Guarantee only valid for products bought direct from Abcam or one of our authorized distributors