

Product datasheet

Anti-CYP1A1 antibody ab126887

4 Images

Overview

Product name	Anti-CYP1A1 antibody
Description	Goat polyclonal to CYP1A1
Host species	Goat
Tested applications	Suitable for: ICC/IF, WB, IHC-P
Species reactivity	Reacts with: Mouse, Rat, Human
Immunogen	Synthetic peptide corresponding to Mouse CYP1A1 aa 294-308 (internal sequence) (Cysteine residue). Sequence: C-QDRKLDENANVQLSD

Database link: [NP_001129531.1](#)

 [Run BLAST with](#)

 [Run BLAST with](#)

Positive control WB: Human and rat lung lysate. IHC-P: Human tonsil tissue. ICC/IF: NIH3T3 cells

General notes The Life Science industry has been in the grips of a reproducibility crisis for a number of years. Abcam is leading the way in addressing this with our range of recombinant monoclonal antibodies and knockout edited cell lines for gold-standard validation. Please check that this product meets your needs before purchasing.

If you have any questions, special requirements or concerns, please send us an inquiry and/or contact our Support team ahead of purchase. Recommended alternatives for this product can be found below, along with publications, customer reviews and Q&As

Properties

Form	Liquid
Storage instructions	Shipped at 4°C. Upon delivery aliquot and store at -20°C. Avoid repeated freeze / thaw cycles.
Storage buffer	pH: 7.30 Preservative: 0.02% Sodium azide Constituents: 0.5% BSA, 99% Tris buffered saline
Purity	Immunogen affinity purified
Purification notes	Purified from Goat serum by ammonium sulphate precipitation followed by antigen affinity chromatography using the immunizing peptide.

Clonality	Polyclonal
Isotype	IgG

Applications

The Abpromise guarantee Our **Abpromise guarantee** covers the use of ab126887 in the following tested applications.

The application notes include recommended starting dilutions; optimal dilutions/concentrations should be determined by the end user.

Application	Abreviews	Notes
ICC/IF		Use a concentration of 10 µg/ml.
WB		Use a concentration of 0.1 - 0.3 µg/ml. Detects a band of approximately 59 kDa (predicted molecular weight: 55 kDa). 1 hour primary incubation is recommended for this product.
IHC-P		Use a concentration of 10 µg/ml. Perform heat mediated antigen retrieval with Tris/EDTA buffer pH 9.0 before commencing with IHC staining protocol.

Target

Function	Cytochromes P450 are a group of heme-thiolate monooxygenases. In liver microsomes, this enzyme is involved in an NADPH-dependent electron transport pathway. It oxidizes a variety of structurally unrelated compounds, including steroids, fatty acids, and xenobiotics.
Tissue specificity	Lung, lymphocytes and placenta.
Sequence similarities	Belongs to the cytochrome P450 family.
Cellular localization	Endoplasmic reticulum membrane. Microsome membrane.

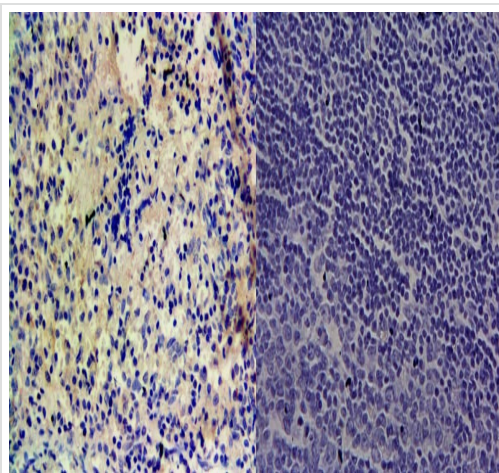
Images



Anti-CYP1A1 antibody (ab126887) at 0.1 µg/ml + Rat lung lysate (in RIPA buffer) at 35 µg

Developed using the ECL technique.

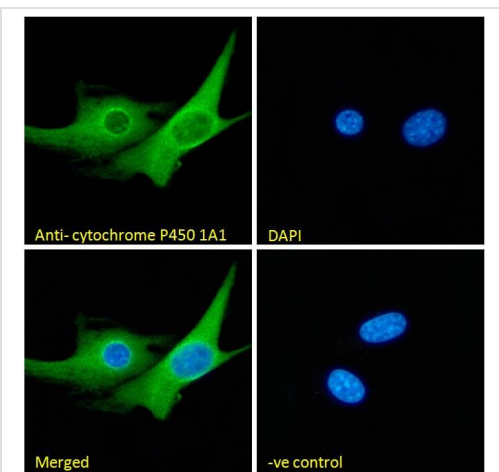
Predicted band size: 55 kDa



Immunohistochemistry (Formalin/PFA-fixed paraffin-embedded sections) - Anti-CYP1A1 antibody (ab126887)

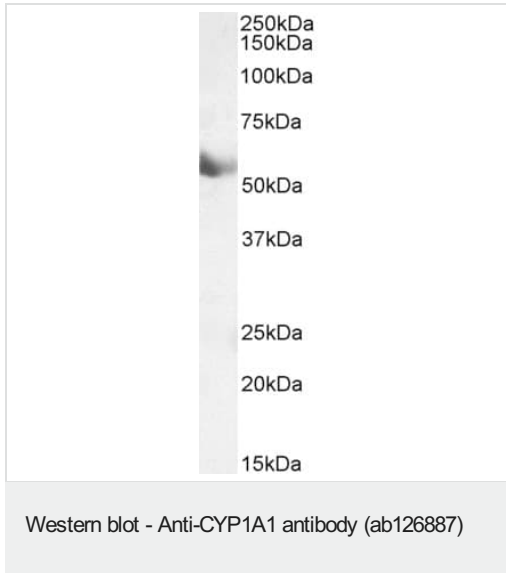
Immunohistochemistry analysis of paraffin embedded human tonsil tissue labeling CYP1A1 with ab126887. Heat induced antigen retrieval was performed with Tris-EDTA pH 9, HRP-Staining (1/500) (left).

Negative Control showing staining of paraffin embedded Human Tonsil, with no primary antibody (right).



Immunocytochemistry/ Immunofluorescence - Anti-CYP1A1 antibody (ab126887)

Immunocytochemistry/Immunofluorescence analysis of paraformaldehyde fixed NIH3T3 cells, permeabilized with 0.15% Triton. Primary incubation 1hr (10µg/mL) followed by Alexa Fluor 488 secondary antibody (2µg/mL), showing endoplasmic reticulum and cytoplasmic staining. The nuclear stain is DAPI (blue). Negative control: Unimmunized goat IgG (10µg/mL) followed by Alexa Fluor 488 secondary antibody (2µg/mL).



Anti-CYP1A1 antibody (ab126887) at 0.1 µg/ml + Human Lung lysate (35 µg protein in RIPA buffer)

Predicted band size: 55 kDa

Detected by chemiluminescence.

Please note: All products are "FOR RESEARCH USE ONLY. NOT FOR USE IN DIAGNOSTIC PROCEDURES"

Our Abpromise to you: Quality guaranteed and expert technical support

- Replacement or refund for products not performing as stated on the datasheet
- Valid for 12 months from date of delivery
- Response to your inquiry within 24 hours
- We provide support in Chinese, English, French, German, Japanese and Spanish
- Extensive multi-media technical resources to help you
- We investigate all quality concerns to ensure our products perform to the highest standards

If the product does not perform as described on this datasheet, we will offer a refund or replacement. For full details of the Abpromise, please visit <https://www.abcam.com/abpromise> or contact our technical team.

Terms and conditions

- Guarantee only valid for products bought direct from Abcam or one of our authorized distributors