

Product datasheet

Anti-CYP1A1 antibody ab235185

[1 References](#) [3 Images](#)

Overview

Product name	Anti-CYP1A1 antibody
Description	Rabbit polyclonal to CYP1A1
Host species	Rabbit
Tested applications	Suitable for: ICC/IF, IHC-P, WB
Species reactivity	Reacts with: Human
Immunogen	Synthetic peptide. This information is considered to be commercially sensitive.
Positive control	ICC/IF: HepG2 cells. IHC-P: Human kidney tissue. WB: CYP1A1 overexpressing lysate.
General notes	<p>The Life Science industry has been in the grips of a reproducibility crisis for a number of years. Abcam is leading the way in addressing this with our range of recombinant monoclonal antibodies and knockout edited cell lines for gold-standard validation. Please check that this product meets your needs before purchasing.</p> <p>If you have any questions, special requirements or concerns, please send us an inquiry and/or contact our Support team ahead of purchase. Recommended alternatives for this product can be found below, along with publications, customer reviews and Q&As</p>

Properties

Form	Liquid
Storage instructions	Shipped at 4°C. Store at +4°C short term (1-2 weeks). Upon delivery aliquot. Store at -20°C long term. Avoid freeze / thaw cycle.
Storage buffer	Preservative: 0.01% Sodium azide Constituent: PBS
Purity	Affinity purified
Clonality	Polyclonal
Isotype	IgG

Applications

The Abpromise guarantee Our **Abpromise guarantee** covers the use of ab235185 in the following tested applications. The application notes include recommended starting dilutions; optimal dilutions/concentrations should be determined by the end user.

Application	Abreviews	Notes
ICC/IF		Use a concentration of 15 µg/ml. Incubate with primary antibody overnight at 4°C.
IHC-P		1/100. Perform heat mediated antigen retrieval with citrate buffer pH 6 before commencing with IHC staining protocol. Incubate with primary antibody for 30 minutes at RT.
WB		1/1000. Predicted molecular weight: 58 kDa.

Target

Function

Cytochromes P450 are a group of heme-thiolate monooxygenases. In liver microsomes, this enzyme is involved in an NADPH-dependent electron transport pathway. It oxidizes a variety of structurally unrelated compounds, including steroids, fatty acids, and xenobiotics.

Tissue specificity

Lung, lymphocytes and placenta.

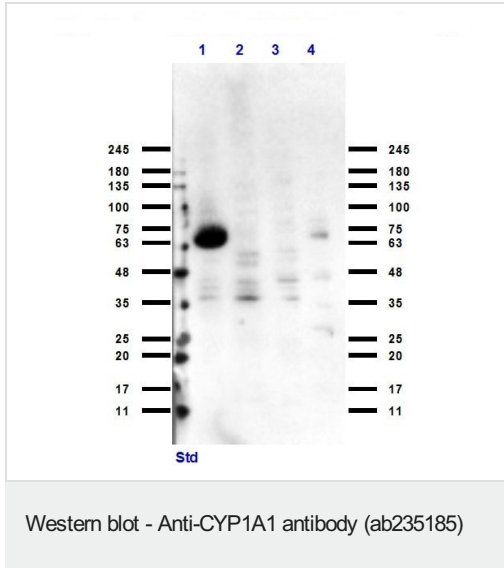
Sequence similarities

Belongs to the cytochrome P450 family.

Cellular localization

Endoplasmic reticulum membrane. Microsome membrane.

Images



All lanes : Anti-CYP1A1 antibody (ab235185) at 1/1000 dilution

Lane 1 : CYP1A1 overexpressing lysate

Lane 2 : HEK-293T (human epithelial cell line from embryonic kidney transformed with large T antigen) lysate

Lane 3 : K562 (human chronic myelogenous leukemia cell line from bone marrow) lysate

Lane 4 : PC-12 (rat adrenal gland pheochromocytoma cell line) lysate

Secondary

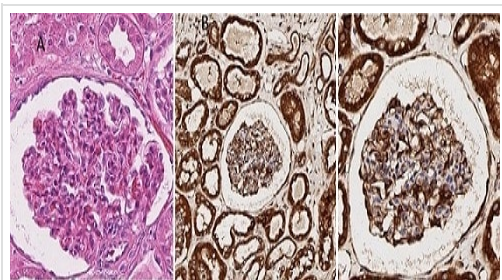
All lanes : Rabbit IgG (H&L) secondary antibody peroxidase conjugated Pre-adsorbed at 1/70000 dilution

Predicted band size: 58 kDa

Exposure time: 5 seconds

Blocking/Dilution buffer: Proprietary protein formulation in TRIS buffered saline at pH 7.6 with thimerisol added as an anti-microbial

agent.



Immunohistochemistry (Formalin/PFA-fixed paraffin-embedded sections) - Anti-CYP1A1 antibody (ab235185)

Formalin/PFA-fixed paraffin-embedded human kidney tissue stained for CYP1A1 with ab235185 at a 1/100 dilution in immunohistochemical analysis. Secondary antibody is an anti-Rabbit poly-HRP-IgG.

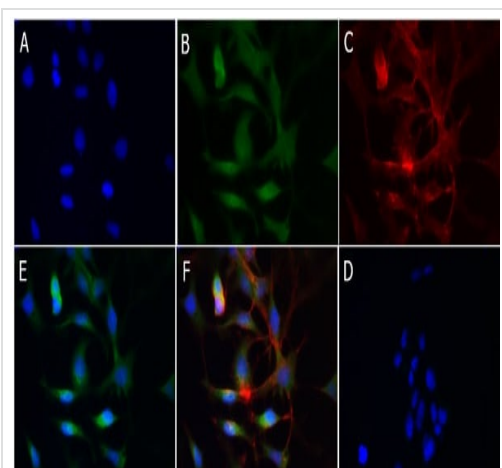
Incubated with primary antibody for 30 minutes at room temperature, followed by DAB staining.

Counterstained with hematoxylin. HIER using citrate buffer for 20 minutes.

A. Human kidney tissue counterstained with Hematoxylin-Eosin.

B. Human kidney tissue stained for Cytochrome P450 1A1 (20X).

C. Human kidney tissue stained for Cytochrome P450 1A1 (40X).



Immunocytochemistry/ Immunofluorescence - Anti-CYP1A1 antibody (ab235185)

HepG2 (human liver hepatocellular carcinoma cell line) cells stained for CYP1A1 using ab235185 at 15 µg/ml in ICC/IF.

Cells were fixed in 4% PFA and permeabilized using 0.3% Triton X-100, then incubated with the primary antibody overnight at 4°C. Secondary antibody is a Donkey anti-Rabbit IgG DyLight™ 488 (Preadsorbed), at 5 µg/ml for 1 hour at room temperature.

Panel A: DAPI (blue)

Panel B: ab235185 + secondary antibody (green)

Panel C: Actin-Phalloidin 555 (red)

Panel D: Secondary antibody only

Panel E: Merge A+B

Panel F: Merge A+B+C

Please note: All products are "FOR RESEARCH USE ONLY. NOT FOR USE IN DIAGNOSTIC PROCEDURES"

Our Promise to you: Quality guaranteed and expert technical support

- Replacement or refund for products not performing as stated on the datasheet
- Valid for 12 months from date of delivery
- Response to your inquiry within 24 hours
- We provide support in Chinese, English, French, German, Japanese and Spanish
- Extensive multi-media technical resources to help you
- We investigate all quality concerns to ensure our products perform to the highest standards

If the product does not perform as described on this datasheet, we will offer a refund or replacement. For full details of the Abpromise, please visit <https://www.abcam.com/abpromise> or contact our technical team.

Terms and conditions

- Guarantee only valid for products bought direct from Abcam or one of our authorized distributors