

Product datasheet

Anti-CYP7B1 antibody [EPR8395] ab138497

Recombinant RabMAb

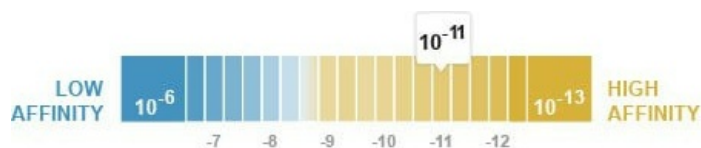
★★★★★ [1 Abreviews](#) [10 References](#) [3 Images](#)

Overview

Product name	Anti-CYP7B1 antibody [EPR8395]
Description	Rabbit monoclonal [EPR8395] to CYP7B1
Host species	Rabbit
Tested applications	Suitable for: WB Unsuitable for: Flow Cyt, ICC/IF, IHC-P or IP
Species reactivity	Reacts with: Human
Immunogen	Synthetic peptide within Human CYP7B1 aa 400-500. The exact sequence is proprietary.
Positive control	PC3, Human fetal liver, and Human fetal kidney lysates
General notes	<p>This product is a recombinant monoclonal antibody, which offers several advantages including:</p> <ul style="list-style-type: none"> - High batch-to-batch consistency and reproducibility - Improved sensitivity and specificity - Long-term security of supply - Animal-free production <p>For more information see here.</p> <p>Our RabMAb[®] technology is a patented hybridoma-based technology for making rabbit monoclonal antibodies. For details on our patents, please refer to RabMAb[®] patents.</p> <p>Mouse, Rat: We have preliminary internal testing data to indicate this antibody may not react with these species. Please contact us for more information.</p>

Properties

Form	Liquid
Storage instructions	Shipped at 4°C. Upon delivery aliquot and store at -20°C. Avoid freeze / thaw cycles.
Dissociation constant (K_D)	K _D = 4.10 x 10 ⁻¹¹ M



[Learn more about K_D](#)

Storage buffer	pH: 7.2 Preservative: 0.01% Sodium azide Constituents: 9% PBS, 40% Glycerol (glycerin, glycerine), 0.05% BSA, 50% Tissue culture supernatant
Purity	Tissue culture supernatant
Clonality	Monoclonal
Clone number	EPR8395
Isotype	IgG

Applications

The Abpromise guarantee Our **Abpromise guarantee** covers the use of ab138497 in the following tested applications. The application notes include recommended starting dilutions; optimal dilutions/concentrations should be determined by the end user.

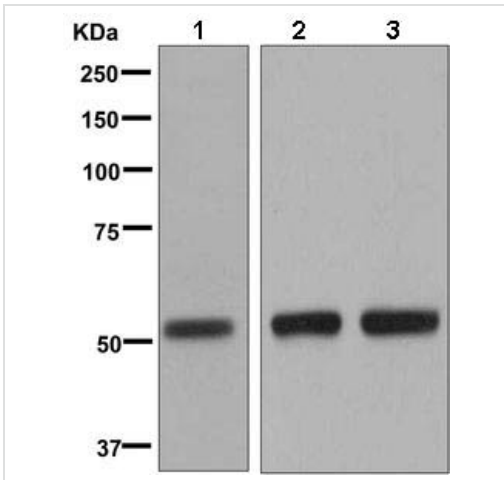
Application	Abreviews	Notes
WB	★★★★★ (1)	1/1000 - 1/10000. Detects a band of approximately 55 kDa (predicted molecular weight: 58 kDa).

Application notes Is unsuitable for Flow Cyt, ICC/IF, IHC-P or IP.

Target

Tissue specificity	Brain, testis, ovary, prostate, liver, colon, kidney, and small intestine.
Pathway	Lipid metabolism; bile acid biosynthesis.
Involvement in disease	Defects in CYP7B1 are the cause of spastic paraplegia autosomal recessive type 5A (SPG5A) [MIM:270800]. Spastic paraplegia is a neurodegenerative disorder characterized by a slow, gradual, progressive weakness and spasticity of the lower limbs. Rate of progression and the severity of symptoms are quite variable. Initial symptoms may include difficulty with balance, weakness and stiffness in the legs, muscle spasms, and dragging the toes when walking. In some forms of the disorder, bladder symptoms (such as incontinence) may appear, or the weakness and stiffness may spread to other parts of the body. Defects in CYP7B1 are the cause of congenital bile acid synthesis defect type 3 (CBAS3) [MIM:613812]. Clinical features include severe cholestasis, cirrhosis and liver synthetic failure. Hepatic microsomal oxysterol 7-alpha-hydroxylase activity is undetectable.
Sequence similarities	Belongs to the cytochrome P450 family.
Cellular localization	Endoplasmic reticulum membrane. Microsome membrane.

Images



Western blot - Anti-CYP7B1 antibody [EPR8395] (ab138497)

All lanes : Anti-CYP7B1 antibody [EPR8395] (ab138497) at 1/1000 dilution

Lane 1 : PC3 lysate

Lane 2 : Human fetal liver lysate

Lane 3 : Human fetal kidney lysate

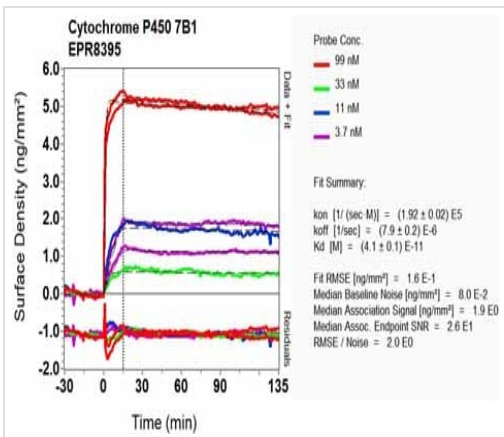
Lysates/proteins at 30 µg per lane.

Secondary

All lanes : HRP labelled goat anti-rabbit at 1/2000 dilution

Predicted band size: 58 kDa

Observed band size: 55 kDa







O1-RD Scanning - Anti-CYP7B1 antibody [EPR8395] (ab138497)

Equilibrium dissociation constant (K_D)

Learn more about K_D

[Click here to learn more about \$K_D\$](#)

Why choose a recombinant antibody?

 <p>Research with confidence Consistent and reproducible results</p>	 <p>Long-term and scalable supply Recombinant technology</p>
 <p>Success from the first experiment Confirmed specificity</p>	 <p>Ethical standards compliant Animal-free production</p>

Anti-CYP7B1 antibody [EPR8395] (ab138497)

Please note: All products are "FOR RESEARCH USE ONLY. NOT FOR USE IN DIAGNOSTIC PROCEDURES"

Our Abpromise to you: Quality guaranteed and expert technical support

- Replacement or refund for products not performing as stated on the datasheet
- Valid for 12 months from date of delivery
- Response to your inquiry within 24 hours
- We provide support in Chinese, English, French, German, Japanese and Spanish
- Extensive multi-media technical resources to help you
- We investigate all quality concerns to ensure our products perform to the highest standards

If the product does not perform as described on this datasheet, we will offer a refund or replacement. For full details of the Abpromise, please visit <https://www.abcam.com/abpromise> or contact our technical team.

Terms and conditions

- Guarantee only valid for products bought direct from Abcam or one of our authorized distributors