


Product datasheet

Anti-Cystatin-B antibody [EPR3931] ab92449

KO VALIDATED Recombinant RabMAb

5 Images

Overview

Product name	Anti-Cystatin-B antibody [EPR3931]
Description	Rabbit monoclonal [EPR3931] to Cystatin-B
Host species	Rabbit
Tested applications	Suitable for: WB, IHC-P Unsuitable for: ICC/IF or IP
Species reactivity	Reacts with: Human Predicted to work with: Rat 
Immunogen	Synthetic peptide within Human Cystatin-B aa 50-150. The exact sequence is proprietary.
Positive control	WB: HEK293T, U87-MG, JAR, and Human bladder cell lysates. IHC-P: Human colon tissue, human kidney tissue.
General notes	<p>This product is a recombinant monoclonal antibody, which offers several advantages including:</p> <ul style="list-style-type: none"> - High batch-to-batch consistency and reproducibility - Improved sensitivity and specificity - Long-term security of supply - Animal-free production <p>For more information see here.</p> <p>Our RabMAb[®] technology is a patented hybridoma-based technology for making rabbit monoclonal antibodies. For details on our patents, please refer to RabMAb[®] patents.</p> <p>Mouse: We have preliminary internal testing data to indicate this antibody may not react with this species. Please contact us for more information.</p>

Properties

Form	Liquid
Storage instructions	Shipped at 4°C. Store at -20°C. Stable for 12 months at -20°C.
Storage buffer	pH: 7.20 Preservative: 0.05% Sodium azide Constituents: 0.1% BSA, 40% Glycerol (glycerin, glycerine), 9.85% Tris glycine, 50% Tissue culture supernatant

Purity	Tissue culture supernatant
Clonality	Monoclonal
Clone number	EPR3931
Isotype	IgG

Applications

The Abpromise guarantee Our **Abpromise guarantee** covers the use of ab92449 in the following tested applications.

The application notes include recommended starting dilutions; optimal dilutions/concentrations should be determined by the end user.

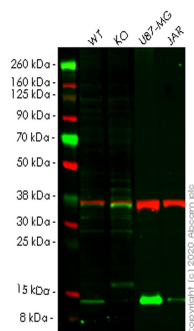
Application	Abreviews	Notes
WB		1/1000 - 1/10000. Predicted molecular weight: 11 kDa.
IHC-P		1/100 - 1/250. Perform heat mediated antigen retrieval before commencing with IHC staining protocol.

Application notes Is unsuitable for ICC/IF or IP.

Target

Function	This is an intracellular thiol proteinase inhibitor. Tightly binding reversible inhibitor of cathepsins L, H and B.
Involvement in disease	Defects in CSTB are the cause of progressive myoclonic epilepsy type 1 (EPM1) [MIM:254800]. EPM1 is an autosomal recessive disorder characterized by severe, stimulus-sensitive myoclonus and tonic-clonic seizures. The onset, occurring between 6 and 13 years of age, is characterized by convulsions. Myoclonus begins 1 to 5 years later. The twitchings occur predominantly in the proximal muscles of the extremities and are bilaterally symmetrical, although asynchronous. At first small, they become late in the clinical course so violent that the victim is thrown to the floor. Mental deterioration and eventually dementia develop.
Sequence similarities	Belongs to the cystatin family.
Cellular localization	Cytoplasm. Nucleus.

Images



Western blot - Anti-Cystatin-B antibody [EPR3931] (ab92449)

All lanes : Anti-Cystatin-B antibody [EPR3931] (ab92449) at 1/1000 dilution

Lane 1 : Wild-type HEK293T cell lysate

Lane 2 : CSTB knockout HEK293T cell lysate

Lane 3 : U87-MG cell lysate

Lane 4 : JAR cell lysate

Lysates/proteins at 20 µg per lane.

Secondary

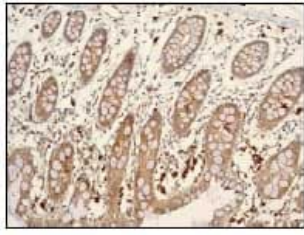
All lanes : Goat anti-Rabbit IgG H&L (IRDye® 800CW) preadsorbed ([ab216773](#)) at 1/10000 dilution

Predicted band size: 11 kDa

Observed band size: 15 kDa

Lanes 1-4: Merged signal (red and green). Green - ab92449 observed at 15 kDa. Red - loading control [ab8245](#) observed at 36 kDa.

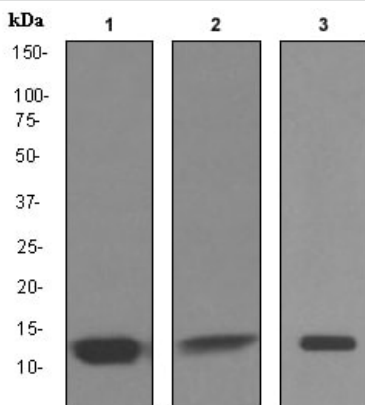
ab92449 Anti-Cystatin-B antibody [EPR3931] was shown to specifically react with Cystatin-B in wild-type HEK293T cells. Loss of signal was observed when knockout cell line [ab266321](#) (knockout cell lysate [ab257905](#)) was used. Wild-type and Cystatin-B knockout samples were subjected to SDS-PAGE. ab92449 and Anti-GAPDH antibody [6C5] - Loading Control ([ab8245](#)) were incubated overnight at 4°C at 1 in 1000 dilution and 1 in 20000 dilution respectively. Blots were developed with Goat anti-Rabbit IgG H&L (IRDye® 800CW) preadsorbed ([ab216773](#)) and Goat anti-Mouse IgG H&L (IRDye® 680RD) preadsorbed ([ab216776](#)) secondary antibodies at 1 in 20000 dilution for 1 hour at room temperature before imaging.



Immunohistochemistry (Formalin/PFA-fixed paraffin-embedded sections) - Anti-Cystatin-B antibody [EPR3931] (ab92449)

ab92449, at 1/100 dilution, staining Cystatin-B in paraffin-embedded Human colon tissue.

Heat mediated antigen retrieval was performed before commencing with IHC staining protocol.



Western blot - Anti-Cystatin-B antibody [EPR3931] (ab92449)

All lanes : Anti-Cystatin-B antibody [EPR3931] (ab92449) at 1/1000 dilution

Lane 1 : U-87 MG (Human glioblastoma-astrocytoma epithelial cell line) cell lysate

Lane 2 : JAR cell lysate

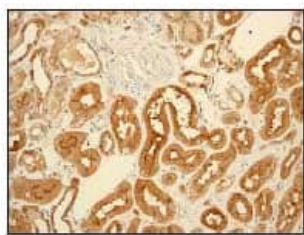
Lane 3 : Human bladder tissue lysate

Lysates/proteins at 10 µg per lane.

Secondary

All lanes : HRP labelled goat anti-rabbit at 1/2000 dilution

Predicted band size: 11 kDa



Immunohistochemistry (Formalin/PFA-fixed paraffin-embedded sections) - Anti-Cystatin-B antibody [EPR3931] (ab92449)

ab92449, at 1/100 dilution, staining Cystatin-B in paraffin-embedded Human kidney tissue.

Heat mediated antigen retrieval was performed before commencing with IHC staining protocol.

Why choose a recombinant antibody?



Research with confidence
Consistent and reproducible results



Long-term and scalable supply
Recombinant technology



Success from the first experiment
Confirmed specificity



Ethical standards compliant
Animal-free production

Anti-Cystatin-B antibody [EPR3931] (ab92449)

Please note: All products are "FOR RESEARCH USE ONLY. NOT FOR USE IN DIAGNOSTIC PROCEDURES"

Our Abpromise to you: Quality guaranteed and expert technical support

- Replacement or refund for products not performing as stated on the datasheet
- Valid for 12 months from date of delivery
- Response to your inquiry within 24 hours
- We provide support in Chinese, English, French, German, Japanese and Spanish
- Extensive multi-media technical resources to help you
- We investigate all quality concerns to ensure our products perform to the highest standards

If the product does not perform as described on this datasheet, we will offer a refund or replacement. For full details of the Abpromise, please visit <https://www.abcam.com/abpromise> or contact our technical team.

Terms and conditions

- Guarantee only valid for products bought direct from Abcam or one of our authorized distributors