



Anti-Cystatin SA/CST2 antibody ab206845

[2 Images](#)

Overview

| | |
|----------------------------|---|
| Product name | Anti-Cystatin SA/CST2 antibody |
| Description | Rabbit polyclonal to Cystatin SA/CST2 |
| Host species | Rabbit |
| Tested applications | Suitable for: IHC-P, WB |
| Species reactivity | Reacts with: Human, Recombinant fragment |
| Immunogen | Recombinant full length protein corresponding to Human Cystatin SA/CST2 aa 1 to the C-terminus. Without signal peptide (BC062679). Database link: P09228 |
| |  Run BLAST with  Run BLAST with |
| Positive control | Human fetal skin |
| General notes | <p>The Life Science industry has been in the grips of a reproducibility crisis for a number of years. Abcam is leading the way in addressing this with our range of recombinant monoclonal antibodies and knockout edited cell lines for gold-standard validation. Please check that this product meets your needs before purchasing.</p> <p>If you have any questions, special requirements or concerns, please send us an inquiry and/or contact our Support team ahead of purchase. Recommended alternatives for this product can be found below, along with publications, customer reviews and Q&As</p> |

Properties

| | |
|-----------------------------|---|
| Form | Lyophilized:Reconstitute in 200ul sterile water |
| Storage instructions | Shipped at 4°C. Store at +4°C short term (1-2 weeks). Upon delivery aliquot. Store at -20°C long term. Avoid freeze / thaw cycle. |
| Storage buffer | pH: 7.20 Preservative: 0.02% Sodium azide Constituents: 98% PBS, 1% BSA |
| Purity | Immunogen affinity purified |
| Clonality | Polyclonal |
| Isotype | IgG |

Applications

The Abpromise guarantee

Our **Abpromise guarantee** covers the use of ab206845 in the following tested applications.

The application notes include recommended starting dilutions; optimal dilutions/concentrations should be determined by the end user.

| Application | Abreviews | Notes |
|-------------|-----------|---|
| IHC-P | | 1/100 - 1/500. |
| WB | | 1/200 - 1/1000. Predicted molecular weight: 16 kDa. |

Target

Function

Thiol protease inhibitor.

Tissue specificity

Expressed in submandibular and sublingual saliva but not in parotid saliva (at protein level).
Expressed in submandibular gland and parotid gland.

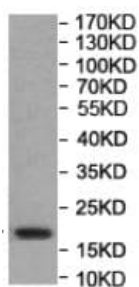
Sequence similarities

Belongs to the cystatin family.

Cellular localization

Secreted.

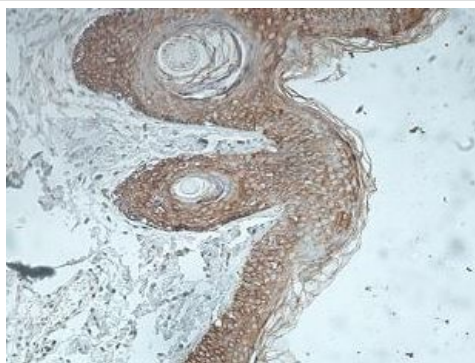
Images



Western blot - Anti-Cystatin SA/CST2 antibody
(ab206845)

Anti-Cystatin SA/CST2 antibody (ab206845) at 1/500 dilution +
Recombinant Cystatin SA/CST2 protein

Predicted band size: 16 kDa



Immunohistochemistry (Formalin/PFA-fixed paraffin-
embedded sections) - Anti-Cystatin SA/CST2
antibody (ab206845)

Immunohistochemical analysis of Human fetal skin labeling Cystatin
SA/CST2 with ab206845 at 1/100 dilution.

Please note: All products are "FOR RESEARCH USE ONLY. NOT FOR USE IN DIAGNOSTIC PROCEDURES"

Our Abpromise to you: Quality guaranteed and expert technical support

- Replacement or refund for products not performing as stated on the datasheet
- Valid for 12 months from date of delivery
- Response to your inquiry within 24 hours
- We provide support in Chinese, English, French, German, Japanese and Spanish
- Extensive multi-media technical resources to help you
- We investigate all quality concerns to ensure our products perform to the highest standards

If the product does not perform as described on this datasheet, we will offer a refund or replacement. For full details of the Abpromise, please visit <https://www.abcam.com/abpromise> or contact our technical team.

Terms and conditions

- Guarantee only valid for products bought direct from Abcam or one of our authorized distributors