

Product datasheet

Anti-Cystatin SN/CST1 antibody ab124281

[2 Images](#)

Overview

Product name	Anti-Cystatin SN/CST1 antibody
Description	Rabbit polyclonal to Cystatin SN/CST1
Host species	Rabbit
Tested applications	Suitable for: IHC-P, ICC/IF, ELISA
Species reactivity	Reacts with: Human
Immunogen	Synthetic peptide corresponding to Human Cystatin SN/CST1 (internal sequence).
Positive control	Human prostate tissue. MCF7 cells.
General notes	<p>The Life Science industry has been in the grips of a reproducibility crisis for a number of years. Abcam is leading the way in addressing this with our range of recombinant monoclonal antibodies and knockout edited cell lines for gold-standard validation. Please check that this product meets your needs before purchasing.</p> <p>If you have any questions, special requirements or concerns, please send us an inquiry and/or contact our Support team ahead of purchase. Recommended alternatives for this product can be found below, along with publications, customer reviews and Q&As</p>

Properties

Form	Liquid
Storage instructions	Shipped at 4°C. Upon delivery aliquot and store at -20°C. Avoid repeated freeze / thaw cycles.
Storage buffer	pH: 7.40 Preservative: 0.02% Sodium azide Constituents: 50% Glycerol (glycerin, glycerine), 0.88% Sodium chloride, 49% PBS
Purity	Immunogen affinity purified
Clonality	Polyclonal
Isotype	IgG

Applications

The Abpromise guarantee Our **Abpromise guarantee** covers the use of ab124281 in the following tested applications. The application notes include recommended starting dilutions; optimal dilutions/concentrations should be determined by the end user.

Application	Abreviews	Notes
IHC-P		Use a concentration of 5 µg/ml.
ICC/IF		1/100 - 1/500.
ELISA		Use at an assay dependent concentration.

Target

Function

Human saliva appears to contain several cysteine proteinase inhibitors that are immunologically related to cystatin S but that differ in their specificity due to amino acid sequence differences. Cystatin SN, with a pI of 7.5, is a much better inhibitor of papain and dipeptidyl peptidase I than is cystatin S, although both inhibit ficin equally well.

Tissue specificity

Expressed in submandibular and sublingual saliva but not in parotid saliva (at protein level).
Expressed in saliva, tears, urine and seminal fluid.

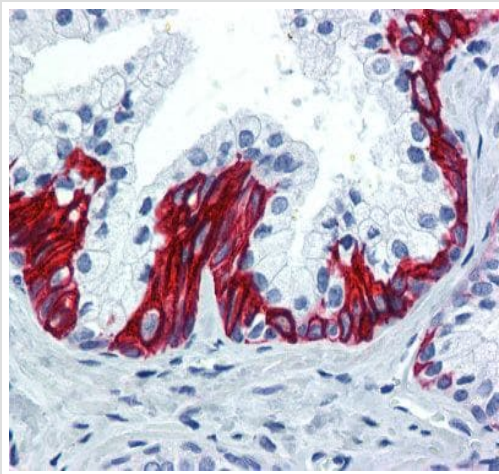
Sequence similarities

Belongs to the cystatin family.

Cellular localization

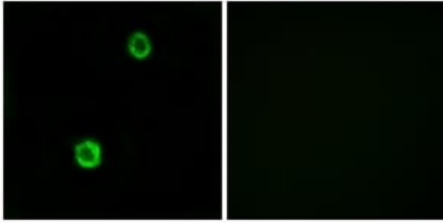
Secreted.

Images



ab124281, at 5µg/ml, staining Cystatin SN/CST1 in formalin-fixed, paraffin-embedded Human prostate tissue.

Immunohistochemistry (Formalin/PFA-fixed paraffin-embedded sections) - Anti-Cystatin SN/CST1 antibody (ab124281)



Immunofluorescence analysis of MCF7 cells, using ab124281 at 1/100 dilution. The picture on the right is treated with the synthesized peptide.

Immunocytochemistry/ Immunofluorescence - Anti-Cystatin SN/CST1 antibody (ab124281)

Please note: All products are "FOR RESEARCH USE ONLY. NOT FOR USE IN DIAGNOSTIC PROCEDURES"

Our Abpromise to you: Quality guaranteed and expert technical support

- Replacement or refund for products not performing as stated on the datasheet
- Valid for 12 months from date of delivery
- Response to your inquiry within 24 hours
- We provide support in Chinese, English, French, German, Japanese and Spanish
- Extensive multi-media technical resources to help you
- We investigate all quality concerns to ensure our products perform to the highest standards

If the product does not perform as described on this datasheet, we will offer a refund or replacement. For full details of the Abpromise, please visit <https://www.abcam.com/abpromise> or contact our technical team.

Terms and conditions

- Guarantee only valid for products bought direct from Abcam or one of our authorized distributors