


Anti-Cytochrome C antibody ab18738

[11 References](#) [2 Images](#)

Overview

Product name	Anti-Cytochrome C antibody
Description	Rabbit polyclonal to Cytochrome C
Host species	Rabbit
Specificity	This antibody detects the 15 kDa cytochrome C.
Tested applications	Suitable for: WB
Species reactivity	Reacts with: Rat, Human Predicted to work with: Chicken 
Immunogen	Synthetic peptide corresponding to Rat Cytochrome C. Corresponding to residues surrounding amino acid 70 of rat Cytochrome C. (Peptide available as ab38265)
Positive control	WB: Jurkat cell lysate and 3T3 cell lysate. Rat kidney cell lysate.
General notes	<p>This product is manufactured by BioVision, an Abcam company and was previously called 3025 Cytochrome c Antibody. 3025-100 is the same size as the 100 µg size of ab18738.</p> <p>The Life Science industry has been in the grips of a reproducibility crisis for a number of years. Abcam is leading the way in addressing this with our range of recombinant monoclonal antibodies and knockout edited cell lines for gold-standard validation. Please check that this product meets your needs before purchasing.</p> <p>If you have any questions, special requirements or concerns, please send us an inquiry and/or contact our Support team ahead of purchase. Recommended alternatives for this product can be found below, along with publications, customer reviews and Q&As</p>

Properties

Form	Liquid
Storage instructions	Shipped at 4°C. Upon delivery aliquot and store at -20°C or -80°C. Avoid repeated freeze / thaw cycles.
Storage buffer	Preservative: 0.03% Proclin 300 Constituents: PBS, 30% Glycerol (glycerin, glycerine), 0.5% BSA, 0.015% EDTA
Purity	Protein A purified
Clonality	Polyclonal

Isotype

IgG

Applications

The Abpromise guarantee

Our **Abpromise guarantee** covers the use of ab18738 in the following tested applications.

The application notes include recommended starting dilutions; optimal dilutions/concentrations should be determined by the end user.

Application	Abreviews	Notes
WB		Use a concentration of 1 - 2 µg/ml. Predicted molecular weight: 12 kDa.

Target

Function

Electron carrier protein. The oxidized form of the cytochrome c heme group can accept an electron from the heme group of the cytochrome c1 subunit of cytochrome reductase. Cytochrome c then transfers this electron to the cytochrome oxidase complex, the final protein carrier in the mitochondrial electron-transport chain.

Plays a role in apoptosis. Suppression of the anti-apoptotic members or activation of the pro-apoptotic members of the Bcl-2 family leads to altered mitochondrial membrane permeability resulting in release of cytochrome c into the cytosol. Binding of cytochrome c to Apaf-1 triggers the activation of caspase-9, which then accelerates apoptosis by activating other caspases.

Involvement in disease

Defects in CYCS are the cause of thrombocytopenia type 4 (THC4) [MIM:612004]; also known as autosomal dominant thrombocytopenia type 4. Thrombocytopenia is the presence of relatively few platelets in blood. THC4 is a non-syndromic form of thrombocytopenia. Clinical manifestations of thrombocytopenia are absent or mild. THC4 may be caused by dysregulated platelet formation.

Sequence similarities

Belongs to the cytochrome c family.

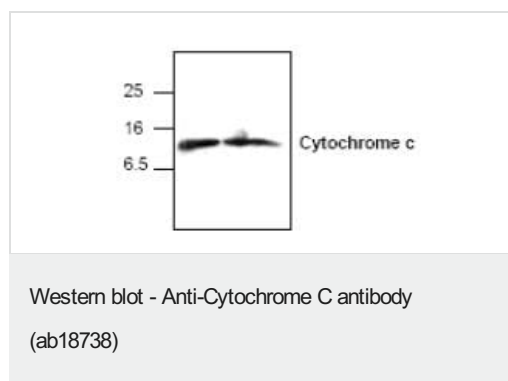
Post-translational modifications

Binds 1 heme group per subunit.

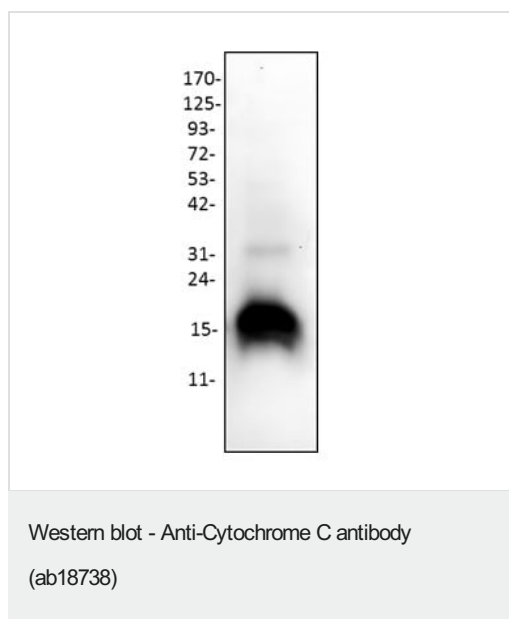
Cellular localization

Mitochondrion matrix.

Images



Western Blot analysis of Left Lane: Jurkat cell lysate and Right Lane: 3T3 cell lysates labeling Cytochrome C with ab18738.



Anti-Cytochrome C antibody (ab18738) + Rat kidney cell lysates

Predicted band size: 12 kDa

Please note: All products are "FOR RESEARCH USE ONLY. NOT FOR USE IN DIAGNOSTIC PROCEDURES"

Our Abpromise to you: Quality guaranteed and expert technical support

- Replacement or refund for products not performing as stated on the datasheet
- Valid for 12 months from date of delivery
- Response to your inquiry within 24 hours
- We provide support in Chinese, English, French, German, Japanese and Spanish
- Extensive multi-media technical resources to help you
- We investigate all quality concerns to ensure our products perform to the highest standards

If the product does not perform as described on this datasheet, we will offer a refund or replacement. For full details of the Abpromise, please visit <https://www.abcam.com/abpromise> or contact our technical team.

Terms and conditions

- Guarantee only valid for products bought direct from Abcam or one of our authorized distributors