

## Product datasheet

# Anti-Cytochrome P450 2B6/CYP2B6 antibody [EPR9985(B)] ab140609

Recombinant RabMAb

★ ★ ★ ★ ★ [1 Abreviews](#) [1 References](#) [3 Images](#)

### Overview

<b>Product name</b>	Anti-Cytochrome P450 2B6/CYP2B6 antibody [EPR9985(B)]
<b>Description</b>	Rabbit monoclonal [EPR9985(B)] to Cytochrome P450 2B6/CYP2B6
<b>Host species</b>	Rabbit
<b>Tested applications</b>	<b>Suitable for:</b> WB <b>Unsuitable for:</b> Flow Cyt, ICC/IF, IHC-P or IP
<b>Species reactivity</b>	<b>Reacts with:</b> Human
<b>Immunogen</b>	Synthetic peptide within Human Cytochrome P450 2B6/CYP2B6 aa 300-400. The exact sequence is proprietary.
<b>Positive control</b>	HepG2 whole cell lysate ( <a href="#">ab7900</a> ) and fetal kidney lysates
<b>General notes</b>	<p>This product is a recombinant monoclonal antibody, which offers several advantages including:</p> <ul style="list-style-type: none"> <li>- High batch-to-batch consistency and reproducibility</li> <li>- Improved sensitivity and specificity</li> <li>- Long-term security of supply</li> <li>- Animal-free production</li> </ul> <p>For more information <a href="#">see here</a>.</p> <p>Our RabMAb® technology is a patented hybridoma-based technology for making rabbit monoclonal antibodies. For details on our patents, please refer to <a href="#">RabMAb® patents</a>.</p> <p>Mouse, Rat: We have preliminary internal testing data to indicate this antibody may not react with these species. Please contact us for more information.</p>

### Properties

<b>Form</b>	Liquid
<b>Storage instructions</b>	Shipped at 4°C. Store at -20°C.
<b>Storage buffer</b>	<p>pH: 7.2</p> <p>Preservative: 0.01% Sodium azide</p> <p>Constituents: 9% PBS, 40% Glycerol (glycerin, glycerine), 0.05% BSA, 50% Tissue culture supernatant</p>

Purity	Protein A purified
Clonality	Monoclonal
Clone number	EPR9985(B)
Isotype	IgG

### Applications

**The Abpromise guarantee** Our **Abpromise guarantee** covers the use of ab140609 in the following tested applications. The application notes include recommended starting dilutions; optimal dilutions/concentrations should be determined by the end user.

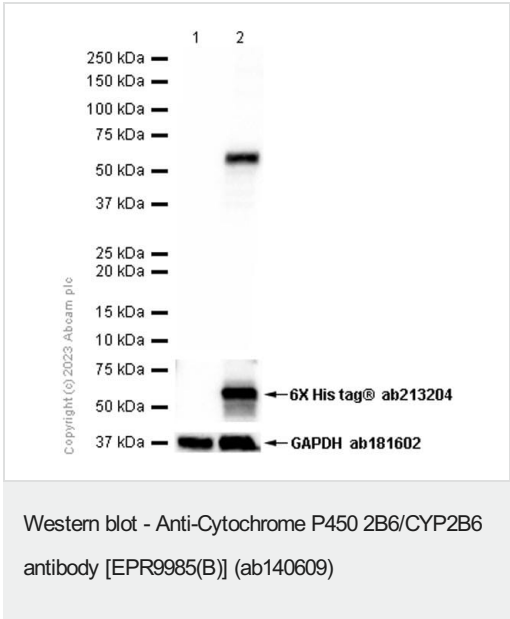
Application	Abreviews	Notes
WB	★ ★ ★ ★ ★ (1)	1/1000 - 1/10000. Detects a band of approximately 56 kDa (predicted molecular weight: 56 kDa).

**Application notes** Is unsuitable for Flow Cyt,ICC/IF ,IHC-P or IP.

### Target

Function	Cytochromes P450 are a group of heme-thiolate monooxygenases. In liver microsomes, this enzyme is involved in an NADPH-dependent electron transport pathway. It oxidizes a variety of structurally unrelated compounds, including steroids, fatty acids, and xenobiotics.
Tissue specificity	Expressed in liver, lung and heart right ventricle.
Sequence similarities	Belongs to the cytochrome P450 family.
Post-translational modifications	Phosphorylation is accompanied by a decrease in enzyme activity.
Cellular localization	Endoplasmic reticulum membrane. Microsome membrane.

### Images



**All lanes** : Anti-Cytochrome P450 2B6/CYP2B6 antibody [EPR9985(B)] (ab140609) at 1/10000 dilution

**Lane 1** : HEK-293T (human epithelial cell from embryonic kidney transformed with large T antigen) transfected with an empty expression vector, whole cell lysate

**Lane 2** : HEK-293T transfected with full length His-tagged Human CYP2B6 expression vector, whole cell lysate

Lysates/proteins at 20 µg per lane.

**Secondary**

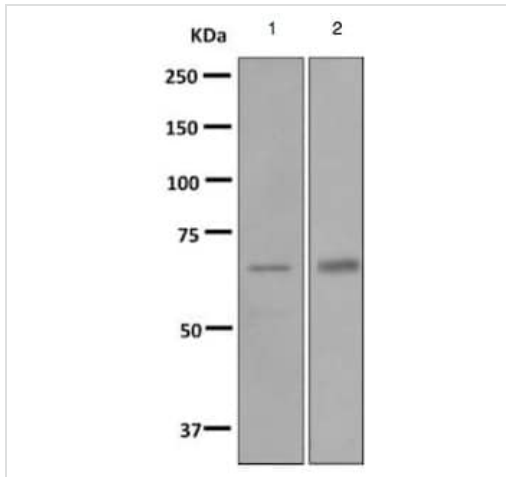
**All lanes** : Goat Anti-Rabbit IgG H&L (HRP) (**ab97051**) at 1/20000 dilution

**Predicted band size:** 56 kDa

**Observed band size:** 55 kDa

**Exposure time:** 3 seconds

Blocking and dilution buffer: 5% NFDM/TBST.



Western blot - Anti-Cytochrome P450 2B6/CYP2B6 antibody [EPR9985(B)] (ab140609)

**All lanes :** Anti-Cytochrome P450 2B6/CYP2B6 antibody [EPR9985(B)] (ab140609) at 1/1000 dilution

**Lane 1 :** HepG2 cell lysate

**Lane 2 :** Fetal kidney lysate

Lysates/proteins at 10 µg per lane.

#### Secondary

**All lanes :** HRP labelled goat anti-rabbit IgG at 1/2000 dilution

**Predicted band size:** 56 kDa

#### Why choose a recombinant antibody?



**Research with confidence**  
Consistent and reproducible results



**Long-term and scalable supply**  
Recombinant technology



**Success from the first experiment**  
Confirmed specificity



**Ethical standards compliant**  
Animal-free production

Anti-Cytochrome P450 2B6/CYP2B6 antibody [EPR9985(B)] (ab140609)

**Please note:** All products are "FOR RESEARCH USE ONLY. NOT FOR USE IN DIAGNOSTIC PROCEDURES"

**Our Abpromise to you: Quality guaranteed and expert technical support**

- Replacement or refund for products not performing as stated on the datasheet
- Valid for 12 months from date of delivery
- Response to your inquiry within 24 hours
- We provide support in Chinese, English, French, German, Japanese and Spanish
- Extensive multi-media technical resources to help you
- We investigate all quality concerns to ensure our products perform to the highest standards

If the product does not perform as described on this datasheet, we will offer a refund or replacement. For full details of the Abpromise, please visit <https://www.abcam.com/abpromise> or contact our technical team.

#### **Terms and conditions**

---

- Guarantee only valid for products bought direct from Abcam or one of our authorized distributors