


Product datasheet

Anti-Cytokeratin 15 antibody [KRT15/2103R] - BSA and Azide free ab236302

Recombinant

[2 Images](#)

Overview

Product name	Anti-Cytokeratin 15 antibody [KRT15/2103R] - BSA and Azide free
Description	Rabbit monoclonal [KRT15/2103R] to Cytokeratin 15 - BSA and Azide free
Host species	Rabbit
Tested applications	Suitable for: IHC-P
Species reactivity	Reacts with: Human Predicted to work with: Rat, Cow 
Immunogen	Recombinant full length protein corresponding to Human Cytokeratin 15. Database link: P19012
Positive control	IHC-P: Human skin tissue.

Properties

Form	Liquid
Storage instructions	Shipped at 4°C. Store at +4°C short term (1-2 weeks). Upon delivery aliquot. Store at -20°C long term. Avoid freeze / thaw cycle.
Storage buffer	pH: 7.2 Constituent: PBS
Carrier free	Yes
Purity	Protein A purified
Clonality	Monoclonal
Clone number	KRT15/2103R
Isotype	IgG

Applications

The Abpromise guarantee Our **Abpromise guarantee** covers the use of ab236302 in the following tested applications. The application notes include recommended starting dilutions; optimal dilutions/concentrations should be determined by the end user.

Application	Abreviews	Notes
IHC-P		Use a concentration of 0.5 - 1 µg/ml. Perform heat mediated antigen retrieval with citrate buffer pH 6 before commencing with IHC staining protocol. (Primary incubation for 10 minutes at room temperature).

Target

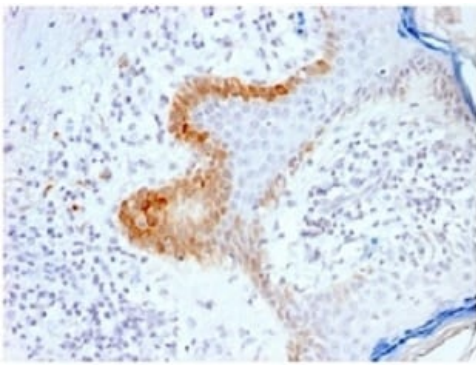
Tissue specificity

Expressed in a discontinuous manner in the basal cell layer of adult skin epidermis, but continuously in the basal layer of fetal skin epidermis and nail. Also expressed in the outer root sheath above the hair bulb in hair follicle (at protein level). Expressed homogeneously in all cell layers of the esophagus and exocervix, but detected in the basal cell layer only of oral mucosa, skin and in the basal plus the next two layers of the suprabasal epithelium of the palate.

Sequence similarities

Belongs to the intermediate filament family.

Images



Formalin-fixed, paraffin-embedded human skin tissue stained for Cytokeratin 15 using [ab234322](#) at 1 µg/ml in immunohistochemical analysis.

This data was developed using the same antibody clone in a different buffer formulation containing PBS, BSA, glycerol, and sodium azide ([ab234322](#)).

Immunohistochemistry (Formalin/PFA-fixed paraffin-embedded sections) - Anti-Cytokeratin 15 antibody [KRT15/2103R] - BSA and Azide free ([ab236302](#))

Why choose a recombinant antibody?



Research with confidence
Consistent and reproducible results



Long-term and scalable supply
Recombinant technology



Success from the first experiment
Confirmed specificity



Ethical standards compliant
Animal-free production

Anti-Cytokeratin 15 antibody [KRT15/2103R] - BSA and Azide free (ab236302)

Please note: All products are "FOR RESEARCH USE ONLY. NOT FOR USE IN DIAGNOSTIC PROCEDURES"

Our Abpromise to you: Quality guaranteed and expert technical support

- Replacement or refund for products not performing as stated on the datasheet
- Valid for 12 months from date of delivery
- Response to your inquiry within 24 hours
- We provide support in Chinese, English, French, German, Japanese and Spanish
- Extensive multi-media technical resources to help you
- We investigate all quality concerns to ensure our products perform to the highest standards

If the product does not perform as described on this datasheet, we will offer a refund or replacement. For full details of the Abpromise, please visit <https://www.abcam.com/abpromise> or contact our technical team.

Terms and conditions

- Guarantee only valid for products bought direct from Abcam or one of our authorized distributors