

Anti-Cytokeratin 16/K16 antibody [EPR13504] ab181055

Recombinant RabMAb

5 Images

Overview

Product name	Anti-Cytokeratin 16/K16 antibody [EPR13504]
Description	Rabbit monoclonal [EPR13504] to Cytokeratin 16/K16
Host species	Rabbit
Tested applications	Suitable for: WB, IHC-P
Species reactivity	Reacts with: Human
Immunogen	Recombinant fragment. This information is proprietary to Abcam and/or its suppliers.
Positive control	HeLa and Human skin lysates; Human skin and tonsil tissues.
General notes	<p>This product is a recombinant monoclonal antibody, which offers several advantages including:</p> <ul style="list-style-type: none"> - High batch-to-batch consistency and reproducibility - Improved sensitivity and specificity - Long-term security of supply - Animal-free production <p>For more information see here.</p> <p>Our RabMAb® technology is a patented hybridoma-based technology for making rabbit monoclonal antibodies. For details on our patents, please refer to RabMAb® patents.</p>

Properties

Form	Liquid
Storage instructions	Shipped at 4°C. Store at +4°C short term (1-2 weeks). Upon delivery aliquot. Store at -20°C long term. Avoid freeze / thaw cycle.
Storage buffer	<p>Preservative: 0.01% Sodium azide</p> <p>Constituents: 40% Glycerol (glycerin, glycerine), 59% PBS, 0.05% BSA</p>
Purity	Tissue culture supernatant
Clonality	Monoclonal
Clone number	EPR13504
Isotype	IgG

Applications

Applications

The Abpromise guarantee

Our **Abpromise guarantee** covers the use of ab181055 in the following tested applications.

The application notes include recommended starting dilutions; optimal dilutions/concentrations should be determined by the end user.

Application	Abreviews	Notes
WB		1/10000 - 1/100000. Detects a band of approximately 48 kDa (predicted molecular weight: 51 kDa).
IHC-P		1/250 - 1/500. Perform heat mediated antigen retrieval with Tris/EDTA buffer pH 9.0 before commencing with IHC staining protocol.

Target

Tissue specificity

Expressed in the hair follicle, nail bed and in mucosal stratified squamous epithelia and, suprabasally, in oral epithelium and palmoplantar epidermis. Also found in luminal cells of sweat and mammary gland ducts.

Involvement in disease

Defects in KRT16 are a cause of pachyonychia congenita type 1 (PC1) [MIM:167200]; also known as Jadassohn-Lewandowsky syndrome. PC1 is an autosomal dominant ectodermal dysplasia characterized by hypertrophic nail dystrophy resulting in onychogryposis (thickening and increase in curvature of the nail), palmoplantar keratoderma, follicular hyperkeratosis, and oral leukokeratosis. Hyperhidrosis of the hands and feet is usually present.

Defects in KRT16 are the cause of palmoplantar keratoderma non-epidermolytic focal (FNEPPK) [MIM:613000]. A dermatological disorder characterized by non-epidermolytic palmoplantar keratoderma limited to the pressure points on the balls of the feet, with later mild involvement on the palms. Oral, genital and follicular keratotic lesions are often present.

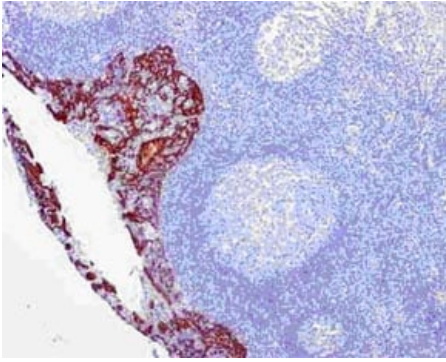
Defects in KRT16 are a cause of unilateral palmoplantar verrucous nevus (UPVN) [MIM:144200]. UPVN is characterized by a localized thickening of the skin in parts of the right palm and the right sole.

Note=KRT16 and KRT17 are coexpressed only in pathological situations such as metaplasias and carcinomas of the uterine cervix and in psoriasis vulgaris.

Sequence similarities

Belongs to the intermediate filament family.

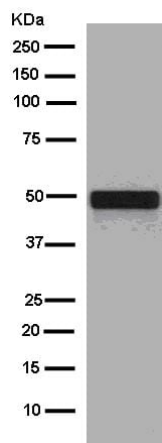
Images



Immunohistochemistry (Formalin/PFA-fixed paraffin-embedded sections) - Anti-Cytokeratin 16/K16 antibody [EPR13504] (ab181055)

Immunohistochemical analysis of paraffin-embedded Human tonsil tissue labeling Cytokeratin 16/K16 with ab181055 at 1/500 dilution followed by pre-diluted HRP-conjugated secondary antibody and counter-stained with Hematoxylin.

Perform heat mediated antigen retrieval with EDTA buffer pH 9 before commencing with IHC staining protocol.



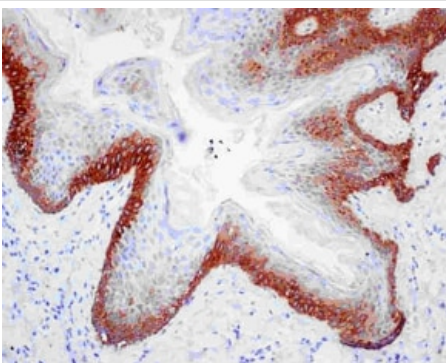
Western blot - Anti-Cytokeratin 16/K16 antibody [EPR13504] (ab181055)

Anti-Cytokeratin 16/K16 antibody [EPR13504] (ab181055) at 1/100000 dilution + Human skin lysate at 10 µg

Secondary

Goat Anti-Rabbit IgG H&L (HRP) ([ab136636](#)) at 1/500 dilution

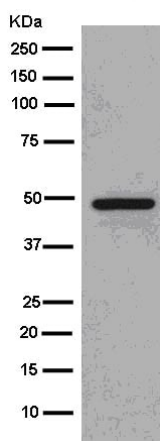
Predicted band size: 51 kDa



Immunohistochemistry (Formalin/PFA-fixed paraffin-embedded sections) - Anti-Cytokeratin 16/K16 antibody [EPR13504] (ab181055)

Immunohistochemical analysis of paraffin-embedded Human skin tissue labeling Cytokeratin 16/K16 with ab181055 at 1/500 dilution followed by pre-diluted HRP-conjugated secondary antibody and counter-stained with Hematoxylin.

Perform heat mediated antigen retrieval with EDTA buffer pH 9 before commencing with IHC staining protocol.



Western blot - Anti-Cytokeratin 16/K16 antibody [EPR13504] (ab181055)

Anti-Cytokeratin 16/K16 antibody [EPR13504] (ab181055) at 1/100000 dilution + HeLa cell lysate at 20 µg

Secondary

Goat Anti-Rabbit IgG, (H+L) HRP at 1/1000 dilution

Predicted band size: 51 kDa

Why choose a recombinant antibody?



Research with confidence
Consistent and reproducible results



Long-term and scalable supply
Recombinant technology



Success from the first experiment
Confirmed specificity



Ethical standards compliant
Animal-free production

Anti-Cytokeratin 16/K16 antibody [EPR13504] (ab181055)

Please note: All products are "FOR RESEARCH USE ONLY. NOT FOR USE IN DIAGNOSTIC PROCEDURES"

Our Abpromise to you: Quality guaranteed and expert technical support

- Replacement or refund for products not performing as stated on the datasheet
- Valid for 12 months from date of delivery
- Response to your inquiry within 24 hours
- We provide support in Chinese, English, French, German, Japanese and Spanish
- Extensive multi-media technical resources to help you
- We investigate all quality concerns to ensure our products perform to the highest standards

If the product does not perform as described on this datasheet, we will offer a refund or replacement. For full details of the Abpromise, please visit <https://www.abcam.com/abpromise> or contact our technical team.

Terms and conditions

- Guarantee only valid for products bought direct from Abcam or one of our authorized distributors