

Anti-Cytokeratin 19 antibody [KRT19/800] ab220193

★★★★★ [2 Abreviews](#) [1 References](#) [10 Images](#)

Overview

Product name	Anti-Cytokeratin 19 antibody [KRT19/800]
Description	Mouse monoclonal [KRT19/800] to Cytokeratin 19
Host species	Mouse
Tested applications	Suitable for: IHC-P, WB, ICC
Species reactivity	Reacts with: Rat, Human
Immunogen	Recombinant full length protein corresponding to Human Cytokeratin 19. Database link: P08727
Positive control	IHC-P: Human ovarian carcinoma, endometrial carcinoma, cervical carcinoma, bladder carcinoma, and pancreas tissues; rat stomach, colon and lung tissues; ICC: MCF7 cells; WB: Human lung lysate.
General notes	<p>The Life Science industry has been in the grips of a reproducibility crisis for a number of years. Abcam is leading the way in addressing this with our range of recombinant monoclonal antibodies and knockout edited cell lines for gold-standard validation. Please check that this product meets your needs before purchasing.</p> <p>If you have any questions, special requirements or concerns, please send us an inquiry and/or contact our Support team ahead of purchase. Recommended alternatives for this product can be found below, along with publications, customer reviews and Q&As</p>

Properties

Form	Liquid
Storage instructions	Shipped at 4°C. Store at +4°C short term (1-2 weeks). Upon delivery aliquot. Store at -20°C long term. Avoid freeze / thaw cycle.
Storage buffer	pH: 7.2 Preservative: 0.05% Sodium azide Constituents: 0.05% BSA, 99% PBS
Purity	Protein A/G purified
Purification notes	ab220193 was purified from Bioreactor Concentrate by Protein A/G.
Clonality	Monoclonal
Clone number	KRT19/800

Isotype	IgG1
Light chain type	kappa

Applications

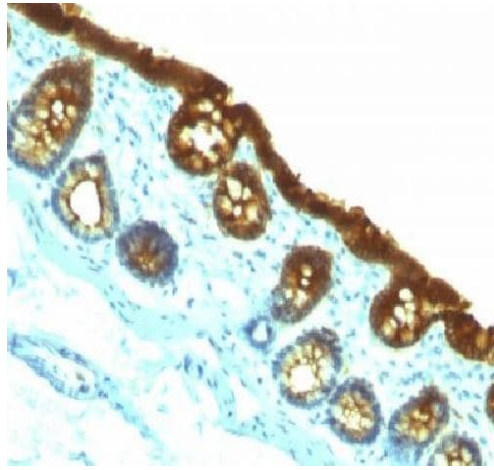
The Abpromise guarantee Our **Abpromise guarantee** covers the use of ab220193 in the following tested applications. The application notes include recommended starting dilutions; optimal dilutions/concentrations should be determined by the end user.

Application	Abreviews	Notes
IHC-P		Use a concentration of 1 - 2 µg/ml. Primary incubation for 30 minutes at room temperature. Staining of formalin-fixed tissues requires heating tissue sections in 10mM Tris with 1mM EDTA, pH 9.0, for 45 min at 95°C followed by cooling at room temperature for 20 minutes.
WB	★★★★★ (1)	Use a concentration of 1 - 2 µg/ml. Predicted molecular weight: 44 kDa.
ICC		Use a concentration of 1 - 2 µg/ml.

Target

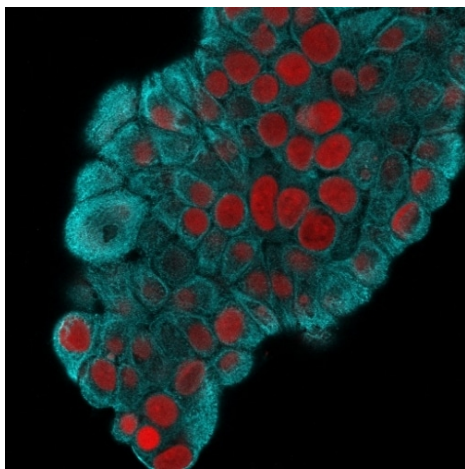
Function	Involved in the organization of myofibers. Together with KRT8, helps to link the contractile apparatus to dystrophin at the costameres of striated muscle.
Tissue specificity	Expressed in a defined zone of basal keratinocytes in the deep outer root sheath of hair follicles. Also observed in sweat gland and mammary gland ductal and secretory cells, bile ducts, gastrointestinal tract, bladder urothelium, oral epithelia, esophagus, ectocervical epithelium (at protein level). Expressed in epidermal basal cells, in nipple epidermis and a defined region of the hair follicle. Also seen in a subset of vascular wall cells in both the veins and artery of human umbilical cord, and in umbilical cord vascular smooth muscle. Observed in muscle fibers accumulating in the costameres of myoplasm at the sarcolemma in structures that contain dystrophin and spectrin.
Sequence similarities	Belongs to the intermediate filament family.
Developmental stage	Present in hair follicles at all stages of development.
Domain	This keratin differs from all other IF proteins in lacking the C-terminal tail domain.

Images



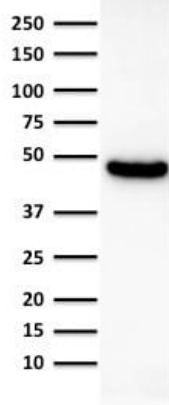
Immunohistochemical analysis of formalin-fixed and paraffin-embedded rat colon tissue labeling Cytokeratin 19 with ab220193 at 1 µg/ml dilution.

Immunohistochemistry (Formalin/PFA-fixed paraffin-embedded sections) - Anti-Cytokeratin 19 antibody [KRT19/800] (ab220193)



Immunocytochemistry analysis of MeOH fixed MCF7 (human breast adenocarcinoma cell line) cells labeling CK19 using ab220193 followed by Goat anti-mouse IgG-CF488 (Cyan). The nuclear counterstain is Reddot (Red).

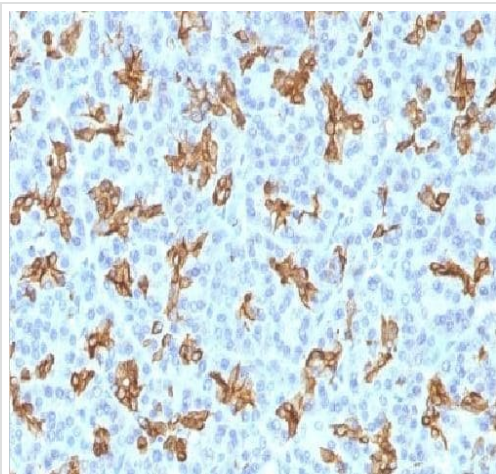
Immunocytochemistry - Anti-Cytokeratin 19 antibody [KRT19/800] (ab220193)



Western blot - Anti-Cytokeratin 19 antibody
[KRT19/800] (ab220193)

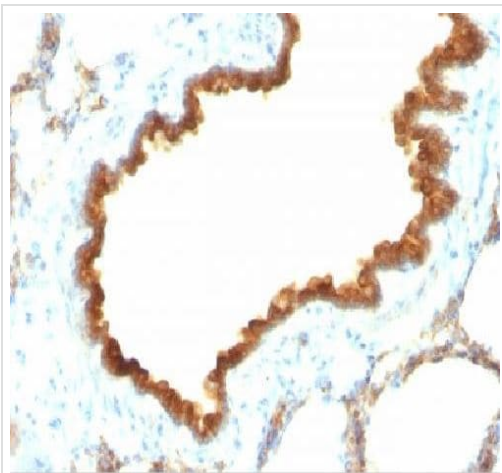
Anti-Cytokeratin 19 antibody [KRT19/800] (ab220193) + Human lung lysate

Predicted band size: 44 kDa



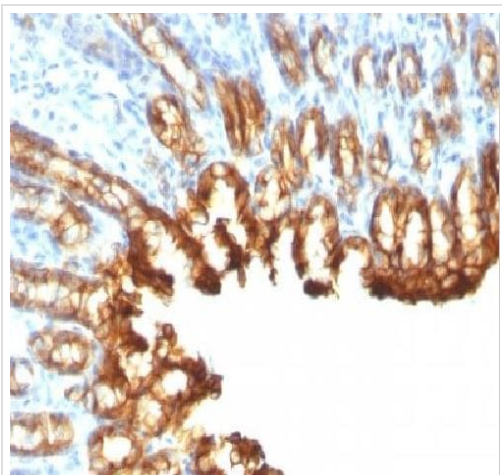
Immunohistochemistry (Formalin/PFA-fixed paraffin-embedded sections) - Anti-Cytokeratin 19 antibody
[KRT19/800] (ab220193)

Immunohistochemical analysis of formalin-fixed and paraffin-embedded Human pancreas tissue labeling Cytokeratin 19 with ab220193 at 1 µg/ml dilution.



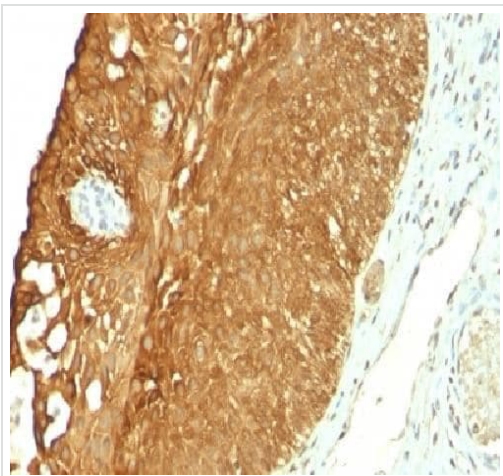
Immunohistochemical analysis of formalin-fixed and paraffin-embedded rat lung tissue labeling Cytokeratin 19 with ab220193 at 1 µg/ml dilution.

Immunohistochemistry (Formalin/PFA-fixed paraffin-embedded sections) - Anti-Cytokeratin 19 antibody [KRT19/800] (ab220193)



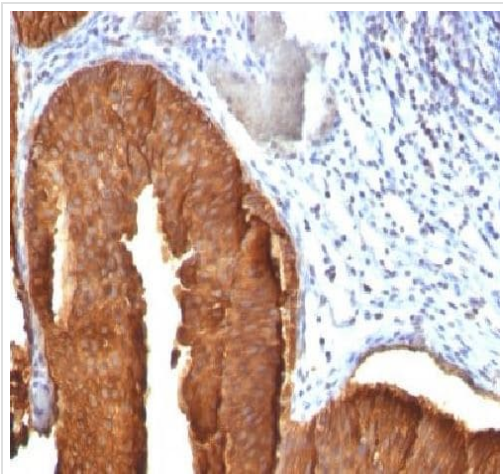
Immunohistochemical analysis of formalin-fixed and paraffin-embedded rat stomach tissue labeling Cytokeratin 19 with ab220193 at 1 µg/ml dilution.

Immunohistochemistry (Formalin/PFA-fixed paraffin-embedded sections) - Anti-Cytokeratin 19 antibody [KRT19/800] (ab220193)



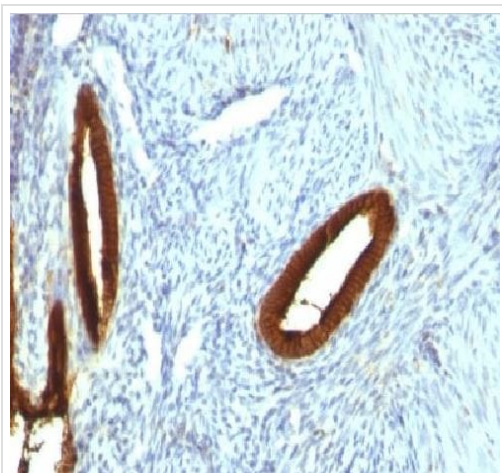
Immunohistochemical analysis of formalin-fixed and paraffin-embedded Human cervical carcinoma tissue labeling Cytokeratin 19 with ab220193 at 1 µg/ml dilution.

Immunohistochemistry (Formalin/PFA-fixed paraffin-embedded sections) - Anti-Cytokeratin 19 antibody [KRT19/800] (ab220193)



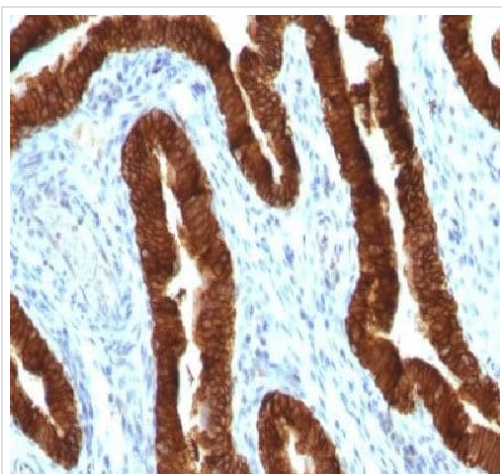
Immunohistochemical analysis of formalin-fixed and paraffin-embedded Human bladder carcinoma tissue labeling Cytokeratin 19 with ab220193 at 1 µg/ml dilution.

Immunohistochemistry (Formalin/PFA-fixed paraffin-embedded sections) - Anti-Cytokeratin 19 antibody [KRT19/800] (ab220193)



Immunohistochemical analysis of formalin-fixed and paraffin-embedded Human endometrial carcinoma tissue labeling Cytokeratin 19 with ab220193 at 1 µg/ml dilution.

Immunohistochemistry (Formalin/PFA-fixed paraffin-embedded sections) - Anti-Cytokeratin 19 antibody [KRT19/800] (ab220193)



Immunohistochemical analysis of formalin-fixed and paraffin-embedded Human ovarian carcinoma tissue labeling Cytokeratin 19 with ab220193 at 1 µg/ml dilution.

Immunohistochemistry (Formalin/PFA-fixed paraffin-embedded sections) - Anti-Cytokeratin 19 antibody [KRT19/800] (ab220193)

Please note: All products are "FOR RESEARCH USE ONLY. NOT FOR USE IN DIAGNOSTIC PROCEDURES"

Our Abpromise to you: Quality guaranteed and expert technical support

- Replacement or refund for products not performing as stated on the datasheet

- Valid for 12 months from date of delivery
- Response to your inquiry within 24 hours
- We provide support in Chinese, English, French, German, Japanese and Spanish
- Extensive multi-media technical resources to help you
- We investigate all quality concerns to ensure our products perform to the highest standards

If the product does not perform as described on this datasheet, we will offer a refund or replacement. For full details of the Abpromise, please visit <https://www.abcam.com/abpromise> or contact our technical team.

Terms and conditions

- Guarantee only valid for products bought direct from Abcam or one of our authorized distributors