

## Product datasheet

### Anti-Cytokeratin 5 + 6 antibody [D5/16 B4] ab17133

★★★★★ [2 Abreviews](#) [12 References](#) [1 Image](#)

#### Overview

<b>Product name</b>	Anti-Cytokeratin 5 + 6 antibody [D5/16 B4]
<b>Description</b>	Mouse monoclonal [D5/16 B4] to Cytokeratin 5 + 6
<b>Host species</b>	Mouse
<b>Tested applications</b>	<b>Suitable for:</b> IHC-P
<b>Species reactivity</b>	<b>Reacts with:</b> Human
<b>Immunogen</b>	Full length native protein (purified) corresponding to Human Cytokeratin 5 + 6.
<b>Positive control</b>	IHC-P: Human tonsil tissue.
<b>General notes</b>	<p>The Life Science industry has been in the grips of a reproducibility crisis for a number of years. Abcam is leading the way in addressing this with our range of recombinant monoclonal antibodies and knockout edited cell lines for gold-standard validation. Please check that this product meets your needs before purchasing.</p> <p>If you have any questions, special requirements or concerns, please send us an inquiry and/or contact our Support team ahead of purchase. Recommended alternatives for this product can be found below, along with publications, customer reviews and Q&amp;As</p>

#### Properties

<b>Form</b>	Liquid
<b>Storage instructions</b>	Shipped at 4°C. Store at +4°C short term (1-2 weeks). Store at -20°C or -80°C. Avoid freeze / thaw cycle.
<b>Storage buffer</b>	<p>pH: 7.3</p> <p>Preservative: 0.05% Sodium azide</p> <p>Constituent: 1% BSA</p>
<b>Purity</b>	Protein G purified
<b>Clonality</b>	Monoclonal
<b>Clone number</b>	D5/16 B4
<b>Isotype</b>	IgG1
<b>Light chain type</b>	kappa

#### Applications

## Applications

### The Abpromise guarantee

Our **Abpromise guarantee** covers the use of ab17133 in the following tested applications.

The application notes include recommended starting dilutions; optimal dilutions/concentrations should be determined by the end user.

Application	Abreviews	Notes
IHC-P	★★★★★ (2)	1/25 - 1/50. Pretreat tissue with citrate buffer pH 6. Incubate with primary antibody for 30 minutes at room temperature.

## Target

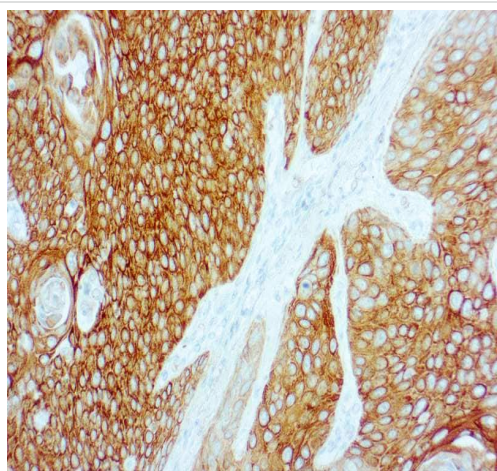
### Relevance

Cytokeratin 5 (58 kD) is a high molecular weight, basic type of cytokeratin expressed in basal, the intermediate and the superficial cell layers of stratified epithelia as well as transitional epithelia, complex epithelia and in mesothelial cells and mesothelioma. Cytokeratin 6 (56 kD) is also a high molecular weight, basic type cytokeratin expressed by proliferating squamous epithelium often paired with Cytokeratin 16.

### Cellular localization

Cytoplasmic

## Images



Immunohistochemistry (Formalin/PFA-fixed paraffin-embedded sections) analysis of Human tonsil tissue labeling Cytokeratin 5 + 6 with ab17133.

Immunohistochemistry (Formalin/PFA-fixed paraffin-embedded sections) - Anti-Cytokeratin 5 + 6 antibody [D5/16 B4] (ab17133)

**Please note:** All products are "FOR RESEARCH USE ONLY. NOT FOR USE IN DIAGNOSTIC PROCEDURES"

## Our Abpromise to you: Quality guaranteed and expert technical support

- Replacement or refund for products not performing as stated on the datasheet
- Valid for 12 months from date of delivery
- Response to your inquiry within 24 hours

- We provide support in Chinese, English, French, German, Japanese and Spanish
- Extensive multi-media technical resources to help you
- We investigate all quality concerns to ensure our products perform to the highest standards

If the product does not perform as described on this datasheet, we will offer a refund or replacement. For full details of the Abpromise, please visit <https://www.abcam.com/abpromise> or contact our technical team.

#### **Terms and conditions**

---

- Guarantee only valid for products bought direct from Abcam or one of our authorized distributors