

Product datasheet

Anti-Cytokeratin 6 antibody [EPR1602Y] ab93279

Recombinant RabMAb

[8 References](#) [10 Images](#)

Overview

Product name	Anti-Cytokeratin 6 antibody [EPR1602Y]
Description	Rabbit monoclonal [EPR1602Y] to Cytokeratin 6
Host species	Rabbit
Tested applications	Suitable for: IHC-P, WB, ICC/IF Unsuitable for: Flow Cyt or IP
Species reactivity	Reacts with: Human
Immunogen	Synthetic peptide within Human Cytokeratin 6 aa 1-100 (N terminal). The exact sequence is proprietary. P48668, P04259 and P02538 100% homology.
Positive control	WB: HaCaT and A431 cell lysates, human skin and tonsil tissue lysates. IHC-P: Human tonsil and squamous cervical carcinoma tissues. Human normal skin tissue. ICC/IF: A431 cells.
General notes	<p>This product is a recombinant monoclonal antibody, which offers several advantages including:</p> <ul style="list-style-type: none"> - High batch-to-batch consistency and reproducibility - Improved sensitivity and specificity - Long-term security of supply - Animal-free production <p>For more information see here.</p> <p>Our RabMAb[®] technology is a patented hybridoma-based technology for making rabbit monoclonal antibodies. For details on our patents, please refer to RabMAb[®] patents.</p> <p>Mouse, Rat: We have preliminary internal testing data to indicate this antibody may not react with these species. Please contact us for more information.</p>

Properties

Form	Liquid
Storage instructions	Shipped at 4°C. Store at +4°C short term (1-2 weeks). Upon delivery aliquot. Store at -20°C. Stable for 12 months at -20°C.
Storage buffer	pH: 7.20 Preservative: 0.01% Sodium azide Constituents: 59% PBS, 40% Glycerol (glycerin, glycerine), 0.05% BSA
Purity	Protein A purified

Clonality	Monoclonal
Clone number	EPR1602Y
Isotype	IgG

Applications

The Abpromise guarantee Our **Abpromise guarantee** covers the use of ab93279 in the following tested applications.

The application notes include recommended starting dilutions; optimal dilutions/concentrations should be determined by the end user.

Application	Abreviews	Notes
IHC-P		1/50. Perform heat mediated antigen retrieval before commencing with IHC staining protocol. See IHC antigen retrieval protocols .
WB		1/2000. Predicted molecular weight: 60 kDa.
ICC/IF		1/50.

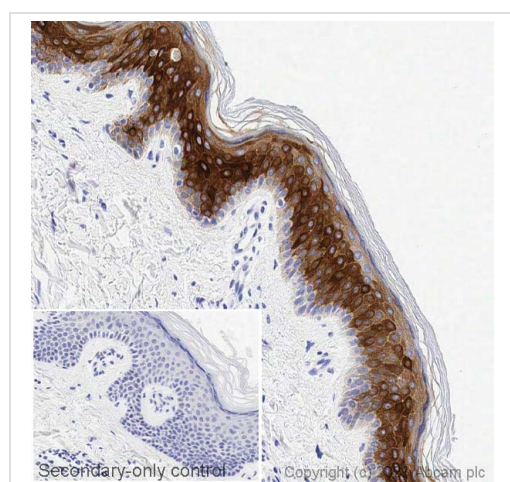
Application notes Is unsuitable for Flow Cyt or IP.

Target

Tissue specificity Constitutively expressed in distinct types of epithelia such as those in oral mucosa, esophagus, papillae of tongue and hair follicle outer root sheath.

Sequence similarities Belongs to the intermediate filament family.

Images

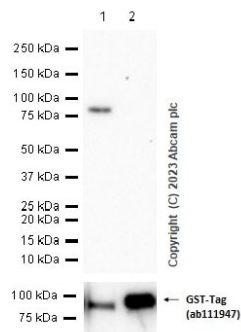


Immunohistochemistry (Formalin/PFA-fixed paraffin-embedded sections) - Anti-Cytokeratin 6 antibody [EPR1602Y] (ab93279)

IHC image of Cytokeratin 6 staining in a section of formalin-fixed paraffin-embedded normal human skin* performed on a Leica Biosystems BOND® RX instrument. The section was pre-treated using heat mediated antigen retrieval with sodium citrate buffer (pH6, epitope retrieval solution 1) for 20mins. The section was then incubated with ab93279, 0.5ug/ml, for 15 mins at room temperature and detected using an HRP conjugated compact polymer system. DAB was used as the chromogen. The section was then counterstained with haematoxylin and mounted with DPX. The inset secondary-only control image is taken from an identical assay without primary antibody.

For other IHC staining systems (automated and non-automated) customers should optimize variable parameters such as antigen retrieval conditions, primary antibody concentration and antibody incubation times.

**Tissue obtained from the Human Research Tissue Bank,*



Western blot - Anti-Cytokeratin 6 antibody
[EPR1602Y] (ab93279)

All lanes : Anti-Cytokeratin 6 antibody [EPR1602Y] (ab93279) at 1/1000 dilution

Lane 1 : N-GST tagged full-length recombinant human Cytokeratin 6A protein, 10 ng

Lane 2 : N-GST tagged full-length recombinant human Cytokeratin 5 protein, 10 ng

Secondary

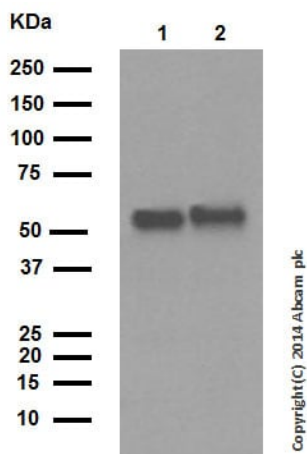
All lanes : Goat Anti-Rabbit IgG H&L (HRP) (**ab97051**) at 1/20000 dilution

Predicted band size: 60 kDa

Observed band size: 87 kDa

Exposure time: 180 seconds

Blocking buffer: 5% NFDM /TBST.



Western blot - Anti-Cytokeratin 6 antibody
[EPR1602Y] (ab93279)

All lanes : Anti-Cytokeratin 6 antibody [EPR1602Y] (ab93279) at 1/2000 dilution (purified)

Lane 1 : Human skin tissue lysate

Lane 2 : Human tonsil tissue lysate

Lysates/proteins at 20 µg per lane.

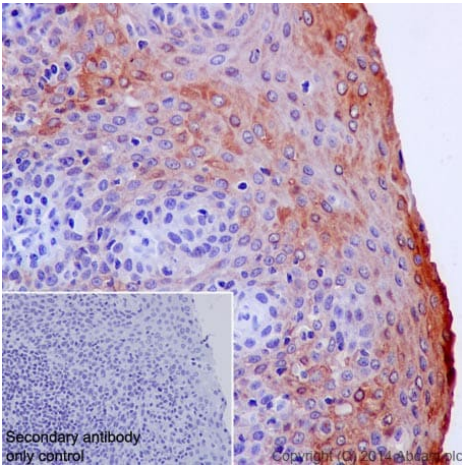
Secondary

All lanes : Peroxidase conjugated goat anti-rabbit IgG (H+L) at 1/1000 dilution

Predicted band size: 60 kDa

Observed band size: 56 kDa

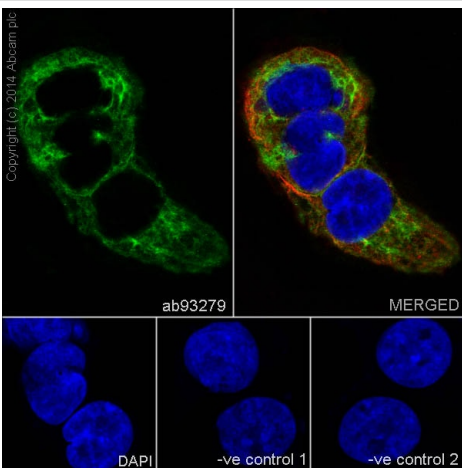
Blocking and dilution buffer: 5% NFDM/TBST.



Immunohistochemistry (Formalin/PFA-fixed paraffin-embedded sections) - Anti-Cytokeratin 6 antibody [EPR1602Y] (ab93279)

Immunohistochemistry (Formalin/PFA-fixed paraffin-embedded sections) analysis of human tonsil tissue labelling Cytokeratin 6 with purified ab93279 at 1/50. Heat mediated antigen retrieval was performed using Tris/EDTA buffer pH 9. **ab97051**, a HRP-conjugated goat anti-rabbit IgG (H+L) was used as the secondary antibody (1/500).

Negative control using PBS instead of primary antibody. Counterstained with hematoxylin.

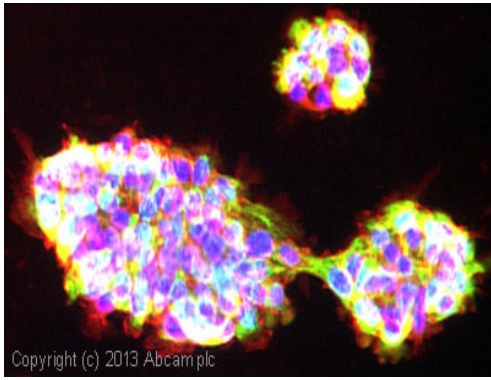


Immunocytochemistry/ Immunofluorescence - Anti-Cytokeratin 6 antibody [EPR1602Y] (ab93279)

Immunocytochemistry/Immunofluorescence analysis of A431 (Human epidermoid carcinoma cell line) cells labelling Cytokeratin 6 with purified ab93279 at 1/50. Cells were fixed with 4% paraformaldehyde and permeabilized with 0.1% Triton X-100. **ab150077**, an Alexa Fluor® 488-conjugated goat anti-rabbit IgG (1/500) was used as the secondary antibody. DAPI (blue) was used as the nuclear counterstain. **ab7291**, a mouse anti-tubulin (1/500) and **ab150120**, an Alexa Fluor® 594-conjugated goat anti-mouse IgG (1/500) were also used.

Control 1: Primary antibody (1/100) and secondary antibody, **ab150120**, an Alexa Fluor® 594-conjugated goat anti-mouse IgG (1/500).

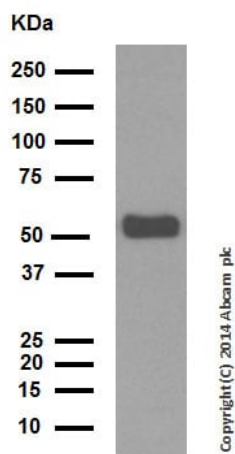
Control 2: **ab7291** (1/1000) and secondary antibody, **ab150077**, an Alexa Fluor® 488-conjugated goat anti-rabbit IgG (1/500).



Immunocytochemistry/ Immunofluorescence - Anti-Cytokeratin 6 antibody [EPR1602Y] (ab93279)

ICC/IF image of unpurified ab93279 stained A431 (Human epidermoid carcinoma cell line) cells.

The cells were 100% methanol fixed (5 min) and then incubated in 1%BSA / 10% normal goat serum / 0.3M glycine in 0.1% PBS-Tween for 1h to permeabilize the cells and block non-specific protein-protein interactions. The cells were then incubated with the antibody (ab93279, 1/100 dilution) overnight at +4°C. The secondary antibody (green) was **ab96899**, DyLight® 488 goat anti-rabbit IgG (H+L) used at a 1/250 dilution for 1h. Alexa Fluor® 594 WGA was used to label plasma membranes (red) at a 1/200 dilution for 1h. DAPI was used to stain the cell nuclei (blue) at a concentration of 1.43µM.



Western blot - Anti-Cytokeratin 6 antibody [EPR1602Y] (ab93279)

Anti-Cytokeratin 6 antibody [EPR1602Y] (ab93279) at 1/10000 dilution (purified) + HaCaT (Human keratinocyte cell line) cell lysate at 20 µg

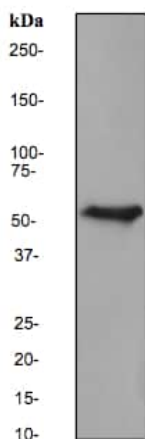
Secondary

Peroxidase conjugated goat anti-rabbit IgG (H+L) at 1/1000 dilution

Predicted band size: 60 kDa

Observed band size: 56 kDa

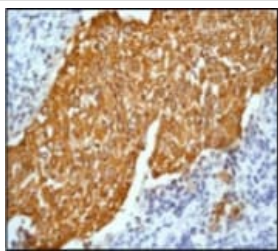
Blocking and dilution buffer: 5% NFDM/TBST.



Western blot - Anti-Cytokeratin 6 antibody [EPR1602Y] (ab93279)

Anti-Cytokeratin 6 antibody [EPR1602Y] (ab93279) at 1/5000 dilution (unpurified) + A431 (Human epidermoid carcinoma cell line) cell lysate at 10 µg

Predicted band size: 60 kDa



Immunohistochemistry (Formalin/PFA-fixed paraffin-embedded sections) - Anti-Cytokeratin 6 antibody [EPR1602Y] (ab93279)

Immunohistochemistry (Formalin/PFA-fixed paraffin-embedded sections) analysis of human squamous cervical carcinoma tissue labelling Cytokeratin 6 with unpurified ab93279 at a dilution of 1/250.

Perform heat mediated antigen retrieval before commencing with IHC staining protocol.

Why choose a recombinant antibody?



Research with confidence
Consistent and reproducible results



Long-term and scalable supply
Recombinant technology



Success from the first experiment
Confirmed specificity



Ethical standards compliant
Animal-free production

Anti-Cytokeratin 6 antibody [EPR1602Y] (ab93279)

Please note: All products are "FOR RESEARCH USE ONLY. NOT FOR USE IN DIAGNOSTIC PROCEDURES"

Our Abpromise to you: Quality guaranteed and expert technical support

- Replacement or refund for products not performing as stated on the datasheet
- Valid for 12 months from date of delivery
- Response to your inquiry within 24 hours
- We provide support in Chinese, English, French, German, Japanese and Spanish
- Extensive multi-media technical resources to help you
- We investigate all quality concerns to ensure our products perform to the highest standards

If the product does not perform as described on this datasheet, we will offer a refund or replacement. For full details of the Abpromise, please visit <https://www.abcam.com/abpromise> or contact our technical team.

Terms and conditions

- Guarantee only valid for products bought direct from Abcam or one of our authorized distributors