

## Product datasheet

# Anti-Cytokeratin 6 antibody [EPR1603Y] ab52620

Recombinant RabMAb

[2 References](#) [7 Images](#)

### Overview

|                            |  |
|----------------------------|--|
| <b>Product name</b>        | Anti-Cytokeratin 6 antibody [EPR1603Y]   |
| <b>Description</b>         | Rabbit monoclonal [EPR1603Y] to Cytokeratin 6  |
| <b>Host species</b>        | Rabbit   |
| <b>Tested applications</b> | <b>Suitable for:</b> WB, IHC-P, ICC/IF<br><b>Unsuitable for:</b> Flow Cyt or IP  |
| <b>Species reactivity</b>  | <b>Reacts with:</b> Human  |
| <b>Immunogen</b>           | Synthetic peptide corresponding to Human Cytokeratin 6 aa 550-650 (C terminal). P48668, P02538 and P04259.<br>Database link: <a href="#">P48668</a>  |
| <b>Positive control</b>    | A431 cell lysate, human squamous cervical carcinoma, A431 cells. IHC-P: human normal skin tissue.  |
| <b>General notes</b>       | <p>This product is a recombinant monoclonal antibody, which offers several advantages including:</p> <ul style="list-style-type: none"> <li>- High batch-to-batch consistency and reproducibility</li> <li>- Improved sensitivity and specificity</li> <li>- Long-term security of supply</li> <li>- Animal-free production</li> </ul> <p>For more information <a href="#">see here</a>.</p> <p>Our RabMAb<sup>®</sup> technology is a patented hybridoma-based technology for making rabbit monoclonal antibodies. For details on our patents, please refer to <a href="#">RabMAb<sup>®</sup> patents</a>.</p> <p>Mouse, Rat: We have preliminary internal testing data to indicate this antibody may not react with these species. Please contact us for more information.</p> |

### Properties

|                             |  |
|-----------------------------|--|
| <b>Form</b>                 | Liquid   |
| <b>Storage instructions</b> | Shipped at 4°C. Upon delivery aliquot and store at -20°C. Avoid freeze / thaw cycles.  |
| <b>Storage buffer</b>       | pH: 7.20<br>Preservative: 0.05% Sodium azide<br>Constituents: 0.1% BSA, 40% Glycerol (glycerin, glycerine), 9.85% Tris glycine, 50% Tissue culture supernatant |

|                     |                    |
|---------------------|--------------------|
| <b>Purity</b>       | Protein A purified |
| <b>Clonality</b>    | Monoclonal         |
| <b>Clone number</b> | EPR1603Y           |
| <b>Isotype</b>      | IgG                |

## Applications

**The Abpromise guarantee** Our **Abpromise guarantee** covers the use of ab52620 in the following tested applications. The application notes include recommended starting dilutions; optimal dilutions/concentrations should be determined by the end user.

| Application   | Abreviews | Notes   |
|---------------|-----------|---|
| <b>WB</b>     |           | 1/100000. Predicted molecular weight: 60 kDa.   |
| <b>IHC-P</b>  |           | Use at an assay dependent concentration. Perform heat mediated antigen retrieval with citrate buffer pH 6 before commencing with IHC staining protocol. |
| <b>ICC/IF</b> |           | 1/100 - 1/250.  |

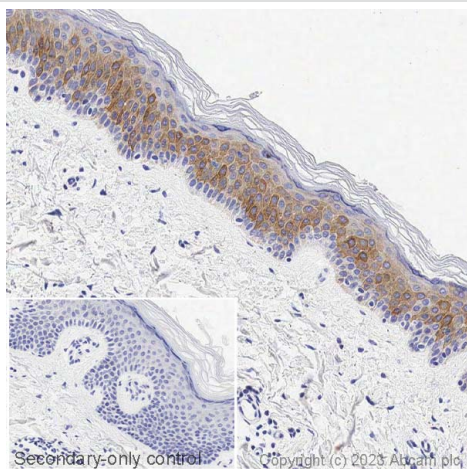
**Application notes** Is unsuitable for Flow Cyt or IP.

## Target

**Tissue specificity** Constitutively expressed in distinct types of epithelia such as those in oral mucosa, esophagus, papillae of tongue and hair follicle outer root sheath.

**Sequence similarities** Belongs to the intermediate filament family.

## Images

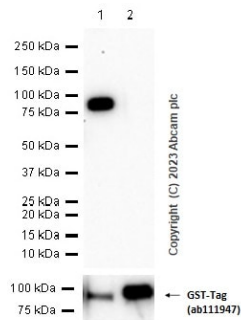


Immunohistochemistry (Formalin/PFA-fixed paraffin-embedded sections) - Anti-Cytokeratin 6 antibody [EPR1603Y] (ab52620)

IHC image of Cytokeratin 6 staining in a section of formalin-fixed paraffin-embedded normal human skin\* performed on a Leica Biosystems BOND® RX instrument. The section was pre-treated using heat mediated antigen retrieval with sodium citrate buffer (pH6, epitope retrieval solution 1) for 20mins. The section was then incubated with ab52620, 1ug/ml, for 15 mins at room temperature and detected using an HRP conjugated compact polymer system. DAB was used as the chromogen. The section was then counterstained with haematoxylin and mounted with DPX. The inset secondary-only control image is taken from an identical assay without primary antibody.

For other IHC staining systems (automated and non-automated) customers should optimize variable parameters such as antigen retrieval conditions, primary antibody concentration and antibody incubation times.

*\*Tissue obtained from the Human Research Tissue Bank,  
supported by the NIHR Cambridge Biomedical Research Centre*



Western blot - Anti-Cytokeratin 6 antibody  
[EPR1603Y] (ab52620)

**All lanes :** Anti-Cytokeratin 6 antibody [EPR1603Y] (ab52620) at 1/1000 dilution

**Lane 1 :** N-GST tagged full-length recombinant human Cytokeratin 6A protein, 10 ng

**Lane 2 :** N-GST tagged full-length recombinant human Cytokeratin 5 protein, 10 ng

### Secondary

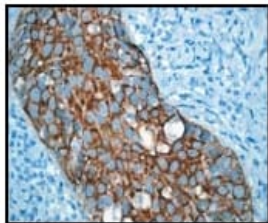
**All lanes :** Goat Anti-Rabbit IgG H&L (HRP) (**ab97051**) at 1/20000 dilution

**Predicted band size:** 60 kDa

**Observed band size:** 87 kDa

**Exposure time:** 180 seconds

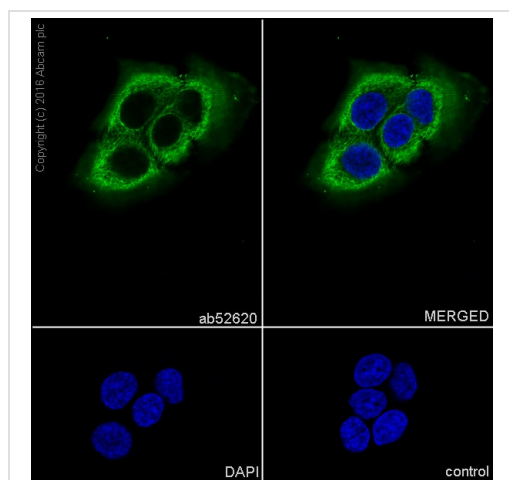
**Blocking buffer:** 5% NFDM /TBST.



Immunohistochemistry (Formalin/PFA-fixed paraffin-embedded sections) - Anti-Cytokeratin 6 antibody  
[EPR1603Y] (ab52620)

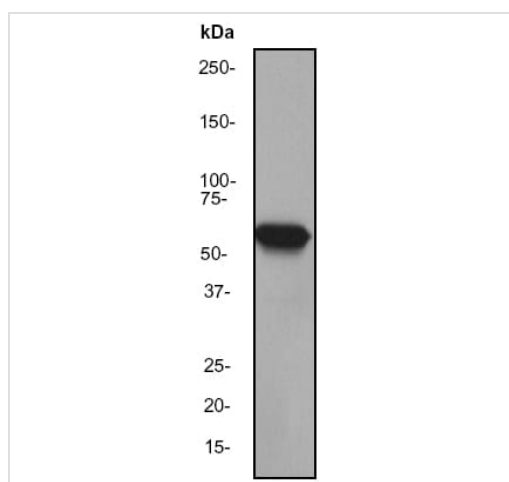
Ab52620 at 1/100-1/250 dilution staining human squamous cervical carcinoma; paraffin embedded.

Perform heat mediated antigen retrieval with citrate buffer pH 6 before commencing with IHC staining protocol.



Immunocytochemistry/ Immunofluorescence - Anti-Cytokeratin 6 antibody [EPR1603Y] (ab52620)

Immunocytochemistry/Immunofluorescence analysis of HaCaT (Human keratinocyte cell line) labelling Cytokeratin 6 with purified ab52620 at 1/1000. Cells were fixed with 4% PFA and permeabilized with 0.1% triton X-100. **ab150077** Goat anti rabbit IgG (Alexa Fluor® 488) at 1/1000 was used as the secondary antibody. Nuclei were counterstained with DAPI. PBS was used instead of the primary antibody as the negative control.



Western blot - Anti-Cytokeratin 6 antibody [EPR1603Y] (ab52620)

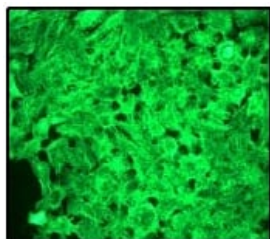
Anti-Cytokeratin 6 antibody [EPR1603Y] (ab52620) at 1/100000 dilution + A431 cell lysate at 10 µg

### Secondary

Goat anti-rabbit HRP antibody at 1/2000 dilution

**Predicted band size:** 60 kDa

**Observed band size:** 60 kDa



Ab52620 at 1/100-1/250 dilution staining A431 cells.

Immunocytochemistry/ Immunofluorescence - Anti-Cytokeratin 6 antibody [EPR1603Y] (ab52620)

### Why choose a recombinant antibody?



**Research with confidence**  
Consistent and reproducible results



**Long-term and scalable supply**  
Recombinant technology



**Success from the first experiment**  
Confirmed specificity



**Ethical standards compliant**  
Animal-free production

Anti-Cytokeratin 6 antibody [EPR1603Y] (ab52620)

**Please note:** All products are "FOR RESEARCH USE ONLY. NOT FOR USE IN DIAGNOSTIC PROCEDURES"

### Our Abpromise to you: Quality guaranteed and expert technical support

- Replacement or refund for products not performing as stated on the datasheet
- Valid for 12 months from date of delivery
- Response to your inquiry within 24 hours
- We provide support in Chinese, English, French, German, Japanese and Spanish
- Extensive multi-media technical resources to help you
- We investigate all quality concerns to ensure our products perform to the highest standards

If the product does not perform as described on this datasheet, we will offer a refund or replacement. For full details of the Abpromise, please visit <https://www.abcam.com/abpromise> or contact our technical team.

## **Terms and conditions**

---

- Guarantee only valid for products bought direct from Abcam or one of our authorized distributors