

Product datasheet

Anti-Cytokeratin 6 antibody [Ks6.KA12] ab18586

★★★★★ [4 Abreviews](#) [9 References](#) [1 Image](#)

Overview

Product name	Anti-Cytokeratin 6 antibody [Ks6.KA12]
Description	Mouse monoclonal [Ks6.KA12] to Cytokeratin 6
Host species	Mouse
Tested applications	Suitable for: Flow Cyt
Species reactivity	Reacts with: Human
Immunogen	A cytoskeletal preparation of human callus material was used for immunization.
General notes	<p>The Life Science industry has been in the grips of a reproducibility crisis for a number of years. Abcam is leading the way in addressing this with our range of recombinant monoclonal antibodies and knockout edited cell lines for gold-standard validation. Please check that this product meets your needs before purchasing.</p> <p>If you have any questions, special requirements or concerns, please send us an inquiry and/or contact our Support team ahead of purchase. Recommended alternatives for this product can be found below, along with publications, customer reviews and Q&As</p>

Properties

Form	Liquid
Storage instructions	Shipped at 4°C. Store at +4°C short term (1-2 weeks). Upon delivery aliquot. Store at -20°C long term.
Storage buffer	pH: 7.3 Preservative: 0.09% Sodium azide Constituents: 0.5% BSA, PBS
Purity	Protein A purified
Purification notes	Purified by protein A affinity chromatography.
Clonality	Monoclonal
Clone number	Ks6.KA12
Isotype	IgG1

Applications

The Abpromise guarantee

Our **Abpromise guarantee** covers the use of ab18586 in the following tested applications.

The application notes include recommended starting dilutions; optimal dilutions/concentrations should be determined by the end user.

Application	Abreviews	Notes
Flow Cyt		Use 2µg for 10 ⁶ cells. ab170190 - Mouse monoclonal IgG1, is suitable for use as an isotype control with this antibody.

Target

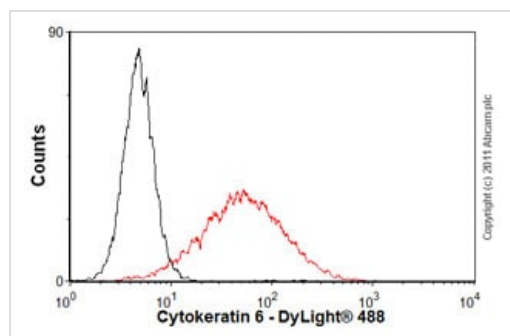
Tissue specificity

Constitutively expressed in distinct types of epithelia such as those in oral mucosa, esophagus, papillae of tongue and hair follicle outer root sheath.

Sequence similarities

Belongs to the intermediate filament family.

Images



Flow Cytometry - Anti-Cytokeratin 6 antibody
[Ks6.KA12] (ab18586)

Overlay histogram showing A431 cells stained with ab18586 (red line). The cells were fixed with 80% methanol (5 min) and then permeabilized with 0.1% PBS-Triton for 20 min. The cells were then incubated in 1x PBS / 10% normal goat serum / 0.3M glycine to block non-specific protein-protein interactions followed by the antibody (ab18586, 2µg/1x10⁶ cells) for 30 min at 22°C. The secondary antibody used was a **goat anti-mous DyLight® 488** (IgG H+L) (**ab96879**) at 1/500 dilution for 30 min at 22°C. Isotype control antibody (black line) was mouse IgG1 [ICIGG1](**ab91353**, 2µg/1x10⁶ cells) used under the same conditions. Acquisition of >5,000 events was performed. This antibody gave a positive signal in A431 cells fixed with 4% paraformaldehyde/permeabilized in 0.1% PBS-Triton used under the same conditions.

Please note: All products are "FOR RESEARCH USE ONLY. NOT FOR USE IN DIAGNOSTIC PROCEDURES"

Our Abpromise to you: Quality guaranteed and expert technical support

- Replacement or refund for products not performing as stated on the datasheet
- Valid for 12 months from date of delivery
- Response to your inquiry within 24 hours
- We provide support in Chinese, English, French, German, Japanese and Spanish
- Extensive multi-media technical resources to help you
- We investigate all quality concerns to ensure our products perform to the highest standards

If the product does not perform as described on this datasheet, we will offer a refund or replacement. For full details of the Abpromise, please visit <https://www.abcam.com/abpromise> or contact our technical team.

Terms and conditions

- Guarantee only valid for products bought direct from Abcam or one of our authorized distributors