

Product datasheet

Anti-Cytomegalovirus Glycoprotein B antibody [2F12] ab6499

★★★★★ [1 Abreviews](#) [14 References](#) [5 Images](#)

Overview

Product name	Anti-Cytomegalovirus Glycoprotein B antibody [2F12]
Description	Mouse monoclonal [2F12] to Cytomegalovirus Glycoprotein B
Host species	Mouse
Tested applications	Suitable for: WB, ELISA, ICC/IF
Species reactivity	Reacts with: Human cytomegalovirus
Immunogen	Tissue, cells or virus corresponding to Human Cytomegalovirus Glycoprotein B. Human Cytomegalovirus (AD169) infected human fibroblast cells
Epitope	Epitope has not been mapped.
General notes	<p>The Life Science industry has been in the grips of a reproducibility crisis for a number of years. Abcam is leading the way in addressing this with our range of recombinant monoclonal antibodies and knockout edited cell lines for gold-standard validation. Please check that this product meets your needs before purchasing.</p> <p>If you have any questions, special requirements or concerns, please send us an inquiry and/or contact our Support team ahead of purchase. Recommended alternatives for this product can be found below, along with publications, customer reviews and Q&As</p>

Properties

Form	Liquid
Storage instructions	Shipped at 4°C. Upon delivery aliquot and store at -20°C or -80°C. Avoid repeated freeze / thaw cycles.
Storage buffer	pH: 7.40 Constituent: PBS
Purity	Protein A purified
Clonality	Monoclonal
Clone number	2F12
Myeloma	NS1/1-Ag4-1
Isotype	IgG1

Light chain type

kappa

Applications

The Abpromise guarantee

Our **Abpromise guarantee** covers the use of ab6499 in the following tested applications.

The application notes include recommended starting dilutions; optimal dilutions/concentrations should be determined by the end user.

Application	Abreviews	Notes
WB	★★★★★ (1)	
ELISA		
ICC/IF		

Application notes

Immunofluorescence titer 1+ @ 1:12,800, IFA is tested with acetone fixation.
ELISA titer 0.100 @ 1:102,400
Western Blot > 1:4,000

Target

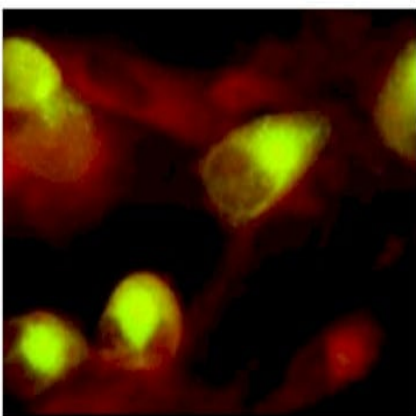
Relevance

Human cytomegalovirus (HCMV) glycoprotein B (gB) is an abundant virion envelope protein that has been shown to be essential for the infectivity of HCMV. HCMV gB is also one of the most immunogenic virus-encoded proteins, and a significant fraction of virus neutralizing antibodies are directed at gB.

Cellular localization

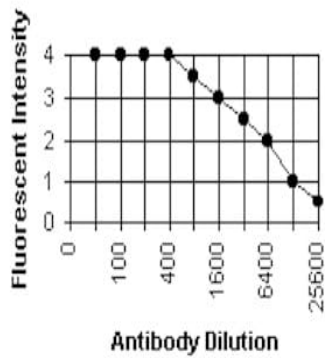
Virus envelope.

Images



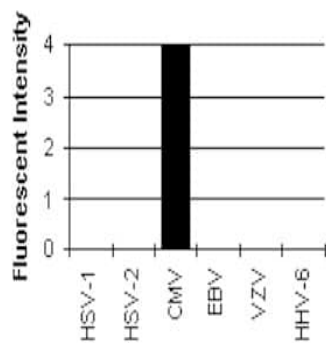
See protocol for procedure. Procedure uses 10-well CMV slides and anti-Mouse-FITC F(ab')₂ w/ counterstain.

Immunocytochemistry/ Immunofluorescence - Anti-Cytomegalovirus Glycoprotein B antibody [2F12] (ab6499)



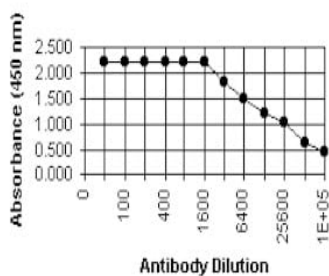
See protocol for procedure. Procedure uses 10-well CMV slides and anti-Mouse-FITC F(ab')₂ w/ counterstain.

Immunocytochemistry/ Immunofluorescence - Anti-Cytomegalovirus Glycoprotein B antibody [2F12] (ab6499)



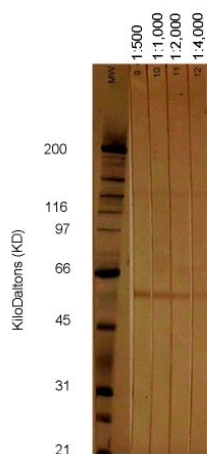
Determined by IFA (see protocol section) at an antibody dilution of 1:100 with anti-Mouse-FITC F(ab')₂ w/ counterstain.

Immunocytochemistry/ Immunofluorescence - Anti-Cytomegalovirus Glycoprotein B antibody [2F12] (ab6499)



See protocol for procedure. Antigen is CMV Infected Cell Extract coated at a dilution of 1:100.

ELISA - Anti-Cytomegalovirus Glycoprotein B antibody [2F12] (ab6499)



Western blot - Anti-Cytomegalovirus Glycoprotein B antibody [2F12] (ab6499)

See protocol for procedure. Antigen is CMV Infected Cell Extract at 10 µg/cm.

See protocol for procedure. Antigen is CMV Infected Cell Extract at 10 µg/cm.

Please note: All products are "FOR RESEARCH USE ONLY. NOT FOR USE IN DIAGNOSTIC PROCEDURES"

Our Abpromise to you: Quality guaranteed and expert technical support

- Replacement or refund for products not performing as stated on the datasheet
- Valid for 12 months from date of delivery
- Response to your inquiry within 24 hours
- We provide support in Chinese, English, French, German, Japanese and Spanish
- Extensive multi-media technical resources to help you
- We investigate all quality concerns to ensure our products perform to the highest standards

If the product does not perform as described on this datasheet, we will offer a refund or replacement. For full details of the Abpromise, please visit <https://www.abcam.com/abpromise> or contact our technical team.

Terms and conditions

- Guarantee only valid for products bought direct from Abcam or one of our authorized distributors