




Product datasheet

Anti-Cytosolic Phospholipase A2 antibody [C1] ab239730

★★★★★ [1 Abreviews](#) [1 References](#) [6 Images](#)

Overview

Product name	Anti-Cytosolic Phospholipase A2 antibody [C1]
Description	Mouse monoclonal [C1] to Cytosolic Phospholipase A2
Host species	Mouse
Tested applications	Suitable for: WB, IHC-P
Species reactivity	Reacts with: Human Predicted to work with: Mouse, Rat, Rabbit, Horse, Cow, Orangutan 
Immunogen	Recombinant fragment corresponding to Human Cytosolic Phospholipase A2 aa 550-750. N-Terminal His-tag. Expressed in E.coli Database link: P47712  Run BLAST with  Run BLAST with
Positive control	WB: Recombinant human Cytosolic Phospholipase A2 protein; human lung lysate; PC3 and HeLa cell lysates. IHC-P: Human kidney, pancreas, glioma and stomach tissue.
General notes	<p>The Life Science industry has been in the grips of a reproducibility crisis for a number of years. Abcam is leading the way in addressing this with our range of recombinant monoclonal antibodies and knockout edited cell lines for gold-standard validation. Please check that this product meets your needs before purchasing.</p> <p>If you have any questions, special requirements or concerns, please send us an inquiry and/or contact our Support team ahead of purchase. Recommended alternatives for this product can be found below, along with publications, customer reviews and Q&As</p>

Properties

Form	Liquid
Storage instructions	Shipped at 4°C. Store at +4°C short term (1-2 weeks). Upon delivery aliquot. Store at -20°C long term. Avoid freeze / thaw cycle.
Storage buffer	pH: 7.40 Preservative: 0.011% Proclin 300 Constituents: 55.77% Glycerol (glycerin, glycerine), 44.219% PBS
Purity	Protein A/G purified

Purification notes	Purified from TCS.
Clonality	Monoclonal
Clone number	C1
Isotype	IgG2b
Light chain type	kappa

Applications

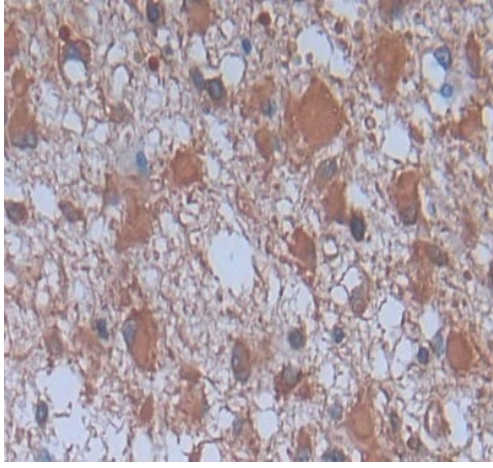
The Abpromise guarantee Our **Abpromise guarantee** covers the use of ab239730 in the following tested applications. The application notes include recommended starting dilutions; optimal dilutions/concentrations should be determined by the end user.

Application	Abreviews	Notes
WB	★★★★★ (1)	Use a concentration of 0.5 - 5 µg/ml. Predicted molecular weight: 85 kDa.
IHC-P		Use a concentration of 5 - 30 µg/ml.

Target

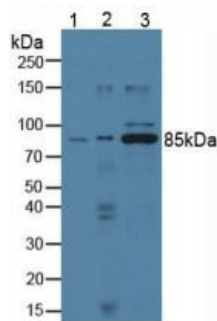
Function	Selectively hydrolyzes arachidonyl phospholipids in the sn-2 position releasing arachidonic acid. Together with its lysophospholipid activity, it is implicated in the initiation of the inflammatory response.
Tissue specificity	Expressed in various tissues such as macrophages, platelets, neutrophils, fibroblasts and lung endothelium.
Sequence similarities	Contains 1 C2 domain. Contains 1 PLA2c domain.
Domain	The N-terminal C2 domain associates with lipid membranes upon calcium binding. It modulates enzyme activity by presenting the active site to its substrate in response to elevations of cytosolic Ca(2+).
Post-translational modifications	Activated by phosphorylation at both Ser-505 and Ser-727.
Cellular localization	Cytoplasm. Cytoplasmic vesicle. Translocates to membrane vesicles in a calcium-dependent fashion.

Images



Immunohistochemistry (Formalin/PFA-fixed paraffin-embedded sections) - Anti-Cytosolic Phospholipase A2 antibody [C1] (ab239730)

Paraffin-embedded human glioma tissue stained for Cytosolic Phospholipase A2 using ab239730 at 30 µg/ml in immunohistochemical analysis. DAB staining.



Western blot - Anti-Cytosolic Phospholipase A2 antibody [C1] (ab239730)

All lanes : Anti-Cytosolic Phospholipase A2 antibody [C1] (ab239730) at 1 µg/ml

Lane 1 : Human lung lysate

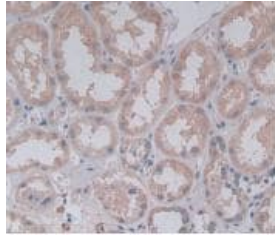
Lane 2 : PC-3 (human prostate adenocarcinoma cell line) cell lysate

Lane 3 : HeLa (human epithelial cell line from cervix adenocarcinoma) cell lysate

Secondary

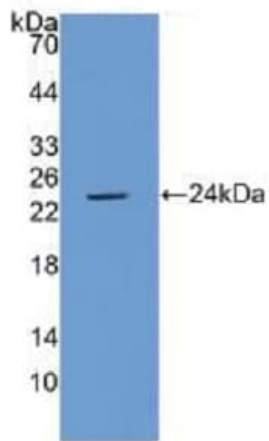
All lanes : HRP-Linked Rabbit Anti-Mouse IgG at 1/5000 dilution

Predicted band size: 85 kDa



Immunohistochemistry (Formalin/PFA-fixed paraffin-embedded sections) - Anti-Cytosolic Phospholipase A2 antibody [C1] (ab239730)

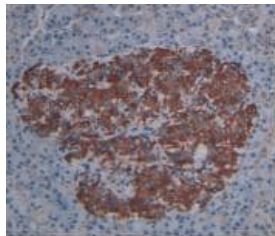
Paraffin-embedded human kidney tissue stained for Cytosolic Phospholipase A2 using ab239730 at 30 µg/ml in immunohistochemical analysis. DAB staining.



Western blot - Anti-Cytosolic Phospholipase A2 antibody [C1] (ab239730)

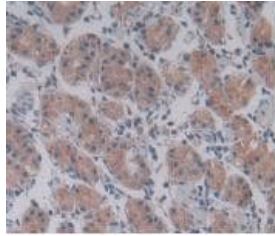
Anti-Cytosolic Phospholipase A2 antibody [C1] (ab239730) at 5 µg/ml + Recombinant human Cytosolic Phospholipase A2 protein

Predicted band size: 85 kDa



Immunohistochemistry (Formalin/PFA-fixed paraffin-embedded sections) - Anti-Cytosolic Phospholipase A2 antibody [C1] (ab239730)

Paraffin-embedded human pancreas tissue stained for Cytosolic Phospholipase A2 using ab239730 at 30 µg/ml in immunohistochemical analysis. DAB staining.



Paraffin-embedded human stomach tissue stained for Cytosolic Phospholipase A2 using ab239730 at 30 µg/ml in immunohistochemical analysis. DAB staining.

Immunohistochemistry (Formalin/PFA-fixed paraffin-embedded sections) - Anti-Cytosolic Phospholipase A2 antibody [C1] (ab239730)

Please note: All products are "FOR RESEARCH USE ONLY. NOT FOR USE IN DIAGNOSTIC PROCEDURES"

Our Abpromise to you: Quality guaranteed and expert technical support

- Replacement or refund for products not performing as stated on the datasheet
- Valid for 12 months from date of delivery
- Response to your inquiry within 24 hours
- We provide support in Chinese, English, French, German, Japanese and Spanish
- Extensive multi-media technical resources to help you
- We investigate all quality concerns to ensure our products perform to the highest standards

If the product does not perform as described on this datasheet, we will offer a refund or replacement. For full details of the Abpromise, please visit <https://www.abcam.com/abpromise> or contact our technical team.

Terms and conditions

- Guarantee only valid for products bought direct from Abcam or one of our authorized distributors