


Product datasheet

Anti-DAB2IP antibody ab87811

★★★★★ [2 Abreviews](#) [18 References](#) [2 Images](#)

Overview

Product name	Anti-DAB2IP antibody
Description	Rabbit polyclonal to DAB2IP
Host species	Rabbit
Tested applications	Suitable for: WB, IP
Species reactivity	Reacts with: Mouse, Human Predicted to work with: Rat 
Immunogen	Synthetic peptide corresponding to Human DAB2IP aa 850-950. Database link: Q5VWQ8
Positive control	WB: human HeLa, mouse TCKMK-1, Renca, 4T1 and CT26.WT cells IP: HeLa cells
General notes	<p>The Life Science industry has been in the grips of a reproducibility crisis for a number of years. Abcam is leading the way in addressing this with our range of recombinant monoclonal antibodies and knockout edited cell lines for gold-standard validation. Please check that this product meets your needs before purchasing.</p> <p>If you have any questions, special requirements or concerns, please send us an inquiry and/or contact our Support team ahead of purchase. Recommended alternatives for this product can be found below, along with publications, customer reviews and Q&As</p>

Properties

Form	Liquid
Storage instructions	Shipped at 4°C. Upon delivery aliquot and store at -20°C. Avoid freeze / thaw cycles.
Storage buffer	pH: 6.8 Preservative: 0.09% Sodium azide Constituents: 0.1% BSA, Tris buffered saline
Purity	Immunogen affinity purified
Purification notes	ab87811 was affinity purified using an epitope specific to DAB2IP immobilized on solid support.
Clonality	Polyclonal
Isotype	IgG

Applications

Applications

The Abpromise guarantee

Our **Abpromise guarantee** covers the use of ab87811 in the following tested applications.

The application notes include recommended starting dilutions; optimal dilutions/concentrations should be determined by the end user.

Application	Abreviews	Notes
WB	★★★★★ (2)	1/2000 - 1/10000. Predicted molecular weight: 132 kDa.
IP		Use at 2-5 µg/mg of lysate.

Target

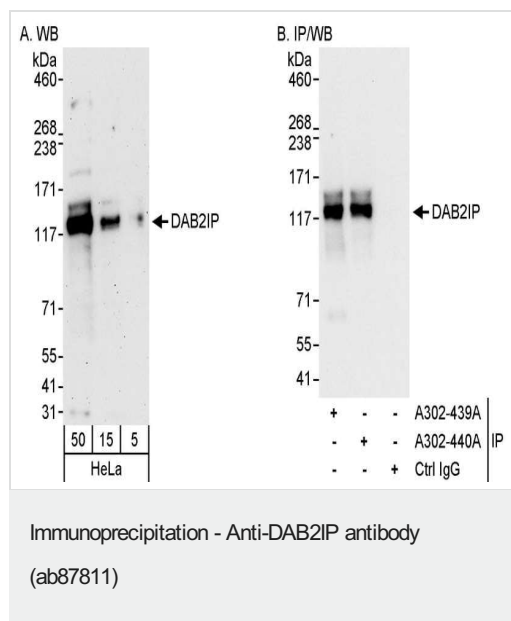
Relevance

DAB2IP is a Ras GTPase-activating protein (GAP) that acts as a tumor suppressor gene and is inactivated by methylation in prostate and breast cancers. It also interacts with MAP3K5 to disrupt the association of MAP3K5 with the inhibitory 14-3-3 complex.

Cellular localization

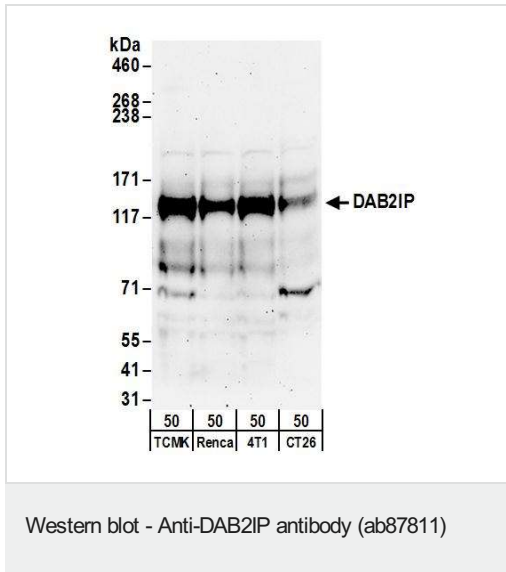
Cytoplasmic

Images



Panel A: Western blot of 0.04 µg/ml ab87811 with Lane 1: 50 µg, Lane 2: 15 µg, Lane 3: 5 µg, HeLa whole cell lysate.

Panel B: HeLa cells with Lane 1: ab87811, Lane 2: ab87811 lot: A302-439A, Lane 3: ab87811 lot: A302-440A, Lane 4: Control IgG



All lanes : Anti-DAB2IP antibody (ab87811) at 0.1 µg/ml

Lane 1 : TCKMK-1 (mouse kidney epithelial cell line) whole cell lysate

Lane 2 : Renca (murine renal carcinoma cell line) whole cell lysate

Lane 3 : 4T1 (murine mammary carcinoma cell line) whole cell lysate

Lane 4 : CT26.WT (mouse colon carcinoma cell line) whole cell lysate

Predicted band size: 132 kDa

Please note: All products are "FOR RESEARCH USE ONLY. NOT FOR USE IN DIAGNOSTIC PROCEDURES"

Our Abpromise to you: Quality guaranteed and expert technical support

- Replacement or refund for products not performing as stated on the datasheet
- Valid for 12 months from date of delivery
- Response to your inquiry within 24 hours
- We provide support in Chinese, English, French, German, Japanese and Spanish
- Extensive multi-media technical resources to help you
- We investigate all quality concerns to ensure our products perform to the highest standards

If the product does not perform as described on this datasheet, we will offer a refund or replacement. For full details of the Abpromise, please visit <https://www.abcam.com/abpromise> or contact our technical team.

Terms and conditions

- Guarantee only valid for products bought direct from Abcam or one of our authorized distributors