


Anti-DBR1 antibody ab154230

★★★★★ [2 Abreviews](#) [1 References](#) [2 Images](#)

Overview

Product name	Anti-DBR1 antibody
Description	Rabbit polyclonal to DBR1
Host species	Rabbit
Tested applications	Suitable for: WB
Species reactivity	Reacts with: Human Predicted to work with: Mouse, Rat 
Immunogen	Recombinant fragment, corresponding to a region within amino acids 68-324 of Human DBR1 (Uniprot Q9UK59).
Positive control	A549 whole cell lysate
General notes	<p>The Life Science industry has been in the grips of a reproducibility crisis for a number of years. Abcam is leading the way in addressing this with our range of recombinant monoclonal antibodies and knockout edited cell lines for gold-standard validation. Please check that this product meets your needs before purchasing.</p> <p>If you have any questions, special requirements or concerns, please send us an inquiry and/or contact our Support team ahead of purchase. Recommended alternatives for this product can be found below, along with publications, customer reviews and Q&As</p>

Properties

Form	Liquid
Storage instructions	Shipped at 4°C. Upon delivery aliquot and store at -20°C or -80°C. Avoid repeated freeze / thaw cycles.
Storage buffer	pH: 7.00 Preservative: 0.01% Thimerosal (merthiolate) Constituents: 1.21% Tris, 0.75% Glycine, 20% Glycerol (glycerin, glycerine)
Purity	Immunogen affinity purified
Clonality	Polyclonal
Isotype	IgG

Applications

The Abpromise guarantee

Our **Abpromise guarantee** covers the use of ab154230 in the following tested applications.

The application notes include recommended starting dilutions; optimal dilutions/concentrations should be determined by the end user.

Application	Abreviews	Notes
WB	★★★★★ (2)	1/500 - 1/3000. Predicted molecular weight: 62 kDa.

Target

Function

Cleaves the 2'-5' phosphodiester linkage at the branch point of lariat intron pre-mRNAs after splicing and converts them into linear molecules that are subsequently degraded. It thereby facilitates ribonucleotide turnover. It may also participate in retrovirus replication via a RNA lariat intermediate in cDNA synthesis.

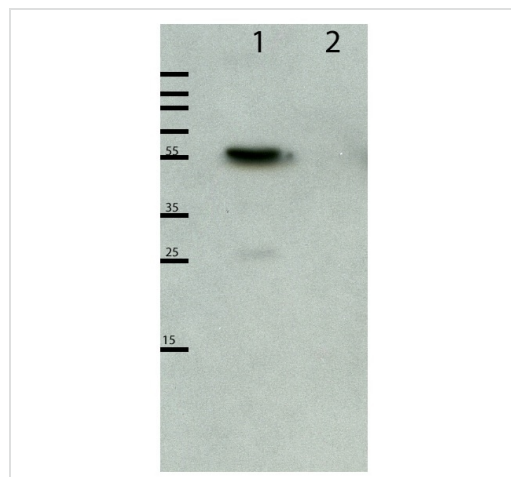
Sequence similarities

Belongs to the lariat debranching enzyme family.

Cellular localization

Nucleus.

Images



Western blot - Anti-DBR1 antibody (ab154230)
This image is courtesy of an anonymous Abreview

All lanes : Anti-DBR1 antibody (ab154230) at 1/10000 dilution

Lane 1 : Xenopus tropicalis oocyte 5 GV (nuclear) lysate

Lane 2 : Xenopus tropicalis oocyte cytoplasmic lysate

Lysates/proteins at 5 cells per lane.

Secondary

All lanes : HRP-conjugated anti-rabbit polyclonal at 1/20000 dilution

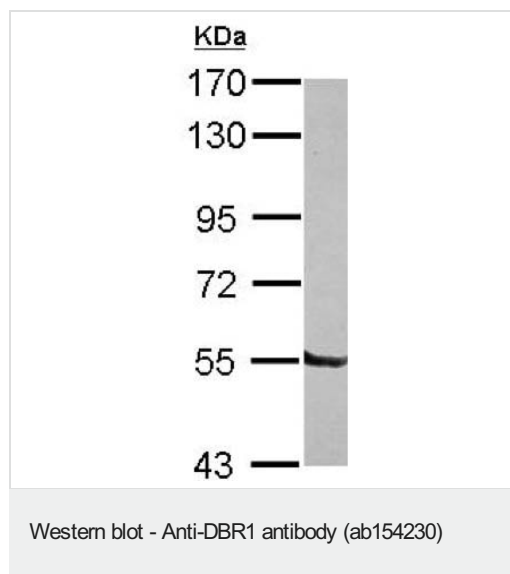
Developed using the ECL technique.

Performed under reducing conditions.

Predicted band size: 62 kDa

Observed band size: 53 kDa

Exposure time: 10 seconds



Anti-DBR1 antibody (ab154230) at 1/1000 dilution + A549 whole cell lysate at 30 µg

Predicted band size: 62 kDa

7.5% SDS PAGE

Please note: All products are "FOR RESEARCH USE ONLY. NOT FOR USE IN DIAGNOSTIC PROCEDURES"

Our Abpromise to you: Quality guaranteed and expert technical support

- Replacement or refund for products not performing as stated on the datasheet
- Valid for 12 months from date of delivery
- Response to your inquiry within 24 hours
- We provide support in Chinese, English, French, German, Japanese and Spanish
- Extensive multi-media technical resources to help you
- We investigate all quality concerns to ensure our products perform to the highest standards

If the product does not perform as described on this datasheet, we will offer a refund or replacement. For full details of the Abpromise, please visit <https://www.abcam.com/abpromise> or contact our technical team.

Terms and conditions

- Guarantee only valid for products bought direct from Abcam or one of our authorized distributors