


Product datasheet

Anti-DC-SIGNR antibody [EPR11211] ab169783

Recombinant RabMAb

[3 References](#) [7 Images](#)

Overview

Product name	Anti-DC-SIGNR antibody [EPR11211]
Description	Rabbit monoclonal [EPR11211] to DC-SIGNR
Host species	Rabbit
Tested applications	Suitable for: WB, IHC-P Unsuitable for: ICC/IF or IP
Species reactivity	Reacts with: Human Predicted to work with: Chimpanzee, Gorilla 
Immunogen	Recombinant fragment within Human DC-SIGNR aa 200-400. The exact sequence is proprietary.
Positive control	WB: Human placenta, Human kidney, and Human liver lysates. IHC-P: human placenta tissue.
General notes	<p>This product is a recombinant monoclonal antibody, which offers several advantages including:</p> <ul style="list-style-type: none"> - High batch-to-batch consistency and reproducibility - Improved sensitivity and specificity - Long-term security of supply - Animal-free production <p>For more information see here.</p> <p>Our RabMAb[®] technology is a patented hybridoma-based technology for making rabbit monoclonal antibodies. For details on our patents, please refer to RabMAb[®] patents.</p> <p>Mouse, Rat: We have preliminary internal testing data to indicate this antibody may not react with these species. Please contact us for more information.</p>

Properties

Form	Liquid
Storage instructions	Shipped at 4°C. Store at +4°C short term (1-2 weeks). Upon delivery aliquot. Store at -20°C long term.
Storage buffer	Preservative: 0.01% Sodium azide Constituents: PBS, 40% Glycerol (glycerin, glycerine), 0.05% BSA
Purity	Protein A purified
Clonality	Monoclonal

Clone number	EPR11211
Isotype	IgG

Applications

The Abpromise guarantee Our **Abpromise guarantee** covers the use of ab169783 in the following tested applications. The application notes include recommended starting dilutions; optimal dilutions/concentrations should be determined by the end user.

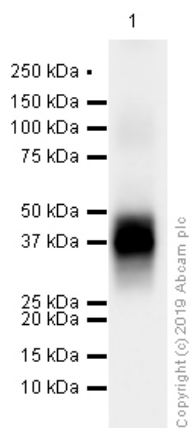
Application	Abreviews	Notes
WB		1/1000 - 1/10000. Predicted molecular weight: 45 kDa.
IHC-P		1/500. Perform heat mediated antigen retrieval with citrate buffer pH 6 before commencing with IHC staining protocol. For unpurified use at 1/100 - 1/250 See <u>IHC antigen retrieval protocols</u>.

Application notes Is unsuitable for ICC/IF or IP.

Target

Function	Probable pathogen-recognition receptor involved in peripheral immune surveillance in liver. May mediate the endocytosis of pathogens which are subsequently degraded in lysosomal compartments. Probably recognizes in a calcium-dependent manner high mannose N-linked oligosaccharides in a variety of pathogen antigens, including HIV-1 gp120, HIV-2 gp120, SIV gp120, ebolavirus glycoproteins, HCV E2, and human SARS coronavirus protein S. Is a receptor for ICAM3, probably by binding to mannose-like carbohydrates. Is presumably a coreceptor for the SARS coronavirus.
Tissue specificity	Predominantly highly expressed in liver sinusoidal endothelial cells and in lymph node. Found in placental endothelium but not in macrophages. Expressed in type II alveolar cells and lung endothelial cells.
Sequence similarities	Contains 1 C-type lectin domain.
Domain	The tandem repeat domain, also called neck domain, mediates oligomerization.
Cellular localization	Secreted and Cell membrane.

Images



Western blot - Anti-DC-SIGNR antibody [EPR11211]
(ab169783)

Anti-DC-SIGNR antibody [EPR11211] (ab169783) at 1/10000
dilution (Purified) + Human liver lysates at 15 µg

Secondary

Goat Anti-Rabbit IgG (HRP) with minimal cross-reactivity with
human IgG at 1/2000 dilution

Predicted band size: 45 kDa

Observed band size: 45 kDa



Western blot - Anti-DC-SIGNR antibody [EPR11211]
(ab169783)

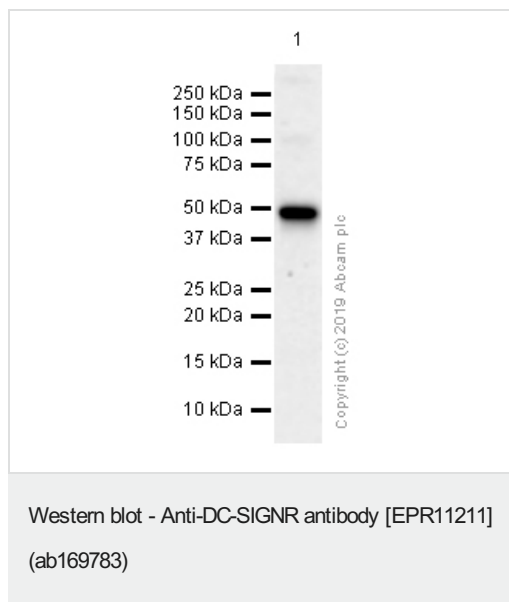
Anti-DC-SIGNR antibody [EPR11211] (ab169783) at 1/10000
dilution (Purified) + Human kidney lysates at 15 µg

Secondary

Goat Anti-Rabbit IgG (HRP) with minimal cross-reactivity with
human IgG at 1/2000 dilution

Predicted band size: 45 kDa

Observed band size: 45 kDa



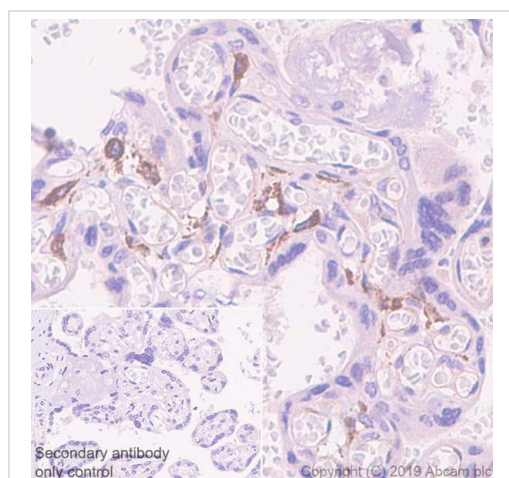
Anti-DC-SIGNR antibody [EPR11211] (ab169783) at 1/1000 dilution (Purified) + Human placenta lysates at 15 µg

Secondary

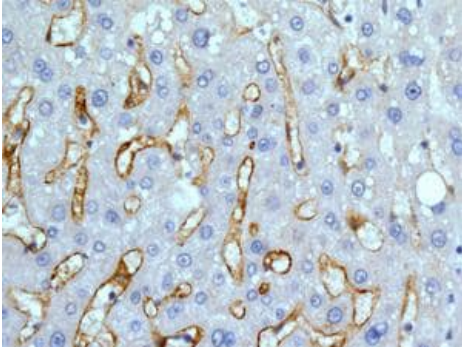
Goat Anti-Rabbit IgG (HRP) with minimal cross-reactivity with human IgG at 1/2000 dilution

Predicted band size: 45 kDa

Observed band size: 45 kDa



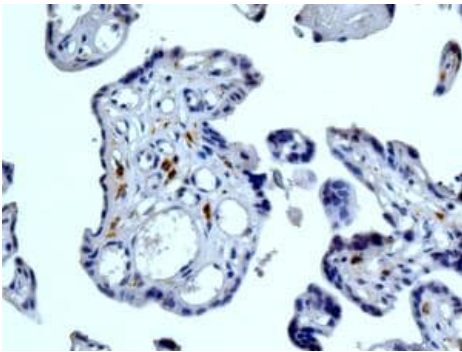
Immunohistochemistry (Formalin/PFA-fixed paraffin-embedded sections) analysis of human placenta tissue sections labeling DC-SIGNR with purified ab169783 at 1/500 dilution (0.502 µg/ml). Heat mediated antigen retrieval using Bond™ Epitope Retrieval Solution 1 (pH 6.0). Rabbit specific IHC polymer detection kit HRP/DAB ([ab209101](#)) was used as the secondary antibody. Negative control: PBS instead of the primary antibody. Hematoxylin was used as a counterstain.



Immunohistochemistry (Formalin/PFA-fixed paraffin-embedded sections) - Anti-DC-SIGNR antibody [EPR11211] (ab169783)

Immunohistochemical analysis of formalin-fixed, paraffin-embedded Human liver tissue, labeling DC-SIGNR using ab169783 at a 1/100 dilution.

Perform heat mediated antigen retrieval with citrate buffer pH 6 before commencing with IHC staining protocol.



Immunohistochemistry (Formalin/PFA-fixed paraffin-embedded sections) - Anti-DC-SIGNR antibody [EPR11211] (ab169783)

Immunohistochemical analysis of formalin-fixed, paraffin-embedded Human placenta tissue, labeling DC-SIGNR using unpurified ab169783 at a 1/100 dilution.

Perform heat mediated antigen retrieval with citrate buffer pH 6 before commencing with IHC staining protocol.

Why choose a recombinant antibody?



Research with confidence
Consistent and reproducible results



Long-term and scalable supply
Recombinant technology



Success from the first experiment
Confirmed specificity



Ethical standards compliant
Animal-free production

Anti-DC-SIGNR antibody [EPR11211] (ab169783)

Please note: All products are "FOR RESEARCH USE ONLY. NOT FOR USE IN DIAGNOSTIC PROCEDURES"

Our Abpromise to you: Quality guaranteed and expert technical support

- Replacement or refund for products not performing as stated on the datasheet
- Valid for 12 months from date of delivery
- Response to your inquiry within 24 hours
- We provide support in Chinese, English, French, German, Japanese and Spanish
- Extensive multi-media technical resources to help you
- We investigate all quality concerns to ensure our products perform to the highest standards

If the product does not perform as described on this datasheet, we will offer a refund or replacement. For full details of the Abpromise, please visit <https://www.abcam.com/abpromise> or contact our technical team.

Terms and conditions

- Guarantee only valid for products bought direct from Abcam or one of our authorized distributors