



Anti-DDHD2 antibody ab235832

2 Images

Overview

Product name	Anti-DDHD2 antibody
Description	Rabbit polyclonal to DDHD2
Host species	Rabbit
Tested applications	Suitable for: IHC-P, WB
Species reactivity	Reacts with: Human
Immunogen	Recombinant fragment corresponding to Human DDHD2 aa 350-650. Database link: O94830
	 Run BLAST with  Run BLAST with
Positive control	WB: K562, U-251, A549, HeLa, 293, and MCF7 whole cell lysates. IHC-P: Human gastric cancer tissue.
General notes	<p>The Life Science industry has been in the grips of a reproducibility crisis for a number of years. Abcam is leading the way in addressing this with our range of recombinant monoclonal antibodies and knockout edited cell lines for gold-standard validation. Please check that this product meets your needs before purchasing.</p> <p>If you have any questions, special requirements or concerns, please send us an inquiry and/or contact our Support team ahead of purchase. Recommended alternatives for this product can be found below, along with publications, customer reviews and Q&As</p>

Properties

Form	Liquid
Storage instructions	Shipped at 4°C. Store at +4°C short term (1-2 weeks). Upon delivery aliquot. Store at -20°C long term. Avoid freeze / thaw cycle.
Storage buffer	pH: 7.40 Preservative: 0.03% Proclin 300 Constituents: 50% Glycerol (glycerin, glycerine), PBS
Purity	Protein G purified
Purification notes	Purity >95%.
Clonality	Polyclonal
Isotype	IgG

Applications

The Abpromise guarantee

Our **Abpromise guarantee** covers the use of ab235832 in the following tested applications.

The application notes include recommended starting dilutions; optimal dilutions/concentrations should be determined by the end user.

Application	Abreviews	Notes
IHC-P		1/50 - 1/500.
WB		1/1000 - 1/5000. Predicted molecular weight: 81 kDa.

Target

Function

Phospholipase that hydrolyzes preferentially phosphatidic acid and phosphatidylethanolamine. May be involved in the maintenance of the endoplasmic reticulum and/or Golgi structures.

Tissue specificity

Ubiquitously expressed (at protein level).

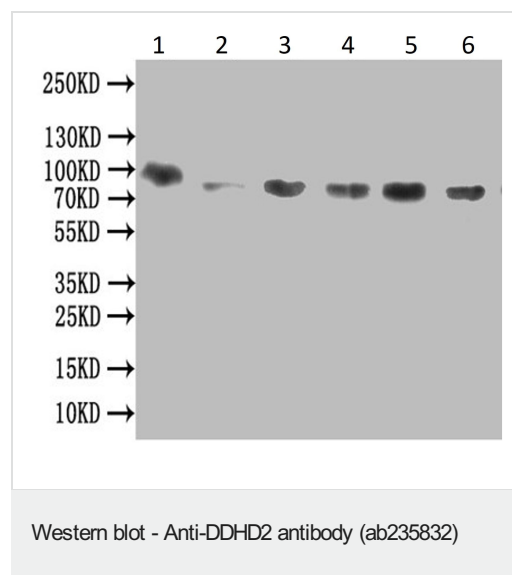
Sequence similarities

Belongs to the PA-PLA1 family.
Contains 1 DDHD domain.
Contains 1 SAM (sterile alpha motif) domain.
Contains 1 WWE domain.

Cellular localization

Cytoplasm. Cytoplasmic granule.

Images



All lanes : Anti-DDHD2 antibody (ab235832) at 1/1000 dilution

Lane 1 : K562 whole cell lysate

Lane 2 : U251 whole cell lysate

Lane 3 : A549 whole cell lysate

Lane 4 : Hela whole cell lysate

Lane 5 : 293 whole cell lysate

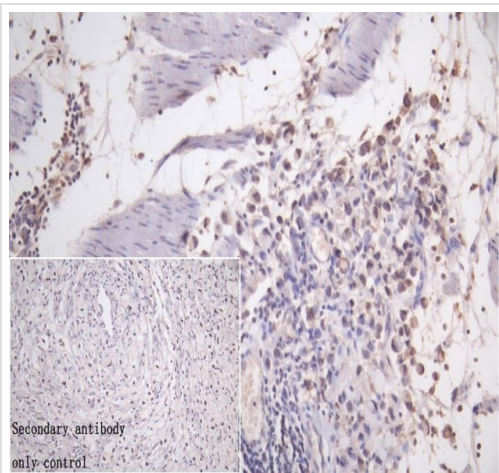
Lane 6 : MCF7 whole cell lysate

Secondary

All lanes : Secondary Goat polyclonal to rabbit IgG at 1/50000 dilution

Predicted band size: 81 kDa

Observed band size: 82 kDa



Immunohistochemical analysis of paraffin-embedded Human gastric cancer tissue labeling DDHD2 with ab235832 at 1/50 dilution followed by a ready to use LeicaDS9800 (Bond™ Polymer Refine Detection). After dewaxing and hydration, antigen retrieval was mediated by high pressure in a citrate buffer (pH 6.0). Section was blocked with 10% normal goat serum 30min at RT. Then primary antibody (1% BSA) was incubated at 4°C overnight. The primary is detected by a Goat anti-rabbit polymer IgG labeled by HRP and visualized using 0.05% DAB. Secondary antibody only control: uses 1% BSA instead of primary antibody.

Immunohistochemistry (Formalin/PFA-fixed paraffin-embedded sections) - Anti-DDHD2 antibody (ab235832)

Please note: All products are "FOR RESEARCH USE ONLY. NOT FOR USE IN DIAGNOSTIC PROCEDURES"

Our Abpromise to you: Quality guaranteed and expert technical support

- Replacement or refund for products not performing as stated on the datasheet
- Valid for 12 months from date of delivery
- Response to your inquiry within 24 hours
- We provide support in Chinese, English, French, German, Japanese and Spanish
- Extensive multi-media technical resources to help you
- We investigate all quality concerns to ensure our products perform to the highest standards

If the product does not perform as described on this datasheet, we will offer a refund or replacement. For full details of the Abpromise, please visit <https://www.abcam.com/abpromise> or contact our technical team.

Terms and conditions

- Guarantee only valid for products bought direct from Abcam or one of our authorized distributors