


Product datasheet

Anti-DDX18 antibody ab70526

[2 Images](#)

Overview

Product name	Anti-DDX18 antibody
Description	Rabbit polyclonal to DDX18
Host species	Rabbit
Specificity	We have data to indicate that this antibody may not cross react with Mouse. However, this has not been conclusively tested and expression levels may vary in certain cell lines/tissues.
Tested applications	Suitable for: WB, IP
Species reactivity	Reacts with: Human Predicted to work with: Rabbit, Cow, Dog, Pig, Chimpanzee, Baboon, Rhesus monkey, Gorilla, Orangutan, Elephant 
Immunogen	A region between residues 1 and 50 of human DDX18 (NP_006764.3)
Positive control	Whole cell lysate from HeLa and 293T cells.
General notes	<p>The Life Science industry has been in the grips of a reproducibility crisis for a number of years. Abcam is leading the way in addressing this with our range of recombinant monoclonal antibodies and knockout edited cell lines for gold-standard validation. Please check that this product meets your needs before purchasing.</p> <p>If you have any questions, special requirements or concerns, please send us an inquiry and/or contact our Support team ahead of purchase. Recommended alternatives for this product can be found below, along with publications, customer reviews and Q&As</p>

Properties

Form	Liquid
Storage instructions	Shipped at 4°C. Upon delivery aliquot and store at -20°C. Avoid freeze / thaw cycles.
Storage buffer	pH: 6.8 Preservative: 0.09% Sodium azide Constituents: 0.1% BSA, Tris buffered saline
Purity	Immunogen affinity purified
Clonality	Polyclonal
Isotype	IgG

Applications

The Abpromise guarantee

Our **Abpromise guarantee** covers the use of ab70526 in the following tested applications.

The application notes include recommended starting dilutions; optimal dilutions/concentrations should be determined by the end user.

Application	Abreviews	Notes
WB		
IP		

Application notes

IP: Use at 1 - 4 µg/mg of lysate.

WB: 1/2000 - 1/10000. Detects a band of approximately 75 kDa (predicted molecular weight: 75 kDa).

Not yet tested in other applications.

Optimal dilutions/concentrations should be determined by the end user.

Target

Function

Probable RNA-dependent helicase.

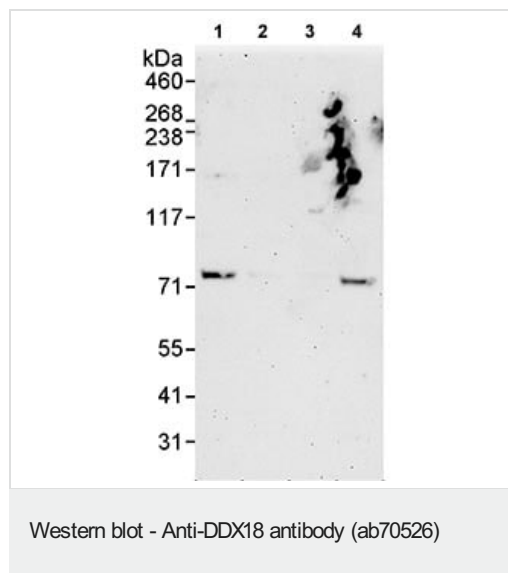
Sequence similarities

Belongs to the DEAD box helicase family. DDX18/HAS1 subfamily.

Contains 1 helicase ATP-binding domain.

Contains 1 helicase C-terminal domain.

Images



All lanes : Anti-DDX18 antibody (ab70526) at 0.04 µg/ml

Lane 1 : Whole cell lysate from HeLa cells at 50 µg

Lane 2 : Whole cell lysate from HeLa cells at 15 µg

Lane 3 : Whole cell lysate from HeLa cells at 5 µg

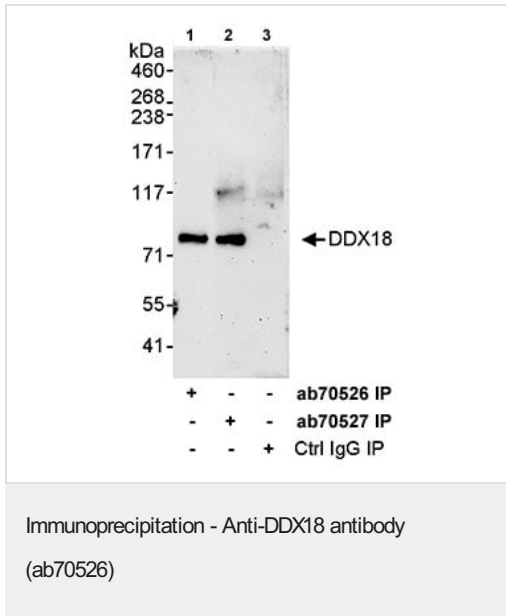
Lane 4 : Whole cell lysate from 293T cells at 50 µg

Developed using the ECL technique.

Predicted band size: 75 kDa

Observed band size: 75 kDa

Exposure time: 3 minutes



Detection of DDX18 by Immunoprecipitation in Whole cell lysate from HeLa cells (1 mg for IP, 20% of IP loaded) using ab70526 (Lane 1) and **ab70527** (Lane 2) at 3 µg/mg lysate for IP. ab70526 was used at 1 µg/ml for subsequent WB detection. Lane 3 represents control IgG IP.

Please note: All products are "FOR RESEARCH USE ONLY. NOT FOR USE IN DIAGNOSTIC PROCEDURES"

Our Abpromise to you: Quality guaranteed and expert technical support

- Replacement or refund for products not performing as stated on the datasheet
- Valid for 12 months from date of delivery
- Response to your inquiry within 24 hours
- We provide support in Chinese, English, French, German, Japanese and Spanish
- Extensive multi-media technical resources to help you
- We investigate all quality concerns to ensure our products perform to the highest standards

If the product does not perform as described on this datasheet, we will offer a refund or replacement. For full details of the Abpromise, please visit <https://www.abcam.com/abpromise> or contact our technical team.

Terms and conditions

- Guarantee only valid for products bought direct from Abcam or one of our authorized distributors