

# Anti-DDX3 antibody ab62581

[2 References](#) [2 Images](#)

### Overview

<b>Product name</b>	Anti-DDX3 antibody
<b>Description</b>	Rabbit polyclonal to DDX3
<b>Host species</b>	Rabbit
<b>Specificity</b>	ab62581 detects both DDX3 and DBY.
<b>Tested applications</b>	<b>Suitable for:</b> ICC, WB
<b>Species reactivity</b>	<b>Reacts with:</b> Human
<b>Immunogen</b>	A 16 amino acid peptide from near the center of human DDX3
<b>Positive control</b>	HepG2 cells
<b>General notes</b>	<p>The Life Science industry has been in the grips of a reproducibility crisis for a number of years. Abcam is leading the way in addressing this with our range of recombinant monoclonal antibodies and knockout edited cell lines for gold-standard validation. Please check that this product meets your needs before purchasing.</p> <p>If you have any questions, special requirements or concerns, please send us an inquiry and/or contact our Support team ahead of purchase. Recommended alternatives for this product can be found below, along with publications, customer reviews and Q&amp;As</p>

### Properties

<b>Form</b>	Liquid
<b>Storage instructions</b>	Shipped at 4°C. Store at +4°C short term (1-2 weeks). Store at -20°C long term.
<b>Storage buffer</b>	pH: 7.2 Preservative: 0.02% Sodium azide Constituent: PBS
<b>Purity</b>	Immunogen affinity purified
<b>Clonality</b>	Polyclonal
<b>Isotype</b>	IgG

### Applications

The **Abpromise guarantee** Our **Abpromise guarantee** covers the use of ab62581 in the following tested applications.

The application notes include recommended starting dilutions; optimal dilutions/concentrations should be determined by the end user.

Application	Abreviews	Notes
ICC		Use a concentration of 10 µg/ml.
WB		Use a concentration of 1 - 2 µg/ml. Detects a band of approximately 73 kDa (predicted molecular weight: 73 kDa).

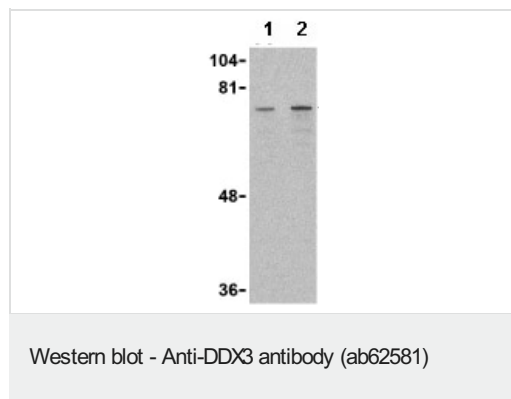
## Target

<b>Function</b>	ATP-dependent RNA helicase. Acts as a cofactor for XPO1-mediated nuclear export of incompletely spliced HIV-1 Rev RNAs. Also involved in HIV-1 replication. Interacts specifically with hepatitis C virus core protein resulting in a change in intracellular location.
<b>Sequence similarities</b>	Belongs to the DEAD box helicase family. DDX3/DED1 subfamily. Contains 1 helicase ATP-binding domain. Contains 1 helicase C-terminal domain.
<b>Cellular localization</b>	Nucleus speckle. Cytoplasm. Located predominantly in nuclear speckles and, at low levels, throughout the cytoplasm. Located to the outer side of nuclear pore complexes (NPC). Shuttles between the nucleus and the cytoplasm in a XPO1-dependent manner.

## Images



ab62581 at 10µg/ml staining DDX3 in HepG2 cells by Immunocytochemistry.



**Lane 1 :** Anti-DDX3 antibody (ab62581) at 1 µg/ml

**Lane 2 :** Anti-DDX3 antibody (ab62581) at 2 µg/ml

**All lanes :** HepG2 cell lysate

Lysates/proteins at 15 µg per lane.

**Predicted band size:** 73 kDa

**Observed band size:** 73 kDa

**Please note:** All products are "FOR RESEARCH USE ONLY. NOT FOR USE IN DIAGNOSTIC PROCEDURES"

### **Our Abpromise to you: Quality guaranteed and expert technical support**

---

- Replacement or refund for products not performing as stated on the datasheet
- Valid for 12 months from date of delivery
- Response to your inquiry within 24 hours
  
- We provide support in Chinese, English, French, German, Japanese and Spanish
- Extensive multi-media technical resources to help you
- We investigate all quality concerns to ensure our products perform to the highest standards

If the product does not perform as described on this datasheet, we will offer a refund or replacement. For full details of the Abpromise, please visit <https://www.abcam.com/abpromise> or contact our technical team.

### **Terms and conditions**

---

- Guarantee only valid for products bought direct from Abcam or one of our authorized distributors