


Product datasheet

Anti-DDX56/DDX21 antibody ab115158

[3 Images](#)

Overview

Product name	Anti-DDX56/DDX21 antibody
Description	Rabbit polyclonal to DDX56/DDX21
Host species	Rabbit
Tested applications	Suitable for: WB, IP, IHC-P
Species reactivity	Reacts with: Human Predicted to work with: Chimpanzee, Rhesus monkey, Gorilla, Orangutan 
Immunogen	Synthetic peptide corresponding to Human DDX56/DDX21 aa 450-550. Database link: Q9NY93
Positive control	HeLa and 293T cell lysates.
General notes	<p>The Life Science industry has been in the grips of a reproducibility crisis for a number of years. Abcam is leading the way in addressing this with our range of recombinant monoclonal antibodies and knockout edited cell lines for gold-standard validation. Please check that this product meets your needs before purchasing.</p> <p>If you have any questions, special requirements or concerns, please send us an inquiry and/or contact our Support team ahead of purchase. Recommended alternatives for this product can be found below, along with publications, customer reviews and Q&As</p>

Properties

Form	Liquid
Storage instructions	Shipped at 4°C. Upon delivery aliquot and store at -20°C. Avoid freeze / thaw cycles.
Storage buffer	pH: 7 Preservative: 0.09% Sodium azide Constituent: 99% Tris citrate/phosphate pH 7 to 8.
Purity	Immunogen affinity purified
Clonality	Polyclonal
Isotype	IgG

Applications

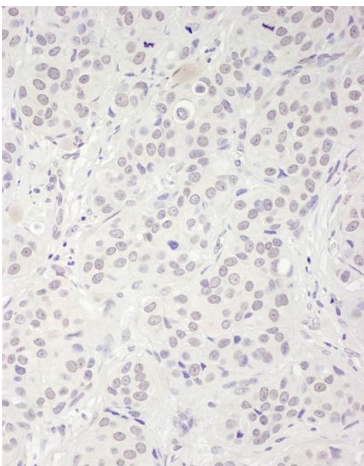
The Abpromise guarantee Our **Abpromise guarantee** covers the use of ab115158 in the following tested applications. The application notes include recommended starting dilutions; optimal dilutions/concentrations should be determined by the end user.

Application	Abreviews	Notes
WB		1/2000 - 1/10000. Predicted molecular weight: 62 kDa.
IP		Use at 2-5 µg/mg of lysate.
IHC-P		1/500 - 1/2000. Perform heat mediated antigen retrieval with citrate buffer pH 6 before commencing with IHC staining protocol.

Target

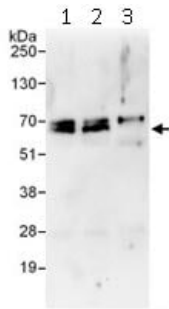
Function	May play a role in later stages of the processing of the pre-ribosomal particles leading to mature 60S ribosomal subunits. Has intrinsic ATPase activity.
Tissue specificity	Detected in heart, brain, liver, pancreas, placenta and lung.
Sequence similarities	Belongs to the DEAD box helicase family. DDX56/DBP9 subfamily. Contains 1 helicase ATP-binding domain. Contains 1 helicase C-terminal domain.
Post-translational modifications	Phosphorylated upon DNA damage, probably by ATM or ATR.
Cellular localization	Nucleus > nucleolus.

Images



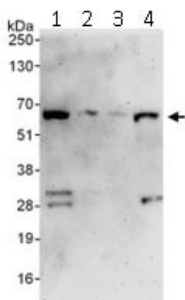
Immunohistochemistry (Formalin/PFA-fixed paraffin-embedded sections) analysis of human breast carcinoma tissue labelling DDX56/DDX21 with ab115158 at 1/1000 (1 µg/ml). Detection: DAB.

Immunohistochemistry (Formalin/PFA-fixed paraffin-embedded sections) - Anti-DDX56/DDX21 antibody (ab115158)



Immunoprecipitation - Anti-DDX56/DDX21 antibody (ab115158)

Immunoprecipitation of DDX56/DDX21 (3 µg of antibody per mg of HeLa cell lysate; 20% of the IP loaded). Lane 1- Immunoprecipitation with an anti-DDX56/DDX21 antibody that recognizes an upstream epitope; Lane 2- Immunoprecipitation with anti-DDX56/DDX21 antibody (ab115158); Lane 3- Immunoprecipitation with IgG control. Anti-DDX56/DDX21 antibody (ab115158) used at 1 µg/ml for western blot. Detection: Chemiluminescence with exposure time of 30 sec.



Western blot - Anti-DDX56/DDX21 antibody (ab115158)

All lanes : Anti-DDX56/DDX21 antibody (ab115158) at 0.1 µg/ml

Lane 1 : HeLa cell lysate at 50 µg

Lane 2 : HeLa cell lysate at 15 µg

Lane 3 : HeLa cell lysate at 5 µg

Lane 4 : 293T cell lysate at 50 µg

Predicted band size: 62 kDa

Exposure time: 3 minutes

Please note: All products are "FOR RESEARCH USE ONLY. NOT FOR USE IN DIAGNOSTIC PROCEDURES"

Our Abpromise to you: Quality guaranteed and expert technical support

- Replacement or refund for products not performing as stated on the datasheet
- Valid for 12 months from date of delivery
- Response to your inquiry within 24 hours
- We provide support in Chinese, English, French, German, Japanese and Spanish
- Extensive multi-media technical resources to help you
- We investigate all quality concerns to ensure our products perform to the highest standards

If the product does not perform as described on this datasheet, we will offer a refund or replacement. For full details of the Abpromise, please visit <https://www.abcam.com/abpromise> or contact our technical team.

Terms and conditions

- Guarantee only valid for products bought direct from Abcam or one of our authorized distributors