

Product datasheet

Anti-Dectin-1 antibody ab140039

[14 References](#) [3 Images](#)

Overview

Product name	Anti-Dectin-1 antibody
Description	Rabbit polyclonal to Dectin-1
Host species	Rabbit
Tested applications	Suitable for: WB, IHC-P, ICC/IF
Species reactivity	Reacts with: Rat, Human
Immunogen	Synthetic peptide within Human Dectin-1 aa 70-120 (extracellular). The exact sequence is proprietary. This antibody was raised against a 17 amino acid synthetic peptide near the center of human Dectin-1. Database link: Q9BXN2-1
Positive control	WB: Rat spleen tissue lysate IHC-P: Human spleen tissue ICC/IF: Jurkat cells
General notes	<p>The Life Science industry has been in the grips of a reproducibility crisis for a number of years. Abcam is leading the way in addressing this with our range of recombinant monoclonal antibodies and knockout edited cell lines for gold-standard validation. Please check that this product meets your needs before purchasing.</p> <p>If you have any questions, special requirements or concerns, please send us an inquiry and/or contact our Support team ahead of purchase. Recommended alternatives for this product can be found below, along with publications, customer reviews and Q&As</p>

Properties

Form	Liquid
Storage instructions	Shipped at 4°C. Store at +4°C short term (1-2 weeks). Store at -20°C long term.
Storage buffer	pH: 7.2 Preservative: 0.02% Sodium azide Constituent: 99% PBS
Purity	Immunogen affinity purified
Clonality	Polyclonal
Isotype	IgG

Applications

The Abpromise guarantee

Our **Abpromise guarantee** covers the use of ab140039 in the following tested applications.

The application notes include recommended starting dilutions; optimal dilutions/concentrations should be determined by the end user.

Application	Abreviews	Notes
WB		Use a concentration of 1 - 2 µg/ml. Predicted molecular weight: 28 kDa. WB for rat samples only.
IHC-P		Use a concentration of 5 µg/ml. IHC-P suitable for Human samples only
ICC/IF		Use a concentration of 20 µg/ml. ICC/IF suitable for Human samples only

Target

Function

Lectin that functions as pattern receptor specific for beta-1,3-linked and beta-1,6-linked glucans, such as cell wall constituents from pathogenic bacteria and fungi. Necessary for the TLR2-mediated inflammatory response and for TLR2-mediated activation of NF-kappa-B. Enhances cytokine production in macrophages and dendritic cells. Mediates production of reactive oxygen species in the cell. Mediates phagocytosis of C.albicans conidia. Binds T-cells in a way that does not involve their surface glycans and plays a role in T-cell activation. Stimulates T-cell proliferation.

Tissue specificity

Highly expressed in peripheral blood leukocytes and dendritic cells. Detected in spleen, bone marrow, lung, muscle, stomach and placenta.

Involvement in disease

Defects in CLEC7A may be a cause of familial candidiasis type 4 (CANDF4) [MIM:613108]. It is a rare disorder with altered immune responses and impaired clearance of fungal infections, selective against Candida. It is characterized by persistent and/or recurrent infections of the skin, nails and mucous membranes caused by organisms of the genus Candida, mainly Candida albicans.

Sequence similarities

Contains 1 C-type lectin domain.

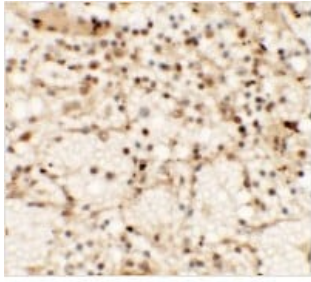
Post-translational modifications

Phosphorylated on tyrosine residues in response to glucan binding.

Cellular localization

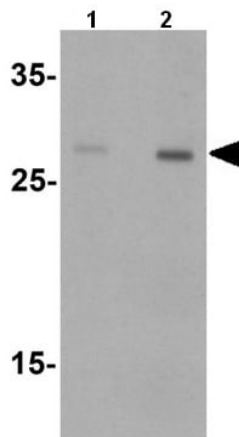
Cytoplasm and Cell membrane.

Images



Immunohistochemical analysis of paraffin-embedded Human spleen tissue, labelling Dectin-1 using ab140039 at 5 µg/ml.

Immunohistochemistry (Formalin/PFA-fixed paraffin-embedded sections) - Anti-Dectin-1 antibody (ab140039)



Lane 1 : Anti-Dectin-1 antibody (ab140039) at 1 µg/ml

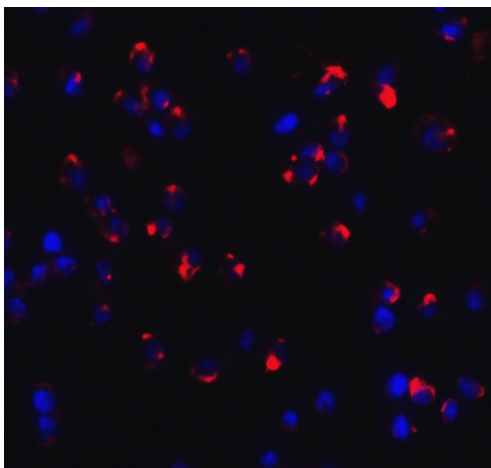
Lane 2 : Anti-Dectin-1 antibody (ab140039) at 2 µg/ml

All lanes : Rat spleen tissue lysate

Lysates/proteins at 15 µg per lane.

Predicted band size: 28 kDa

Western blot - Anti-Dectin-1 antibody (ab140039)



Immunocytochemistry/ Immunofluorescence analysis of Jurkat cells labeling Dectin-1 with ab140039 at 20 µg/mL.

Immunocytochemistry/ Immunofluorescence - Anti-Dectin-1 antibody (ab140039)

Please note: All products are "FOR RESEARCH USE ONLY. NOT FOR USE IN DIAGNOSTIC PROCEDURES"

Our Abpromise to you: Quality guaranteed and expert technical support

- Replacement or refund for products not performing as stated on the datasheet
- Valid for 12 months from date of delivery
- Response to your inquiry within 24 hours

- We provide support in Chinese, English, French, German, Japanese and Spanish
- Extensive multi-media technical resources to help you
- We investigate all quality concerns to ensure our products perform to the highest standards

If the product does not perform as described on this datasheet, we will offer a refund or replacement. For full details of the Abpromise, please visit <https://www.abcam.com/abpromise> or contact our technical team.

Terms and conditions

- Guarantee only valid for products bought direct from Abcam or one of our authorized distributors