

# Anti-delta 1 Catenin/CAS antibody [YE372] - BSA and Azide free ab247228

Recombinant RabMAb

5 Images

## Overview

<b>Product name</b>	Anti-delta 1 Catenin/CAS antibody [YE372] - BSA and Azide free
<b>Description</b>	Rabbit monoclonal [YE372] to delta 1 Catenin/CAS - BSA and Azide free
<b>Host species</b>	Rabbit
<b>Specificity</b>	This antibody is specific for human delta 1 Catenin/CAS (isoform 1ABC and 968AA). It also detects splice isoforms 1, 1A, 1B, 1C, 1AB, 1AC, 1BC, 2, 2A, 2B, 2C, 2AB, 2AC, 2BC and 2ABC of delta 1 Catenin/CAS.
<b>Tested applications</b>	<b>Suitable for:</b> IHC-P, Flow Cyt (Intra), WB, IP
<b>Species reactivity</b>	<b>Reacts with:</b> Human
<b>Immunogen</b>	Synthetic peptide. This information is proprietary to Abcam and/or its suppliers.
<b>Epitope</b>	ab247228 reacts with an epitope located in the N terminal region of delta 1 Catenin/CAS
<b>Positive control</b>	Flow Cyt (intra): HeLa cells IP: HeLa whole cell lysate.
<b>General notes</b>	ab247228 is the carrier-free version of <a href="#">ab32095</a> .

Our **carrier-free** antibodies are typically supplied in a PBS-only formulation, purified and free of BSA, sodium azide and glycerol. The carrier-free buffer and high concentration allow for increased conjugation efficiency.

This conjugation-ready format is designed for use with fluorochromes, metal isotopes, oligonucleotides, and enzymes, which makes them ideal for antibody labelling, functional and cell-based assays, flow-based assays (e.g. mass cytometry) and Multiplex Imaging applications.

Use our **conjugation kits** for antibody conjugates that are ready-to-use in as little as 20 minutes with <1 minute hands-on-time and 100% antibody recovery: available for fluorescent dyes, HRP, biotin and gold.

This product is compatible with the Maxpar<sup>®</sup> Antibody Labeling Kit from Fluidigm, without the need for antibody preparation. Maxpar<sup>®</sup> is a trademark of Fluidigm Canada Inc.

This product is a recombinant monoclonal antibody, which offers several advantages including:

- High batch-to-batch consistency and reproducibility
- Improved sensitivity and specificity
- Long-term security of supply
- Animal-free production

For more information [see here](#).

Our RabMAb<sup>®</sup> technology is a patented hybridoma-based technology for making rabbit monoclonal antibodies. For details on our patents, please refer to [RabMAb<sup>®</sup> patents](#).

## Properties

<b>Form</b>	Liquid
<b>Storage instructions</b>	Shipped at 4°C. Store at +4°C. Do Not Freeze.
<b>Storage buffer</b>	pH: 7.2 Constituent: PBS
<b>Carrier free</b>	Yes
<b>Purity</b>	Protein A purified
<b>Clonality</b>	Monoclonal
<b>Clone number</b>	YE372
<b>Isotype</b>	IgG

## Applications

**The Abpromise guarantee** Our [Abpromise guarantee](#) covers the use of ab247228 in the following tested applications. The application notes include recommended starting dilutions; optimal dilutions/concentrations should be determined by the end user.

Application	Abreviews	Notes
IHC-P		Use at an assay dependent concentration. Perform heat mediated antigen retrieval with citrate buffer pH 6 before commencing with IHC staining protocol.
Flow Cyt (Intra)		Use at an assay dependent concentration.
WB		Use at an assay dependent concentration. Predicted molecular weight: 108 kDa.
IP		Use at an assay dependent concentration.

## Target

<b>Function</b>	Binds to and inhibits the transcriptional repressor ZBTB33, which may lead to activation of target genes of the Wnt signaling pathway (By similarity). May associate with and regulate the cell adhesion properties of both C- and E-cadherins. Implicated both in cell transformation by SRC and in ligand-induced receptor signaling through the EGF, PDGF, CSF-1 and ERBB2 receptors. Promotes GLIS2 C-terminal cleavage.
<b>Tissue specificity</b>	Expressed in vascular endothelium.
<b>Sequence similarities</b>	Belongs to the beta-catenin family. Contains 10 ARM repeats.
<b>Domain</b>	A possible nuclear localization signal exists in all isoforms where Asp-626--631-Arg are deleted.

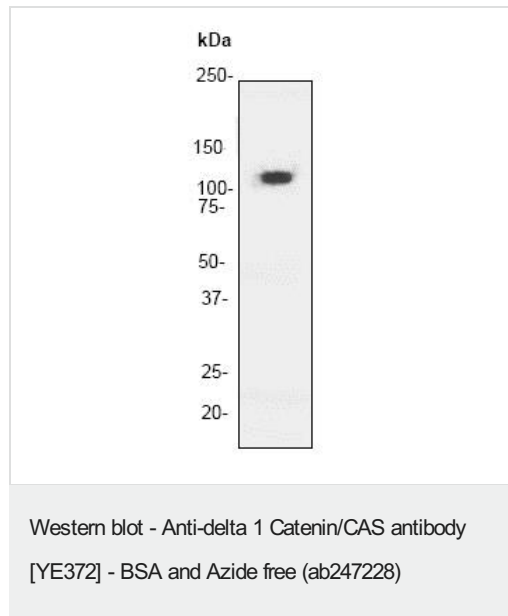
**Post-translational  
modifications**

Phosphorylated by protein-tyrosine kinases. Dephosphorylated by PTPRJ.

**Cellular localization**

Cytoplasm. Nucleus. Cell membrane. Interaction with GLIS2 promotes nuclear translocation (By similarity). NANOS1 induces its translocation from sites of cell-cell contact to the cytoplasm.

**Images**

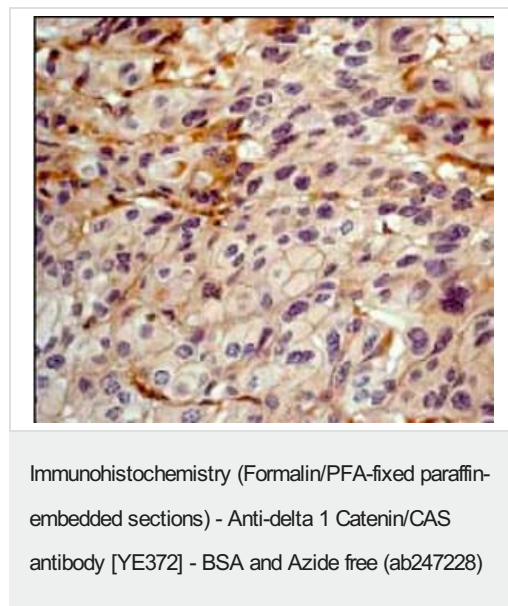


Anti-delta 1 Catenin/CAS antibody [YE372] ([ab32095](#)) at 1/5000 dilution + HeLa (Human cervix adenocarcinoma epithelial cell) whole cell lysate

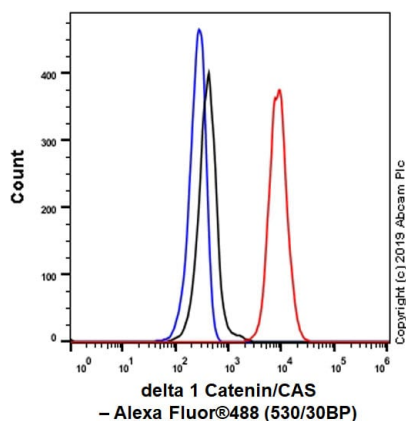
**Predicted band size:** 108 kDa

**Observed band size:** 120 kDa

This data was developed using [ab32095](#), the same antibody clone in a different buffer formulation.

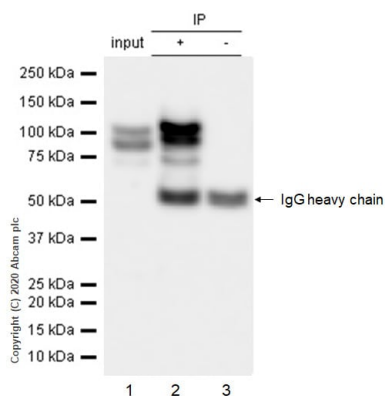


This data was developed using [ab32095](#), the same antibody clone in a different buffer formulation. [ab32095](#) at a 1/100 dilution staining delta 1 Catenin/CAS in human breast carcinoma, using Immunohistochemistry, Paraffin Embedded Tissue. Perform heat mediated antigen retrieval with citrate buffer pH 6 before commencing with IHC staining protocol.



Flow Cytometry (Intracellular) - Anti-delta 1 Catenin/CAS antibody [YE372] - BSA and Azide free (ab247228)

This data was developed using **ab32095**, the same antibody clone in a different buffer formulation. Intracellular Flow Cytometry analysis of HeLa (Human cervix adenocarcinoma epithelial cell) cells labeling delta 1 Catenin/CAS with purified **ab32095** at 1/100 dilution (10 µg/mL) (Red). Cells were fixed with 4% Paraformaldehyde and permeabilised with 90% Methanol. A Goat anti rabbit IgG (Alexa Fluor® 488, **ab150077**) secondary antibody was used at 1/2000. Isotype control - Rabbit monoclonal IgG (Black). Unlabeled control - Cells without incubation with primary antibody and secondary antibody (Blue).



Immunoprecipitation - Anti-delta 1 Catenin/CAS antibody [YE372] - BSA and Azide free (ab247228)

This data was developed using **ab32095**, the same antibody clone in a different buffer formulation.

Purified **ab32095** at 1/50 dilution (2µg) immunoprecipitating delta 1 Catenin/CAS in HeLa whole cell lysate.

Lane 1 (input): HeLa (Human cervix adenocarcinoma epithelial cell) whole cell lysate 10µg

Lane 2 (+): **ab32095** + HeLa whole cell lysate.

Lane 3 (-): Rabbit monoclonal IgG (**ab172730**) instead of **ab32095** in HeLa whole cell lysate.

VeriBlot for IP Detection Reagent (HRP) (**ab131366**) (1/1000 dilution) was used for Western blotting.

Blocking Buffer and concentration: 5% NFDm/TBST.

Diluting buffer and concentration: 5% NFDm/TBST.

Observed band size: 120 kDa

Multi-bands could be isoforms of delta 1 Catenin based on Uniprot.

### Why choose a recombinant antibody?



**Research with confidence**  
Consistent and reproducible results



**Long-term and scalable supply**  
Recombinant technology



**Success from the first experiment**  
Confirmed specificity



**Ethical standards compliant**  
Animal-free production

Anti-delta 1 Catenin/CAS antibody [YE372] - BSA and Azide free (ab247228)

**Please note:** All products are "FOR RESEARCH USE ONLY. NOT FOR USE IN DIAGNOSTIC PROCEDURES"

### Our Abpromise to you: Quality guaranteed and expert technical support

---

- Replacement or refund for products not performing as stated on the datasheet
- Valid for 12 months from date of delivery
- Response to your inquiry within 24 hours
- We provide support in Chinese, English, French, German, Japanese and Spanish
- Extensive multi-media technical resources to help you
- We investigate all quality concerns to ensure our products perform to the highest standards

If the product does not perform as described on this datasheet, we will offer a refund or replacement. For full details of the Abpromise, please visit <https://www.abcam.com/abpromise> or contact our technical team.

### Terms and conditions

---

- Guarantee only valid for products bought direct from Abcam or one of our authorized distributors