


## Product datasheet

### Anti-delta 1 Catenin/CAS (phospho Y280) antibody [EPR2384(2)] ab173578

Recombinant RabMAb

4 Images

#### Overview

<b>Product name</b>	Anti-delta 1 Catenin/CAS (phospho Y280) antibody [EPR2384(2)]
<b>Description</b>	Rabbit monoclonal [EPR2384(2)] to delta 1 Catenin/CAS (phospho Y280)
<b>Host species</b>	Rabbit
<b>Specificity</b>	This antibody only detects p120 Catenin when phosphorylated at Tyrosine 280
<b>Tested applications</b>	<b>Suitable for:</b> WB, IHC-P, IP <b>Unsuitable for:</b> Flow Cyt or ICC/IF
<b>Species reactivity</b>	<b>Reacts with:</b> Human <b>Predicted to work with:</b> Mouse, Rat 
<b>Immunogen</b>	Synthetic peptide within Human delta 1 Catenin/CAS aa 250-350 (phospho Y280) (Cysteine residue). The exact sequence is proprietary. Database link: <a href="#">O60716</a>
<b>Positive control</b>	Pervanadate treated A431 cell lysate, Human gastric adenocarcinoma
<b>General notes</b>	This product is a recombinant monoclonal antibody, which offers several advantages including: <ul style="list-style-type: none"> <li>- High batch-to-batch consistency and reproducibility</li> <li>- Improved sensitivity and specificity</li> <li>- Long-term security of supply</li> <li>- Animal-free production</li> </ul> For more information <a href="#">see here</a> . Our RabMAb <sup>®</sup> technology is a patented hybridoma-based technology for making rabbit monoclonal antibodies. For details on our patents, please refer to <a href="#">RabMAb<sup>®</sup> patents</a> .

#### Properties

<b>Form</b>	Liquid
<b>Storage instructions</b>	Shipped at 4°C. Store at +4°C short term (1-2 weeks). Upon delivery aliquot. Store at -20°C long term. Do Not Freeze.
<b>Storage buffer</b>	pH: 7.20 Preservative: 0.01% Sodium azide

	Constituents: 9% PBS, 40% Glycerol (glycerin, glycerine), 0.05% BSA, 50% Tissue culture supernatant
<b>Purity</b>	Protein A purified
<b>Clonality</b>	Monoclonal
<b>Clone number</b>	EPR2384(2)
<b>Isotype</b>	IgG

## Applications

**The Abpromise guarantee** Our **Abpromise guarantee** covers the use of ab173578 in the following tested applications. The application notes include recommended starting dilutions; optimal dilutions/concentrations should be determined by the end user.

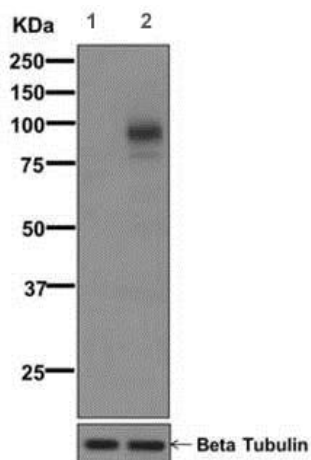
Application	Abreviews	Notes
<b>WB</b>		1/50000 - 1/20000. Predicted molecular weight: 90-120 kDa.
<b>IHC-P</b>		1/50 - 1/100. Perform heat mediated antigen retrieval before commencing with IHC staining protocol.
<b>IP</b>		1/10 - 1/100.

**Application notes** Is unsuitable for Flow Cyt or ICC/IF.

## Target

<b>Function</b>	Binds to and inhibits the transcriptional repressor ZBTB33, which may lead to activation of target genes of the Wnt signaling pathway (By similarity). May associate with and regulate the cell adhesion properties of both C- and E-cadherins. Implicated both in cell transformation by SRC and in ligand-induced receptor signaling through the EGF, PDGF, CSF-1 and ERBB2 receptors. Promotes GLIS2 C-terminal cleavage.
<b>Tissue specificity</b>	Expressed in vascular endothelium.
<b>Sequence similarities</b>	Belongs to the beta-catenin family. Contains 10 ARM repeats.
<b>Domain</b>	A possible nuclear localization signal exists in all isoforms where Asp-626--631-Arg are deleted.
<b>Post-translational modifications</b>	Phosphorylated by protein-tyrosine kinases. Dephosphorylated by PTPRJ.
<b>Cellular localization</b>	Cytoplasm. Nucleus. Cell membrane. Interaction with GLIS2 promotes nuclear translocation (By similarity). NANOS1 induces its translocation from sites of cell-cell contact to the cytoplasm.

## Images



Western blot - Anti-delta 1 Catenin/CAS (phospho Y280) antibody [EPR2384(2)] (ab173578)

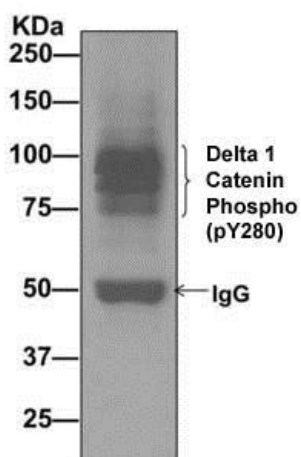
**All lanes :** Anti-delta 1 Catenin/CAS (phospho Y280) antibody [EPR2384(2)] (ab173578) at 1/50000 dilution

**Lane 1 :** Untreated A431 cell lysate

**Lane 2 :** Pervanadate treated A431 cell lysate

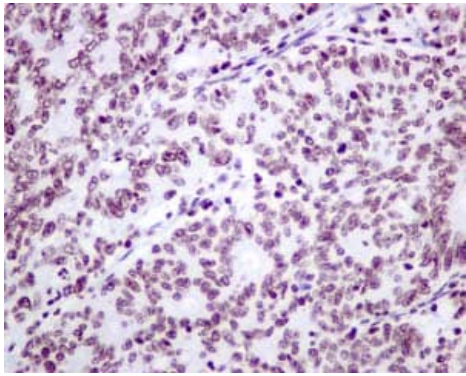
Lysates/proteins at 10 µg per lane.

**Predicted band size:** 90-120 kDa



Immunoprecipitation - Anti-delta 1 Catenin/CAS (phospho Y280) antibody [EPR2384(2)] (ab173578)

Western blot analysis on immunoprecipitation pellet from A431 cells treated with pervanadate lysate: ab173578 at 1/10 dilution immunoprecipitated delta 1 Catenin/CAS (phospho Y280).



Immunohistochemical analysis of paraffin-embedded Human gastric adenocarcinoma tissue labeling delta 1 Catenin/CAS (phospho Y280) with ab173578 at 1/50 dilution

Perform heat mediated antigen retrieval before commencing with IHC staining protocol.

Immunohistochemistry (Formalin/PFA-fixed paraffin-embedded sections) - Anti-delta 1 Catenin/CAS (phospho Y280) antibody [EPR2384(2)] (ab173578)

### Why choose a recombinant antibody?



**Research with confidence**  
Consistent and reproducible results



**Long-term and scalable supply**  
Recombinant technology



**Success from the first experiment**  
Confirmed specificity



**Ethical standards compliant**  
Animal-free production

Anti-delta 1 Catenin/CAS (phospho Y280) antibody [EPR2384(2)] (ab173578)

**Please note:** All products are "FOR RESEARCH USE ONLY. NOT FOR USE IN DIAGNOSTIC PROCEDURES"

### Our Abpromise to you: Quality guaranteed and expert technical support

- Replacement or refund for products not performing as stated on the datasheet
- Valid for 12 months from date of delivery
- Response to your inquiry within 24 hours
- We provide support in Chinese, English, French, German, Japanese and Spanish
- Extensive multi-media technical resources to help you
- We investigate all quality concerns to ensure our products perform to the highest standards

If the product does not perform as described on this datasheet, we will offer a refund or replacement. For full details of the Abpromise, please visit <https://www.abcam.com/abpromise> or contact our technical team.

### Terms and conditions

- 
- Guarantee only valid for products bought direct from Abcam or one of our authorized distributors