

## Product datasheet

# Anti-Dengue Virus E glycoprotein antibody [DE1] ab41349

[8 References](#) [2 Images](#)

### Overview

---

<b>Product name</b>	Anti-Dengue Virus E glycoprotein antibody [DE1]
<b>Description</b>	Mouse monoclonal [DE1] to Dengue Virus E glycoprotein
<b>Host species</b>	Mouse
<b>Specificity</b>	This antibody reacts with a conformational epitope on the envelope glycoprotein of Dengue Virus 1, 2, 3 and 4.
<b>Tested applications</b>	<b>Suitable for:</b> ICC/IF, ELISA, Dot blot <b>Unsuitable for:</b> WB
<b>Species reactivity</b>	<b>Reacts with:</b> Dengue virus 1, Dengue virus 2, Dengue virus 3, Dengue virus 4
<b>Immunogen</b>	Full length native protein purified from Dengue Virus 2 (16681) infected supernatant
<b>General notes</b>	<p>The Life Science industry has been in the grips of a reproducibility crisis for a number of years. Abcam is leading the way in addressing this with our range of recombinant monoclonal antibodies and knockout edited cell lines for gold-standard validation. Please check that this product meets your needs before purchasing.</p> <p>If you have any questions, special requirements or concerns, please send us an inquiry and/or contact our Support team ahead of purchase. Recommended alternatives for this product can be found below, along with publications, customer reviews and Q&amp;As</p>

### Properties

---

<b>Form</b>	Liquid
<b>Storage instructions</b>	Shipped at 4°C. Store at +4°C short term (1-2 weeks). Store at -20°C or -80°C. Avoid freeze / thaw cycle.
<b>Storage buffer</b>	Preservative: 0.1% Proclin 150 Constituents: 10% BSA, 89.9% RPMI 1640
<b>Purity</b>	Tissue culture supernatant
<b>Clonality</b>	Monoclonal
<b>Clone number</b>	DE1
<b>Isotype</b>	IgG2b
<b>Light chain type</b>	kappa

## Applications

**The Abpromise guarantee** Our **Abpromise guarantee** covers the use of ab41349 in the following tested applications. The application notes include recommended starting dilutions; optimal dilutions/concentrations should be determined by the end user.

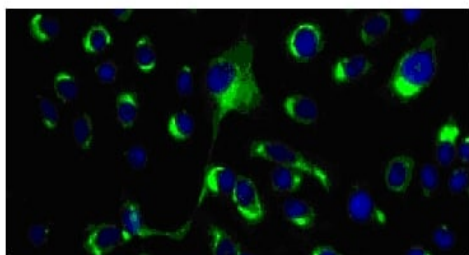
Application	Abreviews	Notes
ICC/IF		1/5 - 1/20.
ELISA		Use at an assay dependent concentration. This antibody has been used in ELISA for the detection of dengue IgM in patient serum samples.
Dot blot		Use at an assay dependent concentration.

**Application notes** Is unsuitable for WB.

## Target

**Relevance** Dengue virus E glycoprotein is thought to be essential for membrane fusion and is also involved in binding to cellular receptors. It is the primary antigen responsible for inducing the protective immune response.

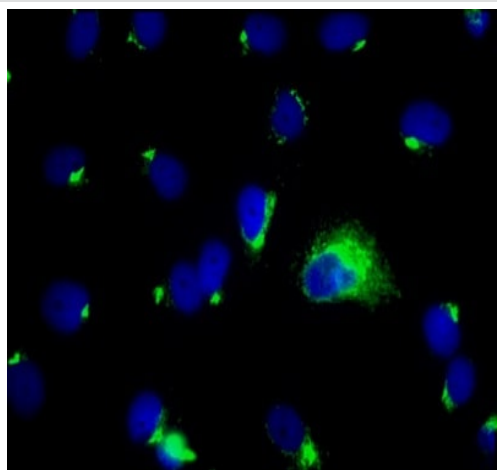
## Images



2006 Abcam

Dengue Virus 2 infected Vero cells stained with ab41349 antibody against Dengue Virus envelope glycoprotein E (green). Cell nuclei are blue.

Immunocytochemistry/ Immunofluorescence - Anti-Dengue Virus E glycoprotein antibody [DE1] (ab41349)



Dengue Virus 2 infected Vero cells stained according to protocol with ab41349 antibody against Dengue Virus envelope glycoprotein E (green). Cell nuclei are blue.

Immunocytochemistry/ Immunofluorescence - Anti-Dengue Virus E glycoprotein antibody [DE1] (ab41349)

**Please note:** All products are "FOR RESEARCH USE ONLY. NOT FOR USE IN DIAGNOSTIC PROCEDURES"

### Our Abpromise to you: Quality guaranteed and expert technical support

---

- Replacement or refund for products not performing as stated on the datasheet
- Valid for 12 months from date of delivery
- Response to your inquiry within 24 hours
- We provide support in Chinese, English, French, German, Japanese and Spanish
- Extensive multi-media technical resources to help you
- We investigate all quality concerns to ensure our products perform to the highest standards

If the product does not perform as described on this datasheet, we will offer a refund or replacement. For full details of the Abpromise, please visit <https://www.abcam.com/abpromise> or contact our technical team.

### Terms and conditions

---

- Guarantee only valid for products bought direct from Abcam or one of our authorized distributors