

## Product datasheet

# Anti-DEPP antibody ab204429

2 Images

### Overview

---

<b>Product name</b>	Anti-DEPP antibody
<b>Description</b>	Rabbit polyclonal to DEPP
<b>Host species</b>	Rabbit
<b>Tested applications</b>	<b>Suitable for:</b> ICC/IF, IHC-P
<b>Species reactivity</b>	<b>Reacts with:</b> Human
<b>Immunogen</b>	Recombinant fragment corresponding to Human DEPP aa 1-150. Database link: <a href="#">Q9NTK1</a> <a href="#">Run BLAST with</a> <a href="#">Run BLAST with</a>
<b>Positive control</b>	Human urinary bladder tissue; U-2 OS cells.
<b>General notes</b>	<p>The Life Science industry has been in the grips of a reproducibility crisis for a number of years. Abcam is leading the way in addressing this with our range of recombinant monoclonal antibodies and knockout edited cell lines for gold-standard validation. Please check that this product meets your needs before purchasing.</p> <p>If you have any questions, special requirements or concerns, please send us an inquiry and/or contact our Support team ahead of purchase. Recommended alternatives for this product can be found below, along with publications, customer reviews and Q&amp;As</p>

### Properties

---

<b>Form</b>	Liquid
<b>Storage instructions</b>	Shipped at 4°C. Store at +4°C short term (1-2 weeks). Upon delivery aliquot. Store at -20°C long term. Avoid freeze / thaw cycle.
<b>Storage buffer</b>	pH: 7.20 Preservative: 0.02% Sodium azide Constituents: 40% Glycerol (glycerin, glycerine), 59% PBS
<b>Purity</b>	Immunogen affinity purified
<b>Clonality</b>	Polyclonal
<b>Isotype</b>	IgG

### Applications

---

## The Abpromise guarantee

Our **Abpromise guarantee** covers the use of ab204429 in the following tested applications.

The application notes include recommended starting dilutions; optimal dilutions/concentrations should be determined by the end user.

Application	Abreviews	Notes
ICC/IF		Use a concentration of 0.25 - 2 µg/ml.
IHC-P		1/200 - 1/500. Perform heat mediated antigen retrieval with citrate buffer pH 6 before commencing with IHC staining protocol.

## Target

### Function

May play a role in autophagy.

### Tissue specificity

Expressed in various tissues, including pancreas, placenta, ovary, testis and kidney.

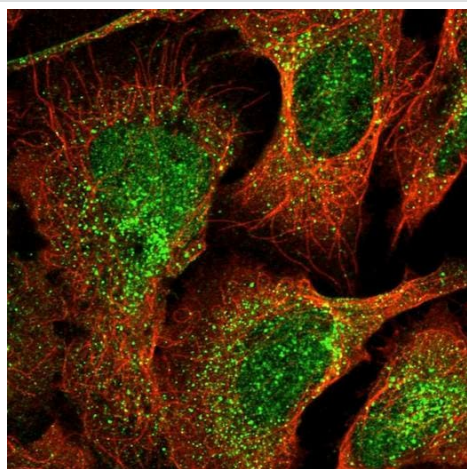
### Developmental stage

High levels in first trimester deciduas. Higher levels in the endometria during secretory phase than the proliferative phase, especially after the mid-secretory phase.

### Cellular localization

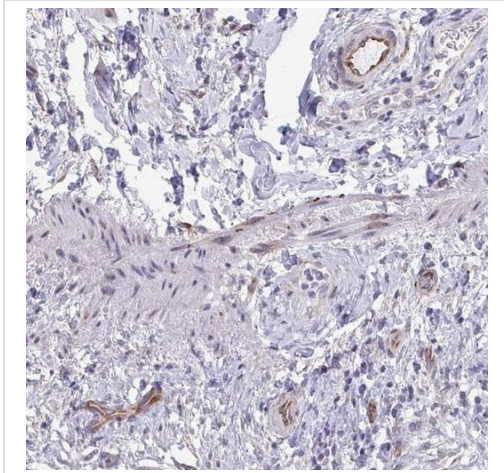
Cytoplasm. May localize to aggresomes.

## Images



Immunofluorescent analysis of formalin fixed, Triton X-100 permeabilized U-2 OS cells labeling DEPP with ab204429 at 4 µg/ml (green).

Immunocytochemistry/ Immunofluorescence - Anti-DEPP antibody (ab204429)



Immunohistochemical analysis of formalin-fixed paraffin-embedded Human urinary bladder tissue labeling DEPP with ab204429 at 1/200.

Immunohistochemistry (Formalin/PFA-fixed paraffin-embedded sections) - Anti-DEPP antibody (ab204429)

**Please note:** All products are "FOR RESEARCH USE ONLY. NOT FOR USE IN DIAGNOSTIC PROCEDURES"

### **Our Abpromise to you: Quality guaranteed and expert technical support**

---

- Replacement or refund for products not performing as stated on the datasheet
- Valid for 12 months from date of delivery
- Response to your inquiry within 24 hours
  
- We provide support in Chinese, English, French, German, Japanese and Spanish
- Extensive multi-media technical resources to help you
- We investigate all quality concerns to ensure our products perform to the highest standards

If the product does not perform as described on this datasheet, we will offer a refund or replacement. For full details of the Abpromise, please visit <https://www.abcam.com/abpromise> or contact our technical team.

### **Terms and conditions**

---

- Guarantee only valid for products bought direct from Abcam or one of our authorized distributors