




## Product datasheet

### Anti-Deptor antibody ab244395

5 Images

#### Overview

<b>Product name</b>	Anti-Deptor antibody
<b>Description</b>	Rabbit polyclonal to Deptor
<b>Host species</b>	Rabbit
<b>Tested applications</b>	<b>Suitable for:</b> WB, ICC/IF, IHC-P
<b>Species reactivity</b>	<b>Reacts with:</b> Human <b>Predicted to work with:</b> Mouse 
<b>Immunogen</b>	Recombinant fragment corresponding to Human Deptor aa 200-350. Database link: <a href="#">Q8TB45</a>  <a href="#">Run BLAST with</a>  <a href="#">Run BLAST with</a>
<b>Positive control</b>	ICC/IF: MCF7 cells. WB: Deptor overexpression HEK-293T cell lysate. IHC-P: Human skeletal muscle, fallopian tube and small intestine tissue.
<b>General notes</b>	<p>The Life Science industry has been in the grips of a reproducibility crisis for a number of years. Abcam is leading the way in addressing this with our range of recombinant monoclonal antibodies and knockout edited cell lines for gold-standard validation. Please check that this product meets your needs before purchasing.</p> <p>If you have any questions, special requirements or concerns, please send us an inquiry and/or contact our Support team ahead of purchase. Recommended alternatives for this product can be found below, along with publications, customer reviews and Q&amp;As</p>

#### Properties

<b>Form</b>	Liquid
<b>Storage instructions</b>	Shipped at 4°C. Store at +4°C short term (1-2 weeks). Upon delivery aliquot. Store at -20°C long term. Avoid freeze / thaw cycle.
<b>Storage buffer</b>	pH: 7.20 Preservative: 0.02% Sodium azide Constituents: PBS, 40% Glycerol (glycerin, glycerine)
<b>Purity</b>	Immunogen affinity purified
<b>Clonality</b>	Polyclonal
<b>Isotype</b>	IgG

## Applications

### The Abpromise guarantee

Our **Abpromise guarantee** covers the use of ab244395 in the following tested applications.

The application notes include recommended starting dilutions; optimal dilutions/concentrations should be determined by the end user.

Application	Abreviews	Notes
WB		Use a concentration of 0.04 - 0.4 µg/ml.
ICC/IF		Use a concentration of 0.25 - 2 µg/ml. Fixation/Permeabilization: PFA/Triton X-100.
IHC-P		1/50 - 1/200. Perform heat mediated antigen retrieval with citrate buffer pH 6 before commencing with IHC staining protocol.

## Target

### Function

Negative regulator of the mTORC1 and mTORC2 signaling pathways. Inhibits the kinase activity of both complexes.

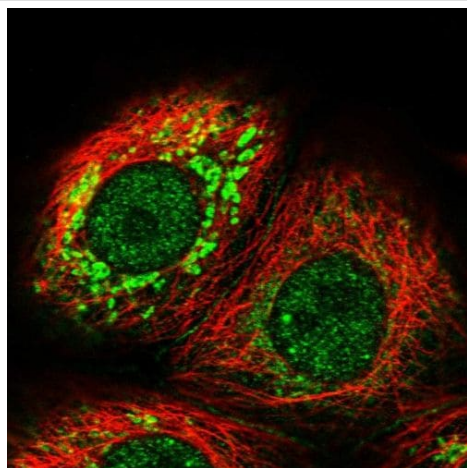
### Sequence similarities

Contains 2 DEP domains.  
Contains 1 PDZ (DHR) domain.

### Post-translational modifications

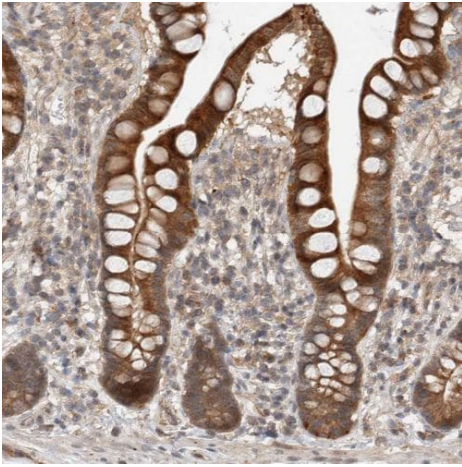
Phosphorylated. Phosphorylation weakens interaction with MTOR within mTORC1 and mTORC2.

## Images



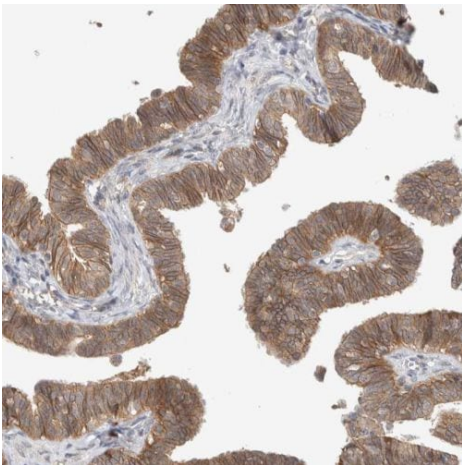
PFA-fixed, Triton X-100 permeabilized MCF7 (human breast adenocarcinoma cell line) cells stained for Deptor (green) using ab244395 at 4 µg/ml in ICC/IF.

Immunocytochemistry/ Immunofluorescence - Anti-Deptor antibody (ab244395)



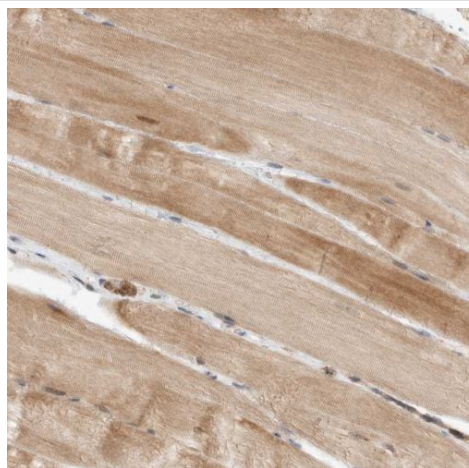
Immunohistochemistry (Formalin/PFA-fixed paraffin-embedded sections) - Anti-Depror antibody (ab244395)

Paraffin-embedded human small intestine tissue stained for Depror using ab244395 at 1/50 dilution in immunohistochemical analysis.



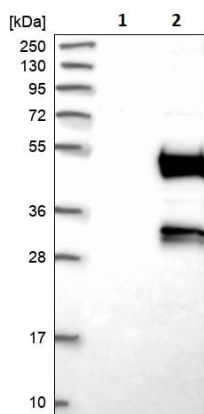
Immunohistochemistry (Formalin/PFA-fixed paraffin-embedded sections) - Anti-Depror antibody (ab244395)

Paraffin-embedded human fallopian tube tissue stained for Depror using ab244395 at 1/50 dilution in immunohistochemical analysis.



Paraffin-embedded human skeletal muscle tissue stained for Deptor using ab244395 at 1/50 dilution in immunohistochemical analysis.

Immunohistochemistry (Formalin/PFA-fixed paraffin-embedded sections) - Anti-Deptor antibody (ab244395)



**All lanes :** Anti-Deptor antibody (ab244395) at 0.4 µg/ml

**Lane 1 :** Vector only transfected HEK-293T (Human epithelial cell line from embryonic kidney transformed with large T antigen) lysate

**Lane 2 :** Deptor overexpression HEK-293T cell lysate

Western blot - Anti-Deptor antibody (ab244395)

**Please note:** All products are "FOR RESEARCH USE ONLY. NOT FOR USE IN DIAGNOSTIC PROCEDURES"

**Our Abpromise to you: Quality guaranteed and expert technical support**

- Replacement or refund for products not performing as stated on the datasheet

- Valid for 12 months from date of delivery
- Response to your inquiry within 24 hours
- We provide support in Chinese, English, French, German, Japanese and Spanish
- Extensive multi-media technical resources to help you
- We investigate all quality concerns to ensure our products perform to the highest standards

If the product does not perform as described on this datasheet, we will offer a refund or replacement. For full details of the Abpromise, please visit <https://www.abcam.com/abpromise> or contact our technical team.

#### **Terms and conditions**

---

- Guarantee only valid for products bought direct from Abcam or one of our authorized distributors