


Product datasheet

Anti-Desmoplakin antibody [EPR4383(2)] ab109445

Recombinant RabMAb

★★★★☆ [2 Abreviews](#) [9 References](#) [4 Images](#)

Overview

Product name	Anti-Desmoplakin antibody [EPR4383(2)]
Description	Rabbit monoclonal [EPR4383(2)] to Desmoplakin
Host species	Rabbit
Tested applications	Suitable for: Flow Cyt (Intra), WB, ICC/IF
Species reactivity	Reacts with: Human Predicted to work with: Rat 
Immunogen	Synthetic peptide. This information is proprietary to Abcam and/or its suppliers.
Positive control	WB: A431, HACAT and BXPC-3 cell lysates. ICC/IF: A431 cells. Flow Cyt (intra): A431 cells.
General notes	<p>This product is a recombinant monoclonal antibody, which offers several advantages including:</p> <ul style="list-style-type: none"> - High batch-to-batch consistency and reproducibility - Improved sensitivity and specificity - Long-term security of supply - Animal-free production <p>For more information see here.</p> <p>Our RabMAb[®] technology is a patented hybridoma-based technology for making rabbit monoclonal antibodies. For details on our patents, please refer to RabMAb[®] patents.</p> <p>Mouse: We have preliminary internal testing data to indicate this antibody may not react with this species. Please contact us for more information.</p>

Properties

Form	Liquid
Storage instructions	Shipped at 4°C. Store at -20°C. Stable for 12 months at -20°C.
Storage buffer	pH: 7.20 Preservative: 0.05% Sodium azide Constituents: 0.1% BSA, 40% Glycerol (glycerin, glycerine), 9.85% Tris glycine, 50% Tissue culture supernatant
Purity	Protein A purified
Clonality	Monoclonal

Clone number EPR4383(2)
Isotype IgG

Applications

The Abpromise guarantee Our **Abpromise guarantee** covers the use of ab109445 in the following tested applications. The application notes include recommended starting dilutions; optimal dilutions/concentrations should be determined by the end user.

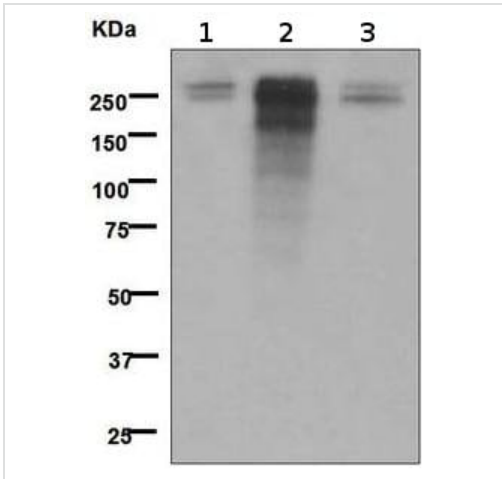
Application	Abreviews	Notes
Flow Cyt (Intra)		1/250.
WB	★★★★★ (2)	1/1000 - 1/10000. Predicted molecular weight: 332 kDa.
ICC/IF		1/1000.

Target

Relevance Desmosomes are the most common type of intercellular junction in vertebrate epithelial cells. They are characterized by 2 forms of interaction with other cellular structures. First, they form membrane anchorage sites for intermediate-size filaments, which are seen as electron-dense plaques evident beneath the plasma membrane. Second, a specific membrane core domain interacts with a corresponding domain of the plasma membrane of an adjacent cell, apparently mediating intercellular adhesion in a stable way. The desmosome intermediate filament complex is thought to impart tensile strength and resilience to the epithelium. Desmosomal proteins can be divided into 2 groups based on whether they fractionate with the urea-insoluble 'core' or the urea-soluble 'plaque' components. Desmoglein is, for example, a protein of the core. The main proteins of the plaque comprise the desmoplakins and plakoglobin.

Cellular localization Cell junction, desmosome. Cytoplasm, cytoskeleton.

Images



Western blot - Anti-Desmoplakin antibody [EPR4383(2)] (ab109445)

All lanes : Anti-Desmoplakin antibody [EPR4383(2)] (ab109445) at 1/1000 dilution

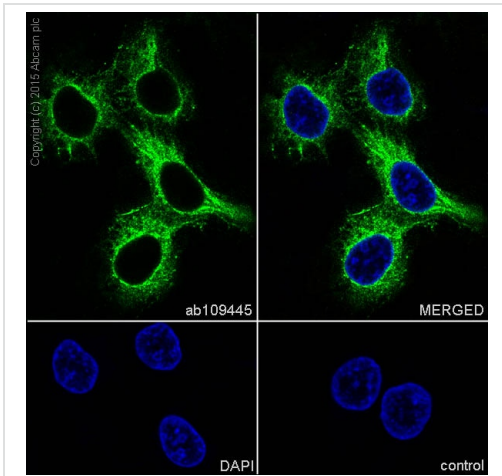
Lane 1 : A431 cell lysate

Lane 2 : HACAT cell lysate

Lane 3 : BXP3-3 cell lysate

Lysates/proteins at 10 µg per lane.

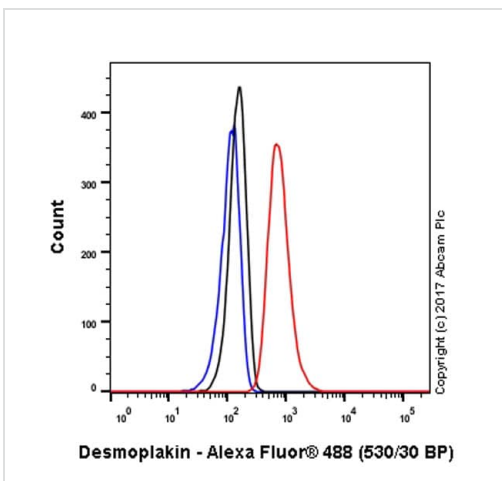
Predicted band size: 332 kDa



Immunocytochemistry/ Immunofluorescence - Anti-Desmoplakin antibody [EPR4383(2)] (ab109445)

Immunocytochemistry/Immunofluorescence analysis of A431 cells labelling Desmoplakin with ab109445 at 1/1000. Cells were fixed with 100% methanol. **ab150077**, an Alexa Fluor[®] 488-conjugated goat anti-rabbit IgG (1/1000) was used as the secondary antibody. Control: PBS only.

Nuclear counter stain: DAPI.



Flow Cytometry (Intracellular) - Anti-Desmoplakin antibody [EPR4383(2)] (ab109445)

Intracellular Flow Cytometry analysis of A431 (Human epidermoid carcinoma epithelial cell) cells labeling Desmoplakin (red) with ab109445 at a 1/250 dilution. Cells were fixed with 4% paraformaldehyde and permeabilized with 90% methanol. A goat anti-rabbit IgG (Alexa Fluor[®] 488) (**ab150077**) was used as the secondary antibody at a 1/2000 dilution. Black - Rabbit monoclonal IgG (Black) (**ab172730**). Blue (unlabeled control) - Cell without incubation with primary antibody and secondary antibody (Blue).

Why choose a recombinant antibody?



Research with confidence
Consistent and reproducible results



Long-term and scalable supply
Recombinant technology



Success from the first experiment
Confirmed specificity



Ethical standards compliant
Animal-free production

Anti-Desmoplakin antibody [EPR4383(2)]
(ab109445)

Please note: All products are "FOR RESEARCH USE ONLY. NOT FOR USE IN DIAGNOSTIC PROCEDURES"

Our Abpromise to you: Quality guaranteed and expert technical support

- Replacement or refund for products not performing as stated on the datasheet
- Valid for 12 months from date of delivery
- Response to your inquiry within 24 hours
- We provide support in Chinese, English, French, German, Japanese and Spanish
- Extensive multi-media technical resources to help you
- We investigate all quality concerns to ensure our products perform to the highest standards

If the product does not perform as described on this datasheet, we will offer a refund or replacement. For full details of the Abpromise, please visit <https://www.abcam.com/abpromise> or contact our technical team.

Terms and conditions

- Guarantee only valid for products bought direct from Abcam or one of our authorized distributors