




Product datasheet

Anti-Desmuslin/SYN antibody ab214316

[2 Images](#)

Overview

Product name	Anti-Desmuslin/SYN antibody
Description	Rabbit polyclonal to Desmuslin/SYN
Host species	Rabbit
Tested applications	Suitable for: IHC-P
Species reactivity	Reacts with: Rat Predicted to work with: Mouse, Human 
Immunogen	<p>Synthetic peptide within Human Desmuslin/SYN aa 500-600 conjugated to keyhole limpet haemocyanin. The exact immunogen sequence used to generate this antibody is proprietary information. If additional detail on the immunogen is needed to determine the suitability of the antibody for your needs, please <u>contact</u> our Scientific Support team to discuss your requirements.</p> <p>Database link: <u>O15061</u></p> <div>  Run BLAST with  Run BLAST with </div>
Positive control	Rat heart and skeletal tissues.
General notes	<p>The Life Science industry has been in the grips of a reproducibility crisis for a number of years. Abcam is leading the way in addressing this with our range of recombinant monoclonal antibodies and knockout edited cell lines for gold-standard validation. Please check that this product meets your needs before purchasing.</p> <p>If you have any questions, special requirements or concerns, please send us an inquiry and/or contact our Support team ahead of purchase. Recommended alternatives for this product can be found below, along with publications, customer reviews and Q&As</p>

Properties

Form	Liquid
Storage instructions	Shipped at 4°C. Store at +4°C short term (1-2 weeks). Upon delivery aliquot. Store at -20°C long term. Avoid freeze / thaw cycle.
Storage buffer	<p>pH: 7.40</p> <p>Preservative: 0.02% Proclin 300</p> <p>Constituents: 50% Glycerol (glycerin, glycerine), 1% BSA, 48.98% TBS, 1X</p>
Purity	Protein A purified

Clonality	Polyclonal
Isotype	IgG

Applications

The Abpromise guarantee Our **Abpromise guarantee** covers the use of ab214316 in the following tested applications.

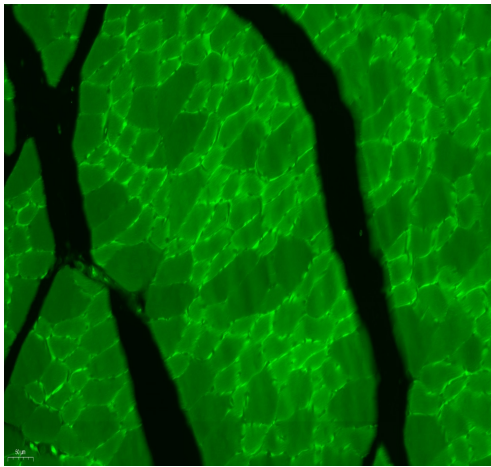
The application notes include recommended starting dilutions; optimal dilutions/concentrations should be determined by the end user.

Application	Abreviews	Notes
IHC-P		1/100 - 1/500. Perform heat mediated antigen retrieval with citrate buffer pH 6 before commencing with IHC staining protocol.

Target

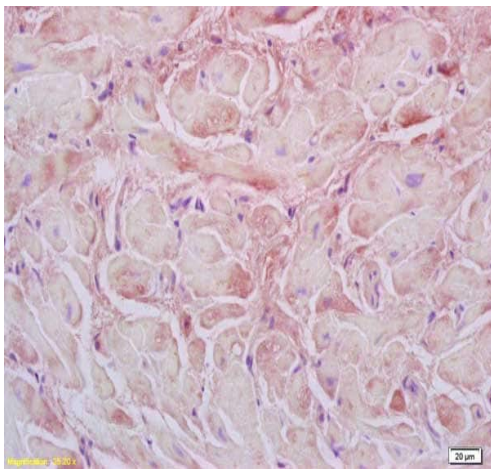
Function	Type-VI intermediate filament (IF) which plays an important cytoskeletal role within the muscle cell cytoskeleton. It forms heteropolymeric IFs with desmin and/or vimentin, and via its interaction with cytoskeletal proteins alpha-dystrobrevin, dystrophin, talin-1, utrophin and vinculin, is able to link these heteropolymeric IFs to adherens-type junctions, such as to the costameres, neuromuscular junctions, and myotendinous junctions within striated muscle cells.
Tissue specificity	Isoform 2 is strongly detected in adult heart, fetal skeletal muscles and fetal heart. Isoform 1 is weakly detected in fetal heart and also in fetal skeletal muscle. Isoform 1 and isoform 2 are detected in adult bladder (at protein level). The mRNA is predominantly expressed in heart and muscle with some expression in brain which may be due to tissue-specific isoforms.
Sequence similarities	Belongs to the intermediate filament family.
Developmental stage	In lens, first detected at 16 weeks when expression is weakly and uniformly distributed. Subsequently, expression becomes much stronger in the epithelium of the anterior part at 25 weeks and later. In retina, weakly expressed at 15 weeks in the nerve fiber and ganglion cell layers (NFL and GCL). From 25 weeks onwards, much stronger expression is observed in the endfeet of Mueller cells, the NFL, and GCL, and much lower expression is observed in a minor subpopulation of cells in the inner cell layer (INL). At 30 and 36 weeks, expression remains in the neural retina, and subsequently becomes stronger in the NFL, GCL, and INL and is decreased in Mueller cells. At 36 weeks, also expressed at the external border of the outer nuclear layer (ONL) (at protein level).
Cellular localization	Cytoplasm, cytoskeleton. Cell junction, adherens junction. There are at least two distinct SYNM subpopulations, one in which SYMN interacts with DES within the Z-lines, and another in which it interacts with both DTNA and DES at the costamere.

Images



Immunohistochemical analysis of formalin-fixed, paraffin-embedded rat brain tissue labeling Desmuslin/SYN with ab214316 at 1/4200 dilution, followed by FITC conjugated secondary antibody.

Immunohistochemistry (Formalin/PFA-fixed paraffin-embedded sections) - Anti-Desmuslin/SYN antibody (ab214316)



Immunohistochemical analysis of formalin-fixed, paraffin-embedded rat heart tissue labeling Desmuslin/SYN with ab214316 at 1/200 dilution, followed by conjugation to the secondary antibody and DAB staining.

Immunohistochemistry (Formalin/PFA-fixed paraffin-embedded sections) - Anti-Desmuslin/SYN antibody (ab214316)

Please note: All products are "FOR RESEARCH USE ONLY. NOT FOR USE IN DIAGNOSTIC PROCEDURES"

Our Abpromise to you: Quality guaranteed and expert technical support

- Replacement or refund for products not performing as stated on the datasheet
- Valid for 12 months from date of delivery
- Response to your inquiry within 24 hours

- We provide support in Chinese, English, French, German, Japanese and Spanish
- Extensive multi-media technical resources to help you
- We investigate all quality concerns to ensure our products perform to the highest standards

If the product does not perform as described on this datasheet, we will offer a refund or replacement. For full details of the Abpromise, please visit <https://www.abcam.com/abpromise> or contact our technical team.

Terms and conditions

- Guarantee only valid for products bought direct from Abcam or one of our authorized distributors