

## Product datasheet

### Anti-DGKE antibody [EPR7847] ab128949

Recombinant RabMAb

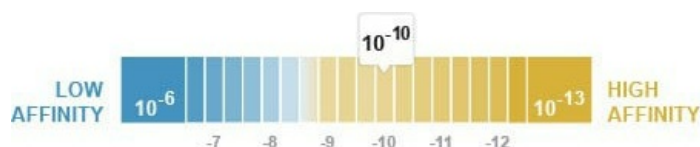
4 Images

#### Overview

Product name	Anti-DGKE antibody [EPR7847]
Description	Rabbit monoclonal [EPR7847] to DGKE
Host species	Rabbit
Tested applications	<b>Suitable for:</b> WB <b>Unsuitable for:</b> Flow Cyt, IHC-P or IP
Species reactivity	<b>Reacts with:</b> Human
Immunogen	Synthetic peptide. This information is proprietary to Abcam and/or its suppliers.
Positive control	293T, HeLa and K562 cell lysates
General notes	<p>This product is a recombinant monoclonal antibody, which offers several advantages including:</p> <ul style="list-style-type: none"> <li>- High batch-to-batch consistency and reproducibility</li> <li>- Improved sensitivity and specificity</li> <li>- Long-term security of supply</li> <li>- Animal-free production</li> </ul> <p>For more information <a href="#">see here</a>.</p> <p>Our RabMAb<sup>®</sup> technology is a patented hybridoma-based technology for making rabbit monoclonal antibodies. For details on our patents, please refer to <a href="#">RabMAb<sup>®</sup> patents</a>.</p> <p>Mouse, Rat: We have preliminary internal testing data to indicate this antibody may not react with these species. Please contact us for more information.</p>

#### Properties

Form	Liquid
Storage instructions	Shipped at 4°C. Store at -20°C. Stable for 12 months at -20°C.
Dissociation constant (K <sub>D</sub> )	K <sub>D</sub> = 1.09 x 10 <sup>-10</sup> M



[Learn more about K<sub>D</sub>](#)

<b>Storage buffer</b>	pH: 7.20 Preservative: 0.01% Sodium azide Constituents: 59% PBS, 40% Glycerol (glycerin, glycerine), 0.5% BSA
<b>Purity</b>	Protein A purified
<b>Clonality</b>	Monoclonal
<b>Clone number</b>	EPR7847
<b>Isotype</b>	IgG

## Applications

**The Abpromise guarantee** Our **Abpromise guarantee** covers the use of ab128949 in the following tested applications. The application notes include recommended starting dilutions; optimal dilutions/concentrations should be determined by the end user.

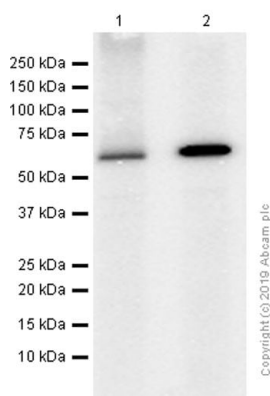
Application	Abreviews	Notes
<b>WB</b>		1/1000 - 1/10000. Detects a band of approximately 64 kDa (predicted molecular weight: 64 kDa).

**Application notes** Is unsuitable for Flow Cyt, IHC-P or IP.

## Target

<b>Function</b>	Highly selective for arachidonate-containing species of diacylglycerol (DAG). May terminate signals transmitted through arachidonoyl-DAG or may contribute to the synthesis of phospholipids with defined fatty acid composition.
<b>Tissue specificity</b>	Expressed predominantly in testis.
<b>Sequence similarities</b>	Belongs to the eukaryotic diacylglycerol kinase family. Contains 1 DAGKc domain. Contains 2 phorbol-ester/DAG-type zinc fingers.
<b>Cellular localization</b>	Membrane.

## Images



Western blot - Anti-DGKE antibody [EPR7847]  
(ab128949)

**All lanes :** Anti-DGKE antibody [EPR7847] (ab128949) at 1/1000 dilution (Purified)

**Lane 1 :** HEK-293 (Human embryonic kidney epithelial cell) whole cell lysates prepared in RIPA lysis method

**Lane 2 :** HEK-293 (Human embryonic kidney epithelial cell) whole cell lysates prepared in RIPA lysis method at 15 µg

#### Secondary

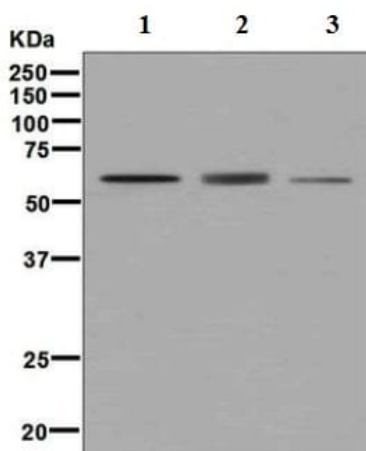
**All lanes :** Goat Anti-Rabbit IgG H&L (HRP) ([ab97051](#)) at 1/20000 dilution

**Predicted band size:** 64 kDa

**Observed band size:** 64 kDa

Blocking/Diluting Buffer and concentration: 5% NFDM/TBST

We recommend to use 1%SDS Hot lysis prepare method to get desired Western Blot results.



Western blot - Anti-DGKE antibody [EPR7847]  
(ab128949)

**All lanes :** Anti-DGKE antibody [EPR7847] (ab128949) at 1/1000 dilution

**Lane 1 :** 293T cell lysate

**Lane 2 :** HeLa cell lysate

**Lane 3 :** K562 cell lysate

Lysates/proteins at 10 µg per lane.

#### Secondary

**All lanes :** HRP labelled goat anti-rabbit at 1/2000 dilution

**Predicted band size:** 64 kDa

**Observed band size:** 64 kDa

The cell lysates were prepared in 1%SDS Hot lysis method.





OI-RD Scanning - Anti-DGKE antibody [EPR7847]  
(ab128949)

Equilibrium disassociation constant ( $K_D$ )

Learn more about  $K_D$

**[Click here to learn more about K<sub>D</sub>](#)**

Why choose a recombinant antibody?

 <p><b>Research with confidence</b> Consistent and reproducible results</p>	 <p><b>Long-term and scalable supply</b> Recombinant technology</p>
 <p><b>Success from the first experiment</b> Confirmed specificity</p>	 <p><b>Ethical standards compliant</b> Animal-free production</p>

Anti-DGKE antibody [EPR7847] (ab128949)

**Please note:** All products are "FOR RESEARCH USE ONLY. NOT FOR USE IN DIAGNOSTIC PROCEDURES"

### **Our Abpromise to you: Quality guaranteed and expert technical support**

---

- Replacement or refund for products not performing as stated on the datasheet
- Valid for 12 months from date of delivery
- Response to your inquiry within 24 hours
- We provide support in Chinese, English, French, German, Japanese and Spanish
- Extensive multi-media technical resources to help you
- We investigate all quality concerns to ensure our products perform to the highest standards

If the product does not perform as described on this datasheet, we will offer a refund or replacement. For full details of the Abpromise, please visit <https://www.abcam.com/abpromise> or contact our technical team.

### **Terms and conditions**

---

- Guarantee only valid for products bought direct from Abcam or one of our authorized distributors