


Product datasheet

Anti-DHHC-20 antibody ab110478

[1 References](#) [1 Image](#)

Overview

Product name	Anti-DHHC-20 antibody
Description	Rabbit polyclonal to DHHC-20
Host species	Rabbit
Tested applications	Suitable for: WB
Species reactivity	Reacts with: Human Predicted to work with: Mouse, Rat 
Immunogen	Synthetic peptide corresponding to Human DHHC-20 (internal sequence).
Positive control	Extracts from COLO, MCF7 and Jurkat cells
General notes	<p>The Life Science industry has been in the grips of a reproducibility crisis for a number of years. Abcam is leading the way in addressing this with our range of recombinant monoclonal antibodies and knockout edited cell lines for gold-standard validation. Please check that this product meets your needs before purchasing.</p> <p>If you have any questions, special requirements or concerns, please send us an inquiry and/or contact our Support team ahead of purchase. Recommended alternatives for this product can be found below, along with publications, customer reviews and Q&As</p>

Properties

Form	Liquid
Storage instructions	Shipped at 4°C. Store at -20°C. Stable for 12 months at -20°C.
Storage buffer	pH: 7.40 Preservative: 0.02% Sodium azide Constituents: PBS, 0.88% Sodium chloride, 50% Glycerol (glycerin, glycerine) PBS is without Mg ²⁺ and Ca ²⁺ .
Purity	Immunogen affinity purified
Purification notes	ab110478 was affinity purified from rabbit antiserum by affinity chromatography using epitope-specific immunogen.
Clonality	Polyclonal
Isotype	IgG

Applications

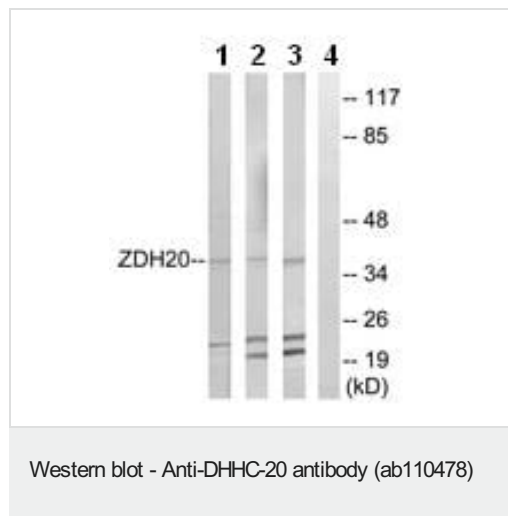
The Abpromise guarantee Our **Abpromise guarantee** covers the use of ab110478 in the following tested applications. The application notes include recommended starting dilutions; optimal dilutions/concentrations should be determined by the end user.

Application	Abreviews	Notes
WB		1/500 - 1/1000. Predicted molecular weight: 42 kDa.

Target

Sequence similarities	Belongs to the DHHC palmitoyltransferase family. Contains 1 DHHC-type zinc finger.
Domain	The DHHC domain is required for palmitoyltransferase activity.
Post-translational modifications	Phosphorylated upon DNA damage, probably by ATM or ATR.
Cellular localization	Membrane.

Images



All lanes : Anti-DHHC-20 antibody (ab110478) at 1/500 dilution

Lane 1 : Extracts from COLO cells

Lane 2 : Extracts from MCF7 cells

Lane 3 : Extracts from Jurkat cells

Lane 4 : Extracts from Jurkat cells with immunized peptide at 10 µg

Lysates/proteins at 30 µg per lane.

Predicted band size: 42 kDa

Please note: All products are "FOR RESEARCH USE ONLY. NOT FOR USE IN DIAGNOSTIC PROCEDURES"

Our Abpromise to you: Quality guaranteed and expert technical support

- Replacement or refund for products not performing as stated on the datasheet
- Valid for 12 months from date of delivery
- Response to your inquiry within 24 hours
- We provide support in Chinese, English, French, German, Japanese and Spanish
- Extensive multi-media technical resources to help you
- We investigate all quality concerns to ensure our products perform to the highest standards

If the product does not perform as described on this datasheet, we will offer a refund or replacement. For full details of the Abpromise, please visit <https://www.abcam.com/abpromise> or contact our technical team.

Terms and conditions

- Guarantee only valid for products bought direct from Abcam or one of our authorized distributors