




## Product datasheet

### Anti-DHX35 antibody ab235366

3 Images

#### Overview

<b>Product name</b>	Anti-DHX35 antibody
<b>Description</b>	Rabbit polyclonal to DHX35
<b>Host species</b>	Rabbit
<b>Tested applications</b>	<b>Suitable for:</b> WB, IHC-P
<b>Species reactivity</b>	<b>Reacts with:</b> Mouse, Human <b>Predicted to work with:</b> Orangutan 
<b>Immunogen</b>	Recombinant fragment corresponding to Human DHX35 aa 1-300. Database link: <a href="#">Q9H5Z1</a>  <a href="#">Run BLAST with</a>  <a href="#">Run BLAST with</a>
<b>Positive control</b>	WB: Mouse kidney and liver lysate; K562 and HeLa cell lysates. IHC-P: Human brain and testis tissue.
<b>General notes</b>	<p>The Life Science industry has been in the grips of a reproducibility crisis for a number of years. Abcam is leading the way in addressing this with our range of recombinant monoclonal antibodies and knockout edited cell lines for gold-standard validation. Please check that this product meets your needs before purchasing.</p> <p>If you have any questions, special requirements or concerns, please send us an inquiry and/or contact our Support team ahead of purchase. Recommended alternatives for this product can be found below, along with publications, customer reviews and Q&amp;As</p>

#### Properties

<b>Form</b>	Liquid
<b>Storage instructions</b>	Shipped at 4°C. Store at +4°C short term (1-2 weeks). Upon delivery aliquot. Store at -20°C long term. Avoid freeze / thaw cycle.
<b>Storage buffer</b>	pH: 7.40 Preservative: 0.03% Proclin 300 Constituents: PBS, 50% Glycerol (glycerin, glycerine)
<b>Purity</b>	Protein G purified
<b>Purification notes</b>	Purity >95%.
<b>Clonality</b>	Polyclonal
<b>Isotype</b>	IgG

## Applications

**The Abpromise guarantee** Our **Abpromise guarantee** covers the use of ab235366 in the following tested applications. The application notes include recommended starting dilutions; optimal dilutions/concentrations should be determined by the end user.

Application	Abreviews	Notes
WB		1/1000 - 1/5000. Predicted molecular weight: 79 kDa.
IHC-P		1/20 - 1/200.

## Target

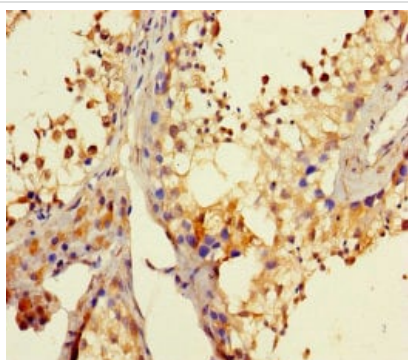
### Relevance

DEAD box proteins characterized by the conserved motif Asp-Glu-Ala-Asp (DEAD), are putative RNA helicases. They are implicated in a number of cellular processes involving alteration of RNA secondary structure such as translation initiation, nuclear and mitochondrial splicing, and ribosome and spliceosome assembly. Based on their distribution patterns, some members of the DEAD box protein family are believed to be involved in embryogenesis, spermatogenesis, and cellular growth and division. The function of DHX35 which is a member of this family, has not been determined. DEAD box proteins characterized by the conserved motif Asp-Glu-Ala-Asp (DEAD), are putative RNA helicases. They are implicated in a number of cellular processes involving alteration of RNA secondary structure such as translation initiation, nuclear and mitochondrial splicing, and ribosome and spliceosome assembly. Based on their distribution patterns, some members of the DEAD box protein family are believed to be involved in embryogenesis, spermatogenesis, and cellular growth and division. The function of this gene product which is a member of this family, has not been determined.

### Cellular localization

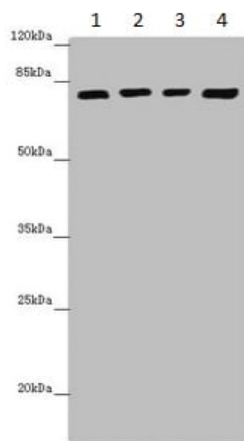
Spliceosomal complex

## Images



Paraffin-embedded human testis tissue stained for DHX35 using ab235366 at 1/100 dilution in immunohistochemical analysis.

Immunohistochemistry (Formalin/PFA-fixed paraffin-embedded sections) - Anti-DHX35 antibody (ab235366)



Western blot - Anti-DHX35 antibody (ab235366)

**All lanes :** Anti-DHX35 antibody (ab235366) at 1/1000 dilution

**Lane 1 :** Mouse kidney lysate

**Lane 2 :** Mouse liver lysate

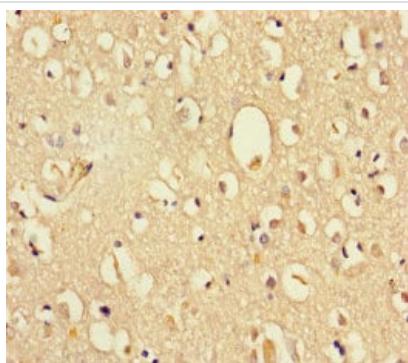
**Lane 3 :** K562 (human chronic myelogenous leukemia cell line from bone marrow) cell lysate

**Lane 4 :** HeLa (human epithelial cell line from cervix adenocarcinoma) cell lysate

#### Secondary

**All lanes :** Goat polyclonal to rabbit IgG at 1/10000 dilution

**Predicted band size:** 79 kDa



Immunohistochemistry (Formalin/PFA-fixed paraffin-embedded sections) - Anti-DHX35 antibody (ab235366)

Paraffin-embedded human brain tissue stained for DHX35 using ab235366 at 1/100 dilution in immunohistochemical analysis.

**Please note:** All products are "FOR RESEARCH USE ONLY. NOT FOR USE IN DIAGNOSTIC PROCEDURES"

#### Our Abpromise to you: Quality guaranteed and expert technical support

- Replacement or refund for products not performing as stated on the datasheet
- Valid for 12 months from date of delivery
- Response to your inquiry within 24 hours
- We provide support in Chinese, English, French, German, Japanese and Spanish
- Extensive multi-media technical resources to help you
- We investigate all quality concerns to ensure our products perform to the highest standards

If the product does not perform as described on this datasheet, we will offer a refund or replacement. For full details of the Abpromise, please visit <https://www.abcam.com/abpromise> or contact our technical team.

## Terms and conditions

---

- Guarantee only valid for products bought direct from Abcam or one of our authorized distributors