


## Product datasheet

# Anti-DIMT1L antibody ab184978

[1 References](#) [5 Images](#)

### Overview

---

|                            |   |
|----------------------------|---|
| <b>Product name</b>        | Anti-DIMT1L antibody  |
| <b>Description</b>         | Rabbit polyclonal to DIMT1L   |
| <b>Host species</b>        | Rabbit  |
| <b>Tested applications</b> | <b>Suitable for:</b> ICC, WB, IHC-P   |
| <b>Species reactivity</b>  | <b>Reacts with:</b> Human<br><b>Predicted to work with:</b> Mouse, Rat, Cow, Cynomolgus monkey   |
| <b>Immunogen</b>           | Recombinant fragment corresponding to Human DIMT1L aa 1-150.<br>Database link: <a href="#">Q9UNQ2</a><br><a href="#">Run BLAST with</a> <a href="#">Run BLAST with</a>  |
| <b>Positive control</b>    | IHC-P: Human hippocampus, endothelium, and squamous epithelia tissues; WB: RPMI 8226 cell lysate; ICC: U-251 MG cells.  |
| <b>General notes</b>       | <p>The Life Science industry has been in the grips of a reproducibility crisis for a number of years. Abcam is leading the way in addressing this with our range of recombinant monoclonal antibodies and knockout edited cell lines for gold-standard validation. Please check that this product meets your needs before purchasing.</p> <p>If you have any questions, special requirements or concerns, please send us an inquiry and/or contact our Support team ahead of purchase. Recommended alternatives for this product can be found below, along with publications, customer reviews and Q&amp;As</p> |

### Properties

---

|                             |   |
|-----------------------------|---|
| <b>Form</b>                 | Liquid  |
| <b>Storage instructions</b> | Shipped at 4°C. Store at +4°C short term (1-2 weeks). Upon delivery aliquot. Store at -20°C long term. Avoid freeze / thaw cycle. |
| <b>Storage buffer</b>       | pH: 7.20<br>Preservative: 0.02% Sodium azide<br>Constituents: 40% Glycerol (glycerin, glycerine), 59% PBS                         |
| <b>Purity</b>               | Immunogen affinity purified   |
| <b>Clonality</b>            | Polyclonal  |
| <b>Isotype</b>              | IgG   |

## Applications

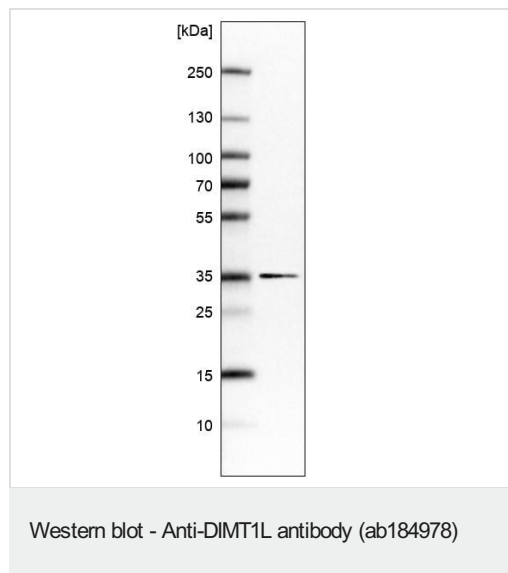
**The Abpromise guarantee** Our **Abpromise guarantee** covers the use of ab184978 in the following tested applications. The application notes include recommended starting dilutions; optimal dilutions/concentrations should be determined by the end user.

| Application | Abreviews | Notes  |
|-------------|-----------|--|
| ICC         |           | Use a concentration of 0.25 - 2 µg/ml.   |
| WB          |           | Use a concentration of 0.04 - 0.4 µg/ml. Predicted molecular weight: 35 kDa.   |
| IHC-P       |           | 1/500 - 1/1000. Perform heat mediated antigen retrieval with citrate buffer pH 6 before commencing with IHC staining protocol. |

## Target

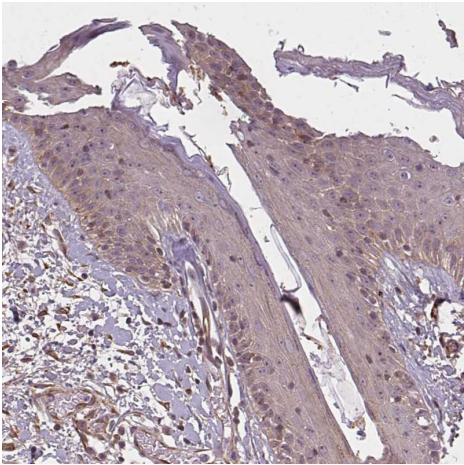
|                              |   |
|------------------------------|---|
| <b>Function</b>              | Specifically dimethylates two adjacent adenosines in the loop of a conserved hairpin near the 3'-end of 18S rRNA in the 40S particle. |
| <b>Sequence similarities</b> | Belongs to the methyltransferase superfamily. rRNA adenine N(6)-methyltransferase family.   |
| <b>Cellular localization</b> | Nucleus > nucleolus.  |

## Images



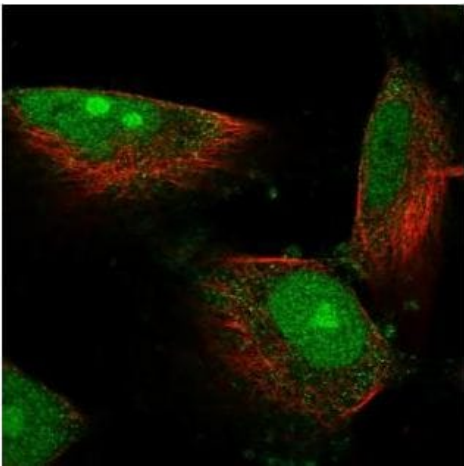
Anti-DIMT1L antibody (ab184978) at 0.4 µg/ml + RPMI 8226 (human lymphoblast cell line) cell lysate

**Predicted band size:** 35 kDa



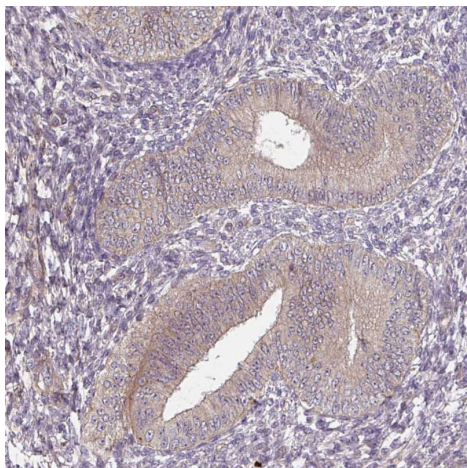
Immunohistochemistry (Formalin/PFA-fixed paraffin-embedded sections) - Anti-DIMT1L antibody (ab184978)

Immunohistochemistry (Formalin/PFA-fixed paraffin-embedded sections) analysis of human squamous epithelia tissue labelling DIMT1L with ab184978 at 1/500 dilution. Heat mediated antigen retrieval performed with citrate buffer pH 6 before commencing with IHC staining protocol.



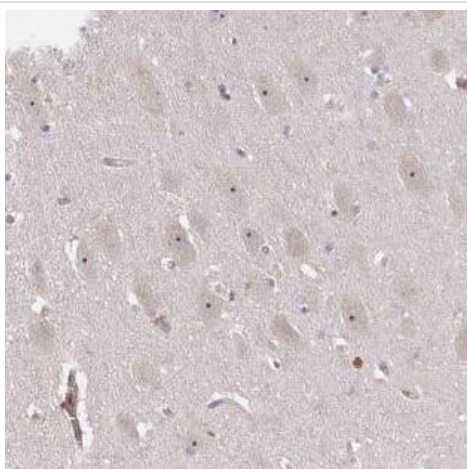
Immunocytochemistry - Anti-DIMT1L antibody (ab184978)

Immunofluorescence analysis of PFA/Triton X-100-fixed U-251 MG cells labelling DIMT1L with ab184978 at 4 µg/ml.



Immunohistochemistry (Formalin/PFA-fixed paraffin-embedded sections) analysis of human endometrium tissue labelling DIMT1L with ab184978 at 1/500 dilution. Heat mediated antigen retrieval performed with citrate buffer pH 6 before commencing with IHC staining protocol.

Immunohistochemistry (Formalin/PFA-fixed paraffin-embedded sections) - Anti-DIMT1L antibody (ab184978)



Immunohistochemical analysis of paraffin-embedded Human hippocampus tissue labeling DIMT1L with ab184978 at 1/500 dilution.

Immunohistochemistry (Formalin/PFA-fixed paraffin-embedded sections) - Anti-DIMT1L antibody (ab184978)

**Please note:** All products are "FOR RESEARCH USE ONLY. NOT FOR USE IN DIAGNOSTIC PROCEDURES"

**Our Abpromise to you: Quality guaranteed and expert technical support**

- Replacement or refund for products not performing as stated on the datasheet

- Valid for 12 months from date of delivery
- Response to your inquiry within 24 hours
  
- We provide support in Chinese, English, French, German, Japanese and Spanish
- Extensive multi-media technical resources to help you
- We investigate all quality concerns to ensure our products perform to the highest standards

If the product does not perform as described on this datasheet, we will offer a refund or replacement. For full details of the Abpromise, please visit <https://www.abcam.com/abpromise> or contact our technical team.

### **Terms and conditions**

---

- Guarantee only valid for products bought direct from Abcam or one of our authorized distributors