


Anti-DIS antibody ab70245

2 Images

Overview

| | |
|----------------------------|---|
| Product name | Anti-DIS antibody |
| Description | Rabbit polyclonal to DIS |
| Host species | Rabbit |
| Tested applications | Suitable for: WB, IP |
| Species reactivity | Reacts with: Human Predicted to work with: Dog, Chimpanzee, Rhesus monkey, Elephant  |
| Immunogen | Region between residue 1100 and the C terminus (residue 1150) of human DIS |
| Positive control | Nuclear extract from HeLa cells |
| General notes | <p>The Life Science industry has been in the grips of a reproducibility crisis for a number of years. Abcam is leading the way in addressing this with our range of recombinant monoclonal antibodies and knockout edited cell lines for gold-standard validation. Please check that this product meets your needs before purchasing.</p> <p>If you have any questions, special requirements or concerns, please send us an inquiry and/or contact our Support team ahead of purchase. Recommended alternatives for this product can be found below, along with publications, customer reviews and Q&As</p> |

Properties

| | |
|-----------------------------|---|
| Form | Liquid |
| Storage instructions | Shipped at 4°C. Upon delivery aliquot and store at -20°C. Avoid freeze / thaw cycles. |
| Storage buffer | pH: 7 Preservative: 0.09% Sodium azide Tris-citrate/phosphate buffer, pH 7 to 8 |
| Purity | Immunogen affinity purified |
| Purification notes | Antibody was affinity purified using an epitope specific to DIS immobilized on solid support. |
| Clonality | Polyclonal |
| Isotype | IgG |

Applications

Applications

The Abpromise guarantee

Our **Abpromise guarantee** covers the use of ab70245 in the following tested applications.

The application notes include recommended starting dilutions; optimal dilutions/concentrations should be determined by the end user.

| Application | Abreviews | Notes |
|-------------|-----------|-------|
| WB | | |
| IP | | |

Application notes

IP: Use at 1-10µg/mg of lysate.

WB: 1/1000 - 1/10000. Detects a band of approximately 132 kDa (predicted molecular weight: 132 kDa).

Not yet tested in other applications.

Optimal dilutions/concentrations should be determined by the end user.

Target

Function

Associates with components of the Mediator and p160 coactivator complexes that play a role as intermediaries transducing regulatory signals from upstream transcriptional activator proteins to basal transcription machinery at the core promoter. Recruited to endogenous nuclear receptor target genes in response to the appropriate hormone. Also functions as a p53 coactivator. May thus play an important role in transcriptional regulation (By similarity). May be involved in apoptosis signaling in the presence of the renoind CD437. Apoptosis induction involves sequestration of 14-3-3 protein(s) and mediated altered expression of multiple cell cycle regulatory genes including MYC, CCNB1 and CDKN1A. Plays a role in cell cycle progression and/or cell proliferation.

Tissue specificity

Expressed in various epithelial cancer cell lines, including breast, colon, prostate, pancreatic and leukemia. Expression is regulated by growth factors.

Sequence similarities

Contains 1 SAP domain.

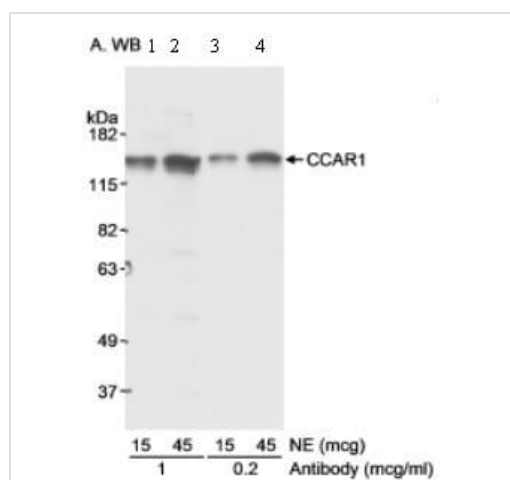
Post-translational modifications

Phosphorylated upon DNA damage, probably by ATM or ATR.

Cellular localization

Cytoplasm > perinuclear region.

Images



Western blot - Anti-DIS antibody (ab70245)

Lanes 1-2 : Anti-DIS antibody (ab70245) at 1 μ g/ml

Lanes 3-4 : Anti-DIS antibody (ab70245) at 0.2 μ g/ml

Lanes 1 & 3 : Nuclear extract from HeLa cells at 15 μ g

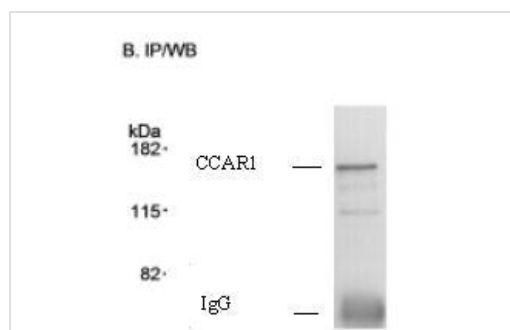
Lanes 2 & 4 : Nuclear extract from HeLa cells at 45 μ g

Developed using the ECL technique.

Predicted band size: 132 kDa

Observed band size: 132 kDa

Exposure time: 1 minute



Immunoprecipitation - Anti-DIS antibody (ab70245)

Detection of Human CCAR1 by Immunoprecipitation using Nuclear extract (100 μ g) from HeLa cells and Affinity purified rabbit anti-CCAR1 ab70245 at 1 μ g/100 μ g Nuclear extract.

Chemiluminescence with exposure times of approximately 3 seconds.

Please note: All products are "FOR RESEARCH USE ONLY. NOT FOR USE IN DIAGNOSTIC PROCEDURES"

Our Abpromise to you: Quality guaranteed and expert technical support

- Replacement or refund for products not performing as stated on the datasheet
- Valid for 12 months from date of delivery
- Response to your inquiry within 24 hours
- We provide support in Chinese, English, French, German, Japanese and Spanish
- Extensive multi-media technical resources to help you

- We investigate all quality concerns to ensure our products perform to the highest standards

If the product does not perform as described on this datasheet, we will offer a refund or replacement. For full details of the Abpromise, please visit <https://www.abcam.com/abpromise> or contact our technical team.

Terms and conditions

- Guarantee only valid for products bought direct from Abcam or one of our authorized distributors