




## Product datasheet

# Anti-Dishevelled / Dvl1 antibody ab233003

[8 References](#) [4 Images](#)

### Overview

<b>Product name</b>	Anti-Dishevelled / Dvl1 antibody
<b>Description</b>	Rabbit polyclonal to Dishevelled / Dvl1
<b>Host species</b>	Rabbit
<b>Tested applications</b>	<b>Suitable for:</b> IHC-P, WB
<b>Species reactivity</b>	<b>Reacts with:</b> Human <b>Predicted to work with:</b> Mouse, Rat, Chimpanzee 
<b>Immunogen</b>	Recombinant fragment (His-T7-tag) corresponding to Human Dishevelled/ Dvl1 aa 150-300. Two N-terminal Tags; Expressed in E.coli. Database link: <a href="#">O14640-1</a>  <a href="#">Run BLAST with</a>  <a href="#">Run BLAST with</a>
<b>Positive control</b>	WB: Human lung lysate; Recombinant human Dishevelled / Dvl1 protein. IHC-P: Human liver and glioma tissue.
<b>General notes</b>	<p>The Life Science industry has been in the grips of a reproducibility crisis for a number of years. Abcam is leading the way in addressing this with our range of recombinant monoclonal antibodies and knockout edited cell lines for gold-standard validation. Please check that this product meets your needs before purchasing.</p> <p>If you have any questions, special requirements or concerns, please send us an inquiry and/or contact our Support team ahead of purchase. Recommended alternatives for this product can be found below, along with publications, customer reviews and Q&amp;As</p>

### Properties

<b>Form</b>	Liquid
<b>Storage instructions</b>	Shipped at 4°C. Store at +4°C short term (1-2 weeks). Upon delivery aliquot. Store at -20°C long term. Avoid freeze / thaw cycle.
<b>Storage buffer</b>	pH: 7.40 Preservative: 0.011% Proclin 300 Constituents: 55.77% Glycerol (glycerin, glycerine), 44.219% PBS
<b>Purity</b>	Immunogen affinity purified
<b>Purification notes</b>	Antigen-specific affinity chromatography followed by Protein A affinity chromatography.
<b>Clonality</b>	Polyclonal

Isotype

IgG

## Applications

### The Abpromise guarantee

Our **Abpromise guarantee** covers the use of ab233003 in the following tested applications.

The application notes include recommended starting dilutions; optimal dilutions/concentrations should be determined by the end user.

Application	Abreviews	Notes
IHC-P		Use a concentration of 5 - 20 µg/ml.
WB		Use a concentration of 1 - 5 µg/ml.

## Target

### Function

Participates in Wnt signaling by binding to the cytoplasmic C-terminus of frizzled family members and transducing the Wnt signal to down-stream effectors. Plays a role both in canonical and non-canonical Wnt signaling. Plays a role in the signal transduction pathways mediated by multiple Wnt genes. Required for LEF1 activation upon WNT1 and WNT3A signaling. DVL1 and PAK1 form a ternary complex with MUSK which is important for MUSK-dependent regulation of AChR clustering during the formation of the neuromuscular junction (NMJ).

### Involvement in disease

Robinow syndrome, autosomal dominant 2

### Sequence similarities

Belongs to the DSH family.  
Contains 1 DEP domain.  
Contains 1 DIX domain.  
Contains 1 PDZ (DHR) domain.

### Domain

The DIX domain promotes homooligomerization.  
The DEP domain mediates interaction with the cell membrane.

### Post-translational modifications

Ubiquitinated; undergoes both 'Lys-48'-linked ubiquitination, leading to its subsequent degradation by the ubiquitin-proteasome pathway, and 'Lys-63'-linked ubiquitination. The interaction with INVS is required for ubiquitination. Deubiquitinated by CYLD, which acts on 'Lys-63'-linked ubiquitin chains.

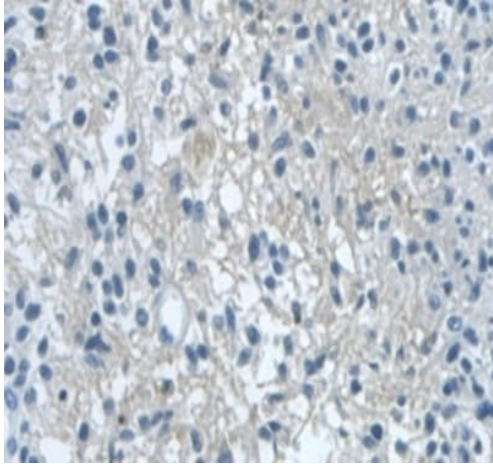
### Cellular localization

Cell membrane. Cytoplasm, cytosol. Cytoplasmic vesicle. Localizes at the cell membrane upon interaction with frizzled family members.

### Form

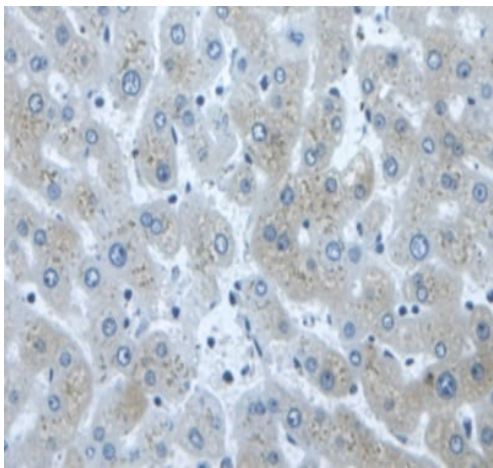
There are 2 isoforms produced by alternative splicing.

## Images



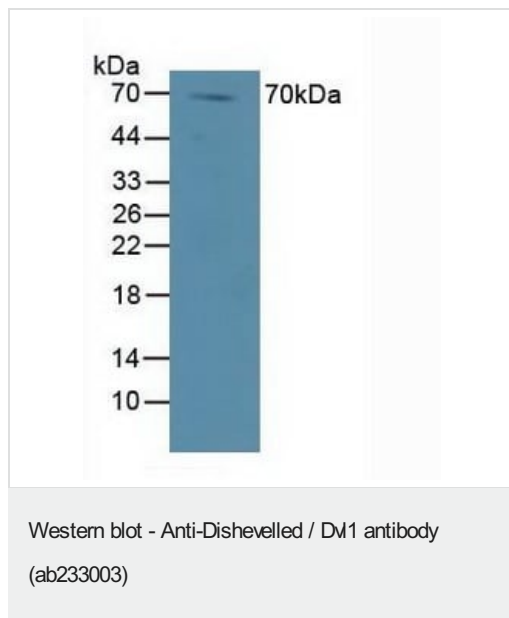
Formalin-fixed, paraffin-embedded human glioma tissue stained for Dishevelled / Dvl1 using ab233003 at 20 ug/ml in immunohistochemical analysis. DAB staining.

Immunohistochemistry (Formalin/PFA-fixed paraffin-embedded sections) - Anti-Dishevelled / Dvl1 antibody (ab233003)



Formalin-fixed, paraffin-embedded human liver tissue stained for Dishevelled / Dvl1 using ab233003 at 20 ug/ml in immunohistochemical analysis. DAB staining.

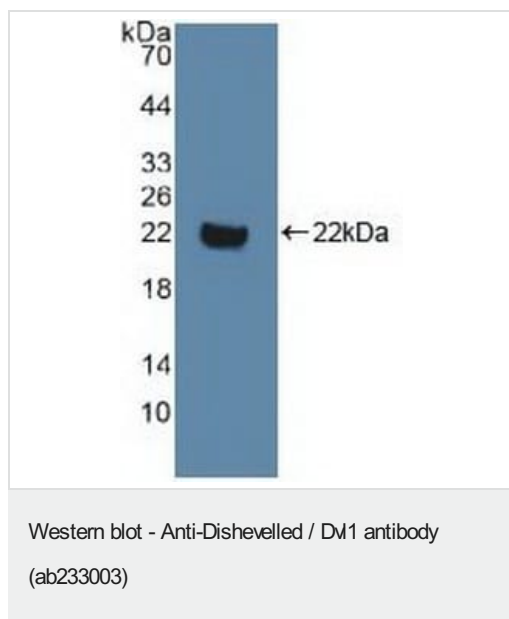
Immunohistochemistry (Formalin/PFA-fixed paraffin-embedded sections) - Anti-Dishevelled / Dvl1 antibody (ab233003)



Anti-Dishevelled / Dvl1 antibody (ab233003) at 2 µg/ml + Human lung tissue

### Secondary

HRP-Linked Guinea pig anti-rabbit at 1/2000 dilution



Anti-Dishevelled / Dvl1 antibody (ab233003) at 2 µg/ml + Recombinant human Dishevelled / Dvl1 protein

**Please note:** All products are "FOR RESEARCH USE ONLY. NOT FOR USE IN DIAGNOSTIC PROCEDURES"

### Our Abpromise to you: Quality guaranteed and expert technical support

- Replacement or refund for products not performing as stated on the datasheet
- Valid for 12 months from date of delivery
- Response to your inquiry within 24 hours

- We provide support in Chinese, English, French, German, Japanese and Spanish
- Extensive multi-media technical resources to help you
- We investigate all quality concerns to ensure our products perform to the highest standards

If the product does not perform as described on this datasheet, we will offer a refund or replacement. For full details of the Abpromise, please visit <https://www.abcam.com/abpromise> or contact our technical team.

#### **Terms and conditions**

---

- Guarantee only valid for products bought direct from Abcam or one of our authorized distributors