


## Product datasheet

# Anti-DIXDC1 antibody ab226210

[1 References](#) [2 Images](#)

### Overview

---

<b>Product name</b>	Anti-DIXDC1 antibody
<b>Description</b>	Rabbit polyclonal to DIXDC1
<b>Host species</b>	Rabbit
<b>Tested applications</b>	<b>Suitable for:</b> WB, IP
<b>Species reactivity</b>	<b>Reacts with:</b> Human <b>Predicted to work with:</b> Rabbit, Horse, Chicken, Guinea pig, Cow, Dog, Pig, Chimpanzee, Zebrafish, Rhesus monkey 
<b>Immunogen</b>	Synthetic peptide within Human DIXDC1 aa 633-683. The exact sequence is proprietary. NP_001033043.1 Database link: <a href="#">Q155Q3-1</a>
<b>Positive control</b>	IP: HEK-293T whole cell lysate. WB: HeLa and HEK-293T whole cell lysate.
<b>General notes</b>	<p>The Life Science industry has been in the grips of a reproducibility crisis for a number of years. Abcam is leading the way in addressing this with our range of recombinant monoclonal antibodies and knockout edited cell lines for gold-standard validation. Please check that this product meets your needs before purchasing.</p> <p>If you have any questions, special requirements or concerns, please send us an inquiry and/or contact our Support team ahead of purchase. Recommended alternatives for this product can be found below, along with publications, customer reviews and Q&amp;As</p>

### Properties

---

<b>Form</b>	Liquid
<b>Storage instructions</b>	Shipped at 4°C. Store at +4°C short term (1-2 weeks). Upon delivery aliquot. Store at -20°C long term. Avoid freeze / thaw cycle.
<b>Storage buffer</b>	pH: 7 Preservative: 0.09% Sodium azide Constituent: Tris citrate/phosphate
<b>Purity</b>	pH 7 to 8 Immunogen affinity purified
<b>Clonality</b>	Polyclonal

Isotype

IgG

## Applications

---

### The Abpromise guarantee

Our **Abpromise guarantee** covers the use of ab226210 in the following tested applications.

The application notes include recommended starting dilutions; optimal dilutions/concentrations should be determined by the end user.

Application	Abreviews	Notes
WB		1/1000 - 1/5000. Predicted molecular weight: 77 kDa.
IP		Use at 2-10 µg/mg of lysate.

## Target

---

### Function

Positive effector of the Wnt signaling pathway; activates WNT3A signaling via DVL2. Regulates JNK activation by AXIN1 and DVL2.

### Tissue specificity

Ubiquitously expressed with higher expression in cardiac and skeletal muscles.

### Sequence similarities

Belongs to the DIXDC1 family.

Contains 1 CH (calponin-homology) domain.

Contains 1 DIX domain.

### Domain

The coiled-coil domain mediates interaction with MAP3K4 and inhibition of AXIN1-mediated JNK activation through MAP3K4.

The DIX domain mediates interaction with AXIN1 and inhibition of AXIN1-mediated JNK activation through MAP3K1. Mediates interaction with DVL2; this interaction is required for activation of Wnt signaling.

### Post-translational modifications

Phosphorylated on tyrosine and serine residues.

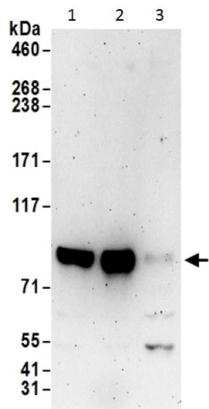
Polyubiquitinated, leading to its proteasomal degradation. WNT3A signaling increases DIXDC1 protein levels by inhibiting its ubiquitination and subsequent degradation.

### Cellular localization

Cytoplasm; Cell junction > focal adhesion. Associated with actin stress fiber at the filament ends and Cytoplasm > cytosol. Colocalizes with gamma-tubulin at the centrosome, both during interphase and mitosis.

## Images

---



Western blot - Anti-DIXDC1 antibody (ab226210)

**All lanes :** Anti-DIXDC1 antibody (ab226210) at 0.4 µg/ml

**Lane 1 :** HEK-293T (human epithelial cell line from embryonic kidney transformed with large T antigen) whole cell lysate

**Lane 2 :** HeLa (human epithelial cell line from cervix adenocarcinoma) whole cell lysate

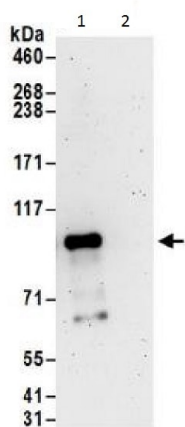
**Lane 3 :** Jurkat (human T cell leukemia cell line from peripheral blood) whole cell lysate

Lysates/proteins at 50 µg per lane.

Developed using the ECL technique.

**Predicted band size:** 77 kDa

**Exposure time:** 3 minutes



Immunoprecipitation - Anti-DIXDC1 antibody (ab226210)

DIXDC1 was immunoprecipitated from HEK-293T (human epithelial cell line from embryonic kidney transformed with large T antigen) whole cell lysate (1 mg for IP, 20% of IP loaded) with ab226210 at 6 µg/mg lysate. Western blot was performed from the immunoprecipitate using ab226210 at 1 µg/ml.

Lane 1: ab226210 IP in HEK-293T whole cell lysate.

Lane 2: Control IgG IP in HEK-293T whole cell lysate.

Detection: Chemiluminescence with exposure time of 3 minutes.

## **Our Abpromise to you: Quality guaranteed and expert technical support**

---

- Replacement or refund for products not performing as stated on the datasheet
- Valid for 12 months from date of delivery
- Response to your inquiry within 24 hours
  
- We provide support in Chinese, English, French, German, Japanese and Spanish
- Extensive multi-media technical resources to help you
- We investigate all quality concerns to ensure our products perform to the highest standards

If the product does not perform as described on this datasheet, we will offer a refund or replacement. For full details of the Abpromise, please visit <https://www.abcam.com/abpromise> or contact our technical team.

## **Terms and conditions**

---

- Guarantee only valid for products bought direct from Abcam or one of our authorized distributors