


# Anti-DKK1 antibody ab93017

[1 Abreviews](#) [6 References](#) [3 Images](#)

## Overview

<b>Product name</b>	Anti-DKK1 antibody
<b>Description</b>	Rabbit polyclonal to DKK1
<b>Host species</b>	Rabbit
<b>Specificity</b>	From Jan 2024, QC testing of replenishment batches of this polyclonal changed. All tested and expected application and reactive species combinations are still covered by our Abcam product promise. However, we no longer test all applications. For more information on a specific batch, please contact our Scientific Support who will be happy to help. You may also be interested in our alternative recombinant antibody, <a href="#">ab109416</a> .
<b>Tested applications</b>	<b>Suitable for:</b> WB, IHC-P
<b>Species reactivity</b>	<b>Reacts with:</b> Human <b>Predicted to work with:</b> Mouse, Rat, Rabbit, Pig 
<b>Immunogen</b>	Synthetic peptide corresponding to Human DKK1 aa 150-250 conjugated to keyhole limpet haemocyanin. (Peptide available as <a href="#">ab101729</a> )
<b>Positive control</b>	Recombinant human DKK1 protein ( <a href="#">ab82115</a> ) can be used as a positive control in WB. This antibody gave a positive signal in the following whole cell lysates: HeLa; Saos 2; HepG2.
<b>General notes</b>	<p>The Life Science industry has been in the grips of a reproducibility crisis for a number of years. Abcam is leading the way in addressing this with our range of recombinant monoclonal antibodies and knockout edited cell lines for gold-standard validation. Please check that this product meets your needs before purchasing.</p> <p>If you have any questions, special requirements or concerns, please send us an inquiry and/or contact our Support team ahead of purchase. Recommended alternatives for this product can be found below, along with publications, customer reviews and Q&amp;As</p>

## Properties

<b>Form</b>	Liquid
<b>Storage instructions</b>	Shipped at 4°C. Store at +4°C short term (1-2 weeks). Upon delivery aliquot. Store at -20°C or -80°C. Avoid freeze / thaw cycle.
<b>Storage buffer</b>	pH: 7.40 Preservative: 0.02% Sodium azide

Constituent: PBS

Batches of this product that have a concentration < 1mg/ml may have BSA added as a stabilising agent. If you would like information about the formulation of a specific lot, please contact our scientific support team who will be happy to help.

<b>Purity</b>	Immunogen affinity purified
<b>Clonality</b>	Polyclonal
<b>Isotype</b>	IgG

## Applications

**The Abpromise guarantee** Our **Abpromise guarantee** covers the use of ab93017 in the following tested applications.

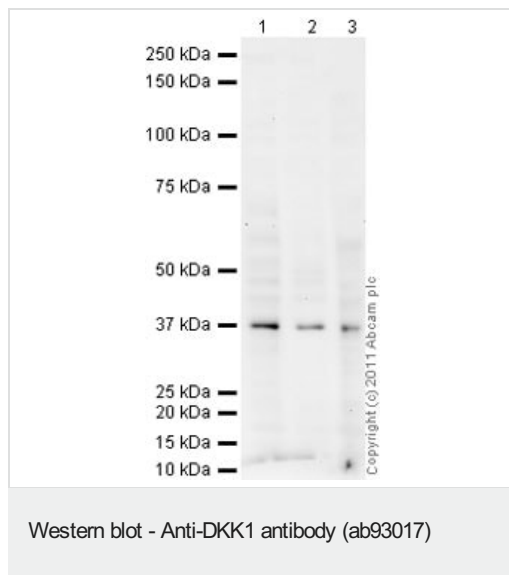
The application notes include recommended starting dilutions; optimal dilutions/concentrations should be determined by the end user.

Application	Abreviews	Notes
<b>WB</b>		Use a concentration of 1 µg/ml. Detects a band of approximately 38 kDa (predicted molecular weight: 29 kDa).
<b>IHC-P</b>		Use a concentration of 5 µg/ml. Perform heat mediated antigen retrieval before commencing with IHC staining protocol.

## Target

<b>Function</b>	Antagonizes canonical Wnt signaling by inhibiting LRP5/6 interaction with Wnt and by forming a ternary complex with the transmembrane protein KREMEN that promotes internalization of LRP5/6. DKKs play an important role in vertebrate development, where they locally inhibit Wnt regulated processes such as antero-posterior axial patterning, limb development, somitogenesis and eye formation. In the adult, Dkks are implicated in bone formation and bone disease, cancer and Alzheimer disease.
<b>Tissue specificity</b>	Placenta.
<b>Sequence similarities</b>	Belongs to the dickkopf family.
<b>Domain</b>	The C-terminal cysteine-rich domain mediates interaction with LRP5 and LRP6.
<b>Cellular localization</b>	Secreted.

## Images



**All lanes :** Anti-DKK1 antibody (ab93017) at 1 µg/ml

**Lane 1 :** PC-3 whole cell lysate ([ab3954](#))

**Lane 2 :** MCF7 (Human breast adenocarcinoma cell line) Whole Cell Lysate

**Lane 3 :** MDA-MB-231 (Human breast adenocarcinoma cell line) Whole Cell Lysate

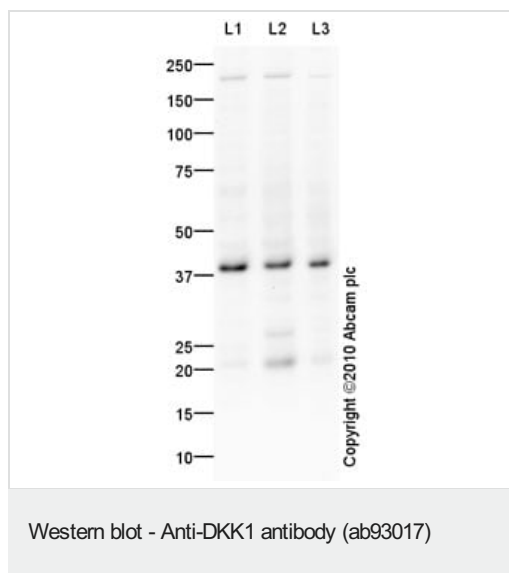
Lysates/proteins at 10 µg per lane.

#### Secondary

**All lanes :** Goat Anti-Rabbit IgG H&L (HRP) preadsorbed ([ab97080](#)) at 1/5000 dilution

**Predicted band size:** 29 kDa

**Observed band size:** 38 kDa



**All lanes :** Anti-DKK1 antibody (ab93017) at 1 µg/ml

**Lane 1 :** HeLa (Human epithelial carcinoma cell line) Whole Cell Lysate

**Lane 2 :** Saos 2 (Human epithelial-like osteosarcoma cell line) Whole Cell Lysate

**Lane 3 :** HepG2 (Human hepatocellular liver carcinoma cell line) Whole Cell Lysate

Lysates/proteins at 10 µg per lane.

#### Secondary

**All lanes :** Goat Anti-Rabbit IgG H&L (HRP) preadsorbed ([ab97080](#)) at 1/5000 dilution

Developed using the ECL technique.

Performed under reducing conditions.

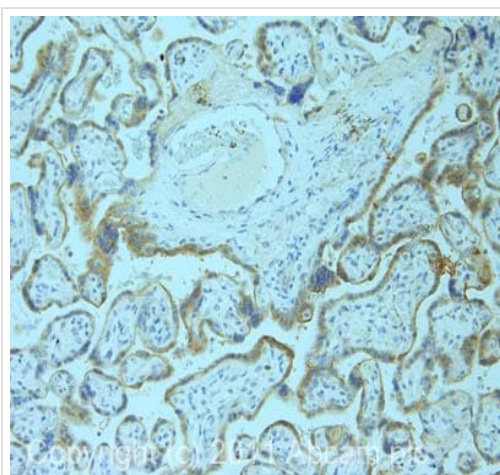
**Predicted band size:** 29 kDa

**Observed band size:** 38 kDa

**Additional bands at:** 200 kDa, 21 kDa, 29 kDa. We are unsure as to the identity of these extra bands.

**Exposure time:** 20 minutes

Please note that a band of similar size is reported in the literature (PMID 10383463).



Immunohistochemistry (Formalin/PFA-fixed paraffin-embedded sections) - Anti-DKK1 antibody (ab93017)

IHC image of DKK1 staining in human placenta formalin fixed paraffin embedded tissue section, performed on a Leica Bond™ system using the standard protocol F. The section was pre-treated using heat mediated antigen retrieval with sodium citrate buffer (pH6, epitope retrieval solution 1) for 20 mins. The section was then incubated with ab93017, 5µg/ml, for 15 mins at room temperature and detected using an HRP conjugated compact polymer system. DAB was used as the chromogen. The section was then counterstained with haematoxylin and mounted with DPX.

**Please note:** All products are "FOR RESEARCH USE ONLY. NOT FOR USE IN DIAGNOSTIC PROCEDURES"

### Our Abpromise to you: Quality guaranteed and expert technical support

---

- Replacement or refund for products not performing as stated on the datasheet
- Valid for 12 months from date of delivery
- Response to your inquiry within 24 hours
- We provide support in Chinese, English, French, German, Japanese and Spanish
- Extensive multi-media technical resources to help you
- We investigate all quality concerns to ensure our products perform to the highest standards

If the product does not perform as described on this datasheet, we will offer a refund or replacement. For full details of the Abpromise, please visit <https://www.abcam.com/abpromise> or contact our technical team.

### Terms and conditions

---

- Guarantee only valid for products bought direct from Abcam or one of our authorized distributors