


Product datasheet

Anti-DLC-A antibody [EPR11240] ab157468

Recombinant RabMAb

[7 References](#) [6 Images](#)

Overview

Product name	Anti-DLC-A antibody [EPR11240]
Description	Rabbit monoclonal [EPR11240] to DLC-A
Host species	Rabbit
Tested applications	Suitable for: WB, IHC-P, ICC/IF Unsuitable for: Flow Cyt
Species reactivity	Reacts with: Human Predicted to work with: Mouse, Rat 
Immunogen	Recombinant fragment corresponding to Human DLC-A. Database link: Q9Y6G9
Positive control	K562, HeLa, fetal brain, fetal heart and Jurkat lysates; Human heart and pancreas tissues; K562 cells; Immunoprecipitation pellet from fetal brain lysate.
General notes	This product is a recombinant monoclonal antibody, which offers several advantages including: <ul style="list-style-type: none"> - High batch-to-batch consistency and reproducibility - Improved sensitivity and specificity - Long-term security of supply - Animal-free production For more information see here . Our RabMAb [®] technology is a patented hybridoma-based technology for making rabbit monoclonal antibodies. For details on our patents, please refer to RabMAb[®] patents .

Properties

Form	Liquid
Storage instructions	Shipped at 4°C. Store at -20°C.
Storage buffer	pH: 7.2 Preservative: 0.01% Sodium azide Constituents: 9% PBS, 40% Glycerol (glycerin, glycerine), 0.05% BSA, 50% Tissue culture supernatant
Purity	Tissue culture supernatant
Clonality	Monoclonal

Clone number EPR11240

Isotype IgG

Applications

The Abpromise guarantee Our **Abpromise guarantee** covers the use of ab157468 in the following tested applications.

The application notes include recommended starting dilutions; optimal dilutions/concentrations should be determined by the end user.

Application	Abreviews	Notes
WB		1/1000 - 1/10000. Predicted molecular weight: 57 kDa.
IHC-P		1/100 - 1/250. Perform heat mediated antigen retrieval with citrate buffer pH 6 before commencing with IHC staining protocol.
ICC/IF		1/100 - 1/250.

Application notes Is unsuitable for Flow Cyt.

Target

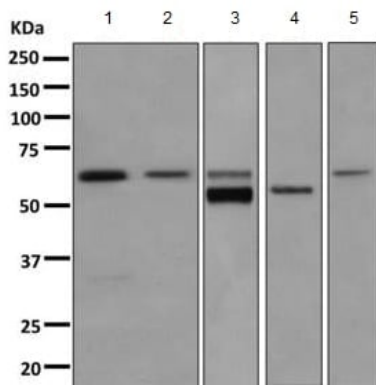
Function Acts as one of several non-catalytic accessory components of the cytoplasmic dynein 1 complex that are thought to be involved in linking dynein to cargos and to adapter proteins that regulate dynein function. Cytoplasmic dynein 1 acts as a motor for the intracellular retrograde motility of vesicles and organelles along microtubules. May play a role in binding dynein to membranous organelles or chromosomes. Probably involved in the microtubule-dependent transport of pericentrin. Is required for progress through the spindle assembly checkpoint. The phosphorylated form appears to be involved in the selective removal of MAD1L1 and MAD1L2 but not BUB1B from kinetochores.

Sequence similarities Belongs to the dynein light intermediate chain family.

Post-translational modifications Phosphorylated during mitosis but not in interphase.

Cellular localization Cytoplasm. Chromosome > centromere > kinetochore. Cytoplasm > cytoskeleton > spindle pole.

Images



Western blot - Anti-DLC-A antibody [EPR11240]
(ab157468)

All lanes : Anti-DLC-A antibody [EPR11240] (ab157468) at
1/1000 dilution

Lane 1 : K562 cell lysate

Lane 2 : HeLa cell lysate

Lane 3 : Fetal brain tissue lysate

Lane 4 : Fetal heart tissue lysate

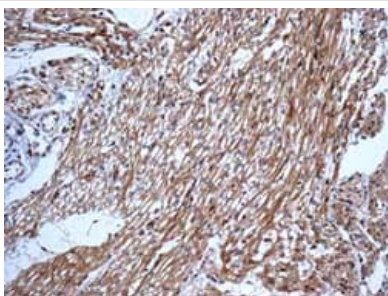
Lane 5 : Jurkat cell lysate

Lysates/proteins at 10 µg per lane.

Secondary

All lanes : HRP labelled goat anti-rabbit at 1/2000 dilution

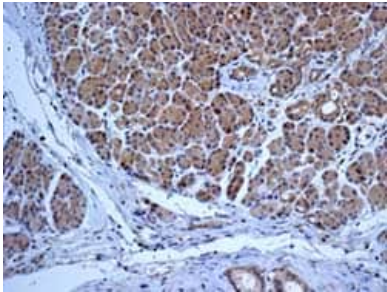
Predicted band size: 57 kDa



Immunohistochemistry (Formalin/PFA-fixed paraffin-
embedded sections) - Anti-DLC-A antibody
[EPR11240] (ab157468)

Immunohistochemical analysis of paraffin-embedded Human heart
tissue labeling DLC-A with ab157468 at 1/100 dilution.

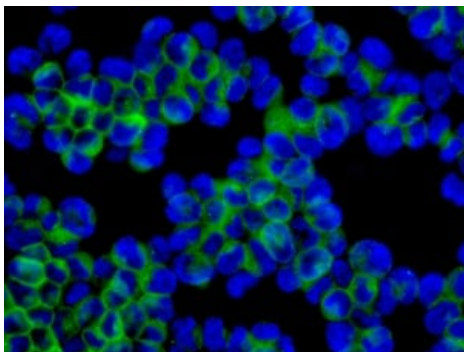
Perform heat mediated antigen retrieval with citrate buffer pH 6
before commencing with IHC staining protocol.



Immunohistochemistry (Formalin/PFA-fixed paraffin-embedded sections) - Anti-DLC-A antibody [EPR11240] (ab157468)

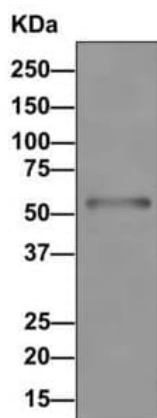
Immunohistochemical analysis of paraffin-embedded Human pancreas tissue labeling DLC-A with ab157468 at 1/100 dilution.

Perform heat mediated antigen retrieval with citrate buffer pH 6 before commencing with IHC staining protocol.



Immunocytochemistry/ Immunofluorescence - Anti-DLC-A antibody [EPR11240] (ab157468)

Immunofluorescent analysis of K562 cells labeling DLC-A with ab157468 at 1/100 dilution.



Western blot - Anti-DLC-A antibody [EPR11240] (ab157468)

Anti-DLC-A antibody [EPR11240] (ab157468) at 1/1000 dilution + immunoprecipitation pellet from fetal brain lysate

Secondary

HRP-conjugated anti-rabbit IgG, which preferentially detects the non-reduced form of rabbit IgG.

Predicted band size: 57 kDa

Why choose a recombinant antibody?



Research with confidence
Consistent and reproducible results



Long-term and scalable supply
Recombinant technology



Success from the first experiment
Confirmed specificity



Ethical standards compliant
Animal-free production

Anti-DLC-A antibody [EPR11240] (ab157468)

Please note: All products are "FOR RESEARCH USE ONLY. NOT FOR USE IN DIAGNOSTIC PROCEDURES"

Our Abpromise to you: Quality guaranteed and expert technical support

- Replacement or refund for products not performing as stated on the datasheet
- Valid for 12 months from date of delivery
- Response to your inquiry within 24 hours
- We provide support in Chinese, English, French, German, Japanese and Spanish
- Extensive multi-media technical resources to help you
- We investigate all quality concerns to ensure our products perform to the highest standards

If the product does not perform as described on this datasheet, we will offer a refund or replacement. For full details of the Abpromise, please visit <https://www.abcam.com/abpromise> or contact our technical team.

Terms and conditions

- Guarantee only valid for products bought direct from Abcam or one of our authorized distributors