


Anti-DLK-1 antibody ab21682

★★★★★ [5 Abreviews](#) [31 References](#) [1 Image](#)

Overview

Product name	Anti-DLK-1 antibody
Description	Rabbit polyclonal to DLK-1
Host species	Rabbit
Tested applications	Suitable for: WB
Species reactivity	Reacts with: Mouse Predicted to work with: Rat, Cow, Human 
Immunogen	Synthetic peptide corresponding to Human DLK-1 aa 350 to the C-terminus (C terminal) conjugated to keyhole limpet haemocyanin. (Peptide available as ab23442)
Positive control	This antibody gave a positive signal in E18.5 Mouse Muscle Wild Type Tissue Lysate.
General notes	<p>The Life Science industry has been in the grips of a reproducibility crisis for a number of years. Abcam is leading the way in addressing this with our range of recombinant monoclonal antibodies and knockout edited cell lines for gold-standard validation. Please check that this product meets your needs before purchasing.</p> <p>If you have any questions, special requirements or concerns, please send us an inquiry and/or contact our Support team ahead of purchase. Recommended alternatives for this product can be found below, along with publications, customer reviews and Q&As</p>

Properties

Form	Liquid
Storage instructions	Shipped at 4°C. Store at +4°C short term (1-2 weeks). Upon delivery aliquot. Store at -20°C or -80°C. Avoid freeze / thaw cycle.
Storage buffer	pH: 7.40 Preservative: 0.02% Sodium azide Constituent: PBS Batches of this product that have a concentration < 1mg/ml may have BSA added as a stabilising agent. If you would like information about the formulation of a specific lot, please contact our scientific support team who will be happy to help.
Purity	Immunogen affinity purified

Clonality	Polyclonal
Isotype	IgG

Applications

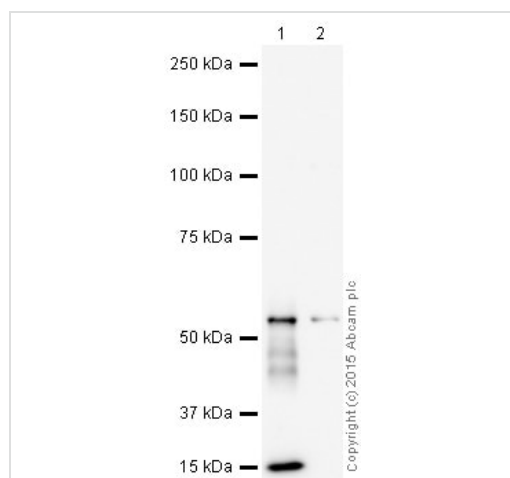
The Abpromise guarantee Our **Abpromise guarantee** covers the use of ab21682 in the following tested applications. The application notes include recommended starting dilutions; optimal dilutions/concentrations should be determined by the end user.

Application	Abreviews	Notes
WB		1/2000. Detects a band of approximately 45,48 kDa (predicted molecular weight: 41 kDa). Abcam recommends using milk as the blocking agent. Abcam welcomes customer feedback and would appreciate any comments regarding this product.

Target

Function	May have a role in neuroendocrine differentiation.
Tissue specificity	Found within the stromal cells in close contact to the vascular structure of placental villi, yolk sac, fetal liver, adrenal cortex and pancreas and in the beta cells of the islets of Langerhans in the adult pancreas. Found also in some forms of neuroendocrine lung tumor tissue.
Sequence similarities	Contains 6 EGF-like domains.
Post-translational modifications	N- and O-glycosylated.
Cellular localization	Membrane.

Images



Western blot - Anti-DLK-1 antibody (ab21682)

All lanes : Anti-DLK-1 antibody (ab21682) at 1/2000 dilution ((5% Milk blocking))

Lane 1 : E18.5 Mouse Muscle Wild Type Tissue Lysate

Lane 2 : E18.5 Mouse Muscle DLK1 Knockout Tissue Lysate

Lysates/proteins at 5 µg per lane.

Secondary

All lanes : Goat polyclonal to Rabbit IgG - H&L - Pre-Adsorbed (HRP) at 1/5000 dilution

Developed using the ECL technique.

Performed under reducing conditions.

Predicted band size: 41 kDa

Observed band size: 45,48 kDa

Additional bands at: 15 kDa (possible cleavage fragment), 55 kDa. We are unsure as to the identity of these extra bands.

Exposure time: 3 minutes

This blot was produced using an 8% Tris-glycine gel under the Tris-glycine buffer system. The gel was run at 120V for 1 hour 15 minutes before being transferred onto a Nitrocellulose membrane at 30V for 70 minutes. The membrane was then blocked for an hour using 5% Milk before being incubated with ab21682 overnight at 4°C. Antibody binding was detected using an anti-rabbit antibody conjugated to HRP, and visualised using ECL development solution **ab133406**.

Abcam recommends using milk as the blocking agent. Abcam welcomes customer feedback and would appreciate any comments regarding this product and the data presented above.

Please note: All products are "FOR RESEARCH USE ONLY. NOT FOR USE IN DIAGNOSTIC PROCEDURES"

Our Abpromise to you: Quality guaranteed and expert technical support

- Replacement or refund for products not performing as stated on the datasheet
- Valid for 12 months from date of delivery
- Response to your inquiry within 24 hours
- We provide support in Chinese, English, French, German, Japanese and Spanish
- Extensive multi-media technical resources to help you
- We investigate all quality concerns to ensure our products perform to the highest standards

If the product does not perform as described on this datasheet, we will offer a refund or replacement. For full details of the Abpromise, please visit <https://www.abcam.com/abpromise> or contact our technical team.

Terms and conditions

- Guarantee only valid for products bought direct from Abcam or one of our authorized distributors