

Anti-DMXL2 antibody ab240690

2 Images

Overview

| | |
|----------------------------|---|
| Product name | Anti-DMXL2 antibody |
| Description | Rabbit polyclonal to DMXL2 |
| Host species | Rabbit |
| Tested applications | Suitable for: WB, IP |
| Species reactivity | Reacts with: Human |
| Immunogen | Synthetic peptide within Human DMXL2 aa 1450-1500. The exact sequence is proprietary. Database link: Q8TDJ6 |
| Positive control | WB: HeLa, HEK-293T and Jurkat whole cell lysates. IP: Jurkat whole cell lysate. |
| General notes | <p>The Life Science industry has been in the grips of a reproducibility crisis for a number of years. Abcam is leading the way in addressing this with our range of recombinant monoclonal antibodies and knockout edited cell lines for gold-standard validation. Please check that this product meets your needs before purchasing.</p> <p>If you have any questions, special requirements or concerns, please send us an inquiry and/or contact our Support team ahead of purchase. Recommended alternatives for this product can be found below, along with publications, customer reviews and Q&As</p> |

Properties

| | |
|-----------------------------|---|
| Form | Liquid |
| Storage instructions | Shipped at 4°C. Store at +4°C short term (1-2 weeks). Upon delivery aliquot. Store at -20°C long term. Avoid freeze / thaw cycle. |
| Storage buffer | pH: 6.8 Preservative: 0.09% Sodium azide Constituents: Tris buffered saline, 0.1% BSA |
| Purity | Immunogen affinity purified |
| Purification notes | ab240690 was affinity purified using an epitope specific to DMXL2 immobilized on solid support. |
| Clonality | Polyclonal |
| Isotype | IgG |

Applications

The Abpromise guarantee

Our **Abpromise guarantee** covers the use of ab240690 in the following tested applications.

The application notes include recommended starting dilutions; optimal dilutions/concentrations should be determined by the end user.

| Application | Abreviews | Notes |
|-------------|-----------|---|
| WB | | 1/1000. Predicted molecular weight: 340 kDa. |
| IP | | Use at an assay dependent concentration. Use 20 µl/mg lysate. |

Target

Function

May serve as a scaffold protein for MADD and RAB3GA on synaptic vesicles.

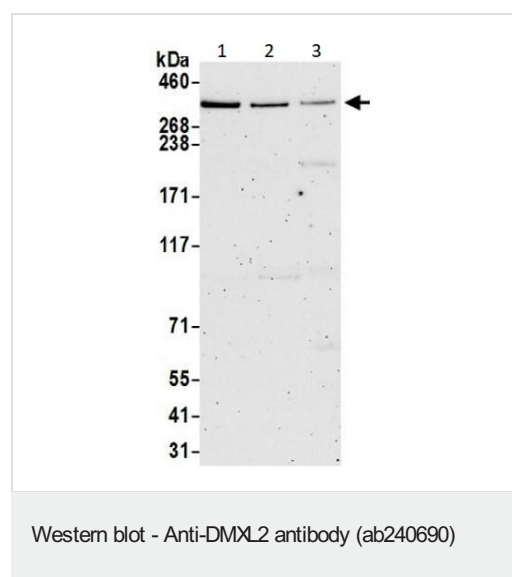
Sequence similarities

Contains 16 WD repeats.

Cellular localization

Cytoplasmic vesicle > secretory vesicle > synaptic vesicle membrane.

Images



All lanes : Anti-DMXL2 antibody (ab240690) at 1/1000 dilution

Lane 1 : HeLa (human epithelial cell line from cervix adenocarcinoma) whole cell lysate

Lane 2 : HEK-293T (human epithelial cell line from embryonic kidney transformed with large T antigen) whole cell lysate

Lane 3 : Jurkat (human T cell leukemia cell line from peripheral blood) whole cell lysate

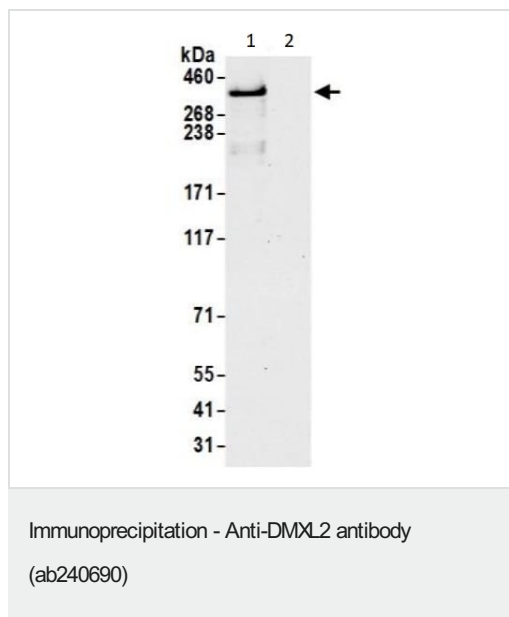
Lysates/proteins at 50 µg per lane.

Developed using the ECL technique.

Predicted band size: 340 kDa

Exposure time: 3 minutes

Lysates prepared using NETN lysis buffer.



DMXL2 immunoprecipitated from Jurkat (human T cell leukemia cell line from peripheral blood) whole cell lysate (1.0 mg per IP reaction; 20% of IP loaded) prepared using NETN lysis buffer. Western blot was performed from the immunoprecipitate using ab240690 at 1/100 dilution.

Lane 1: ab240690 used for IP at 20 µl per reaction in Jurkat whole cell lysate.

Lane 2: Control IgG iP in Jurkat whole cell lysate.

Detection: Chemiluminescence with an exposure time of 30 seconds.

Please note: All products are "FOR RESEARCH USE ONLY. NOT FOR USE IN DIAGNOSTIC PROCEDURES"

Our Abpromise to you: Quality guaranteed and expert technical support

- Replacement or refund for products not performing as stated on the datasheet
- Valid for 12 months from date of delivery
- Response to your inquiry within 24 hours
- We provide support in Chinese, English, French, German, Japanese and Spanish
- Extensive multi-media technical resources to help you
- We investigate all quality concerns to ensure our products perform to the highest standards

If the product does not perform as described on this datasheet, we will offer a refund or replacement. For full details of the Abpromise, please visit <https://www.abcam.com/abpromise> or contact our technical team.

Terms and conditions

- Guarantee only valid for products bought direct from Abcam or one of our authorized distributors