


## Product datasheet

### Anti-DNAJB9 antibody - C-terminal ab227055

1 Image

#### Overview

---

<b>Product name</b>	Anti-DNAJB9 antibody - C-terminal
<b>Description</b>	Rabbit polyclonal to DNAJB9 - C-terminal
<b>Host species</b>	Rabbit
<b>Tested applications</b>	<b>Suitable for:</b> WB
<b>Species reactivity</b>	<b>Reacts with:</b> Human <b>Predicted to work with:</b> Mouse, Rat, Chicken, Cow, Xenopus laevis, Chimpanzee, Rhesus monkey 
<b>Immunogen</b>	Synthetic peptide within Human DNAJB9 (C terminal). The exact sequence is proprietary. Conjugated to a carrier protein. Database link: <a href="#">Q9UBS3</a>
<b>Positive control</b>	WB: DNAJB9 transfected HEK-293T cell lysate.
<b>General notes</b>	<p>The Life Science industry has been in the grips of a reproducibility crisis for a number of years. Abcam is leading the way in addressing this with our range of recombinant monoclonal antibodies and knockout edited cell lines for gold-standard validation. Please check that this product meets your needs before purchasing.</p> <p>If you have any questions, special requirements or concerns, please send us an inquiry and/or contact our Support team ahead of purchase. Recommended alternatives for this product can be found below, along with publications, customer reviews and Q&amp;As</p>

#### Properties

---

<b>Form</b>	Liquid
<b>Storage instructions</b>	Shipped at 4°C. Store at +4°C short term (1-2 weeks). Upon delivery aliquot. Store at -20°C long term. Avoid freeze / thaw cycle.
<b>Storage buffer</b>	pH: 7.00 Preservative: 0.01% Thimerosal (merthiolate) Constituents: 1.21% Tris, 0.75% Glycine, 10% Glycerol (glycerin, glycerine)
<b>Purity</b>	Immunogen affinity purified
<b>Clonality</b>	Polyclonal
<b>Isotype</b>	IgG

## Applications

### The Abpromise guarantee

Our **Abpromise guarantee** covers the use of ab227055 in the following tested applications.

The application notes include recommended starting dilutions; optimal dilutions/concentrations should be determined by the end user.

Application	Abreviews	Notes
WB		1/500 - 1/3000. Predicted molecular weight: 26 kDa.

## Target

### Function

Acts as a co-chaperone with an Hsp70 protein.

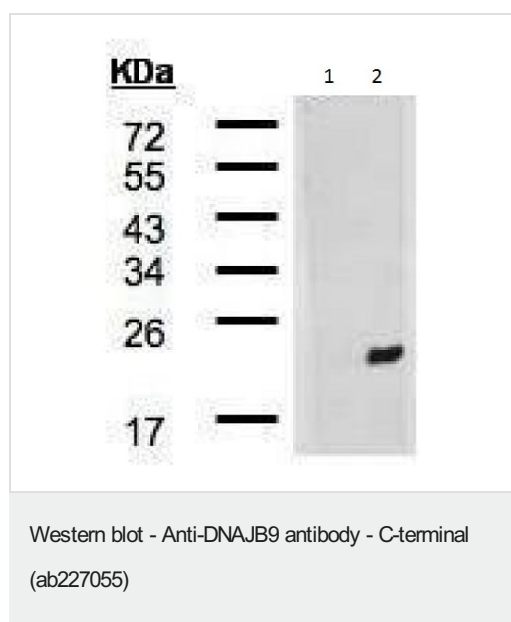
### Sequence similarities

Contains 1 J domain.

### Cellular localization

Cytoplasm. Nucleus. Stress induces its translocation to the nucleus.

## Images



**All lanes :** Anti-DNAJB9 antibody - C-terminal (ab227055) at 1/500 dilution

**Lane 1 :** Non-transfected HEK-293T (human epithelial cell line from embryonic kidney transformed with large T antigen) lysate

**Lane 2 :** DNAJB9 transfected HEK-293T (human epithelial cell line from embryonic kidney transformed with large T antigen) lysate

Developed using the ECL technique.

**Predicted band size:** 26 kDa

12% SDS PAGE

**Please note:** All products are "FOR RESEARCH USE ONLY. NOT FOR USE IN DIAGNOSTIC PROCEDURES"

## Our Abpromise to you: Quality guaranteed and expert technical support

- Replacement or refund for products not performing as stated on the datasheet
- Valid for 12 months from date of delivery
- Response to your inquiry within 24 hours
- We provide support in Chinese, English, French, German, Japanese and Spanish
- Extensive multi-media technical resources to help you

- We investigate all quality concerns to ensure our products perform to the highest standards

If the product does not perform as described on this datasheet, we will offer a refund or replacement. For full details of the Abpromise, please visit <https://www.abcam.com/abpromise> or contact our technical team.

### **Terms and conditions**

---

- Guarantee only valid for products bought direct from Abcam or one of our authorized distributors