


Anti-DOCK8 antibody ab227529

2 Images

Overview

Product name	Anti-DOCK8 antibody
Description	Rabbit polyclonal to DOCK8
Host species	Rabbit
Tested applications	Suitable for: IHC-P, WB
Species reactivity	Reacts with: Mouse, Human Predicted to work with: Rat, Cow 
Immunogen	Synthetic peptide within Human DOCK8 (C terminal). The exact sequence is proprietary. Conjugated to a carrier protein. Database link: Q8NF50
Positive control	WB: Raji and NCI-H929 whole cell extracts. IHC-P: Mouse lung tissue.
General notes	<p>The Life Science industry has been in the grips of a reproducibility crisis for a number of years. Abcam is leading the way in addressing this with our range of recombinant monoclonal antibodies and knockout edited cell lines for gold-standard validation. Please check that this product meets your needs before purchasing.</p> <p>If you have any questions, special requirements or concerns, please send us an inquiry and/or contact our Support team ahead of purchase. Recommended alternatives for this product can be found below, along with publications, customer reviews and Q&As</p>

Properties

Form	Liquid
Storage instructions	Shipped at 4°C. Store at +4°C short term (1-2 weeks). Upon delivery aliquot. Store at -20°C long term. Avoid freeze / thaw cycle.
Storage buffer	pH: 7.00 Preservative: 0.025% Proclin 300 Constituents: 79% PBS, 20% Glycerol (glycerin, glycerine)
Purity	Immunogen affinity purified
Clonality	Polyclonal
Isotype	IgG

Applications

The Abpromise guarantee

Our **Abpromise guarantee** covers the use of ab227529 in the following tested applications.

The application notes include recommended starting dilutions; optimal dilutions/concentrations should be determined by the end user.

Application	Abreviews	Notes
IHC-P		1/100 - 1/1000.
WB		1/500 - 1/3000. Predicted molecular weight: 239 kDa.

Target

Function

Potential guanine nucleotide exchange factor (GEF). GEF proteins activate some small GTPases by exchanging bound GDP for free GTP.

Involvement in disease

Defects in DOCK8 are the cause of hyperimmunoglobulin E recurrent infection syndrome autosomal recessive (AR-HIES) [MIM:243700]. It is a rare disorder of immunity characterized by immunodeficiency, recurrent infections, eczema, increased serum IgE, eosinophilia and lack of connective tissue and skeletal involvement.

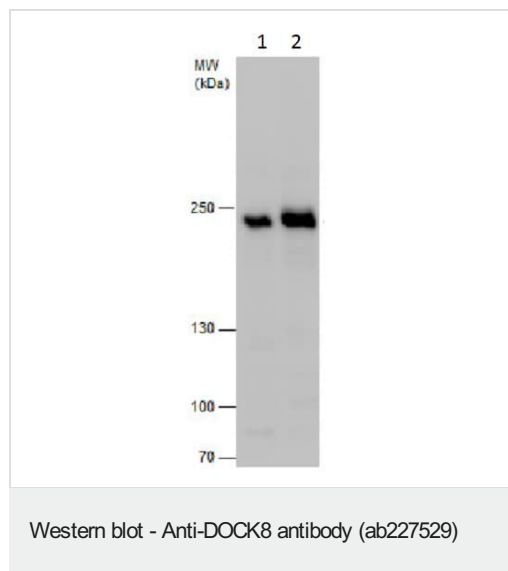
Sequence similarities

Belongs to the DOCK family.
Contains 1 DHR-1 (CZH-1) domain.
Contains 1 DHR-2 (CZH-2) domain.

Domain

The DHR-2 domain may mediate some GEF activity.

Images



All lanes : Anti-DOCK8 antibody (ab227529) at 1/1000 dilution

Lane 1 : Raji (human Burkitt's lymphoma cell line) whole cell extract

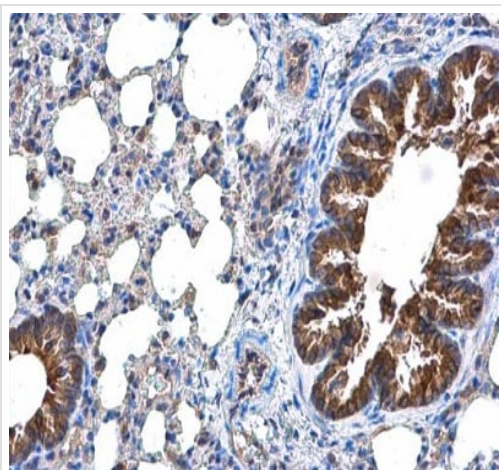
Lane 2 : NCI-H929 (human bone marrow lymphoblast cell line) whole cell extract

Lysates/proteins at 30 µg per lane.

Developed using the ECL technique.

Predicted band size: 239 kDa

5% SDS-PAGE



Immunohistochemistry (Formalin/PFA-fixed paraffin-embedded sections) - Anti-DOCK8 antibody (ab227529)

Paraffin-embedded mouse lung tissue stained for DOCK8 with ab227529 (1/500 dilution) in immunohistochemical analysis.

Please note: All products are "FOR RESEARCH USE ONLY. NOT FOR USE IN DIAGNOSTIC PROCEDURES"

Our Abpromise to you: Quality guaranteed and expert technical support

- Replacement or refund for products not performing as stated on the datasheet
- Valid for 12 months from date of delivery
- Response to your inquiry within 24 hours
- We provide support in Chinese, English, French, German, Japanese and Spanish
- Extensive multi-media technical resources to help you
- We investigate all quality concerns to ensure our products perform to the highest standards

If the product does not perform as described on this datasheet, we will offer a refund or replacement. For full details of the Abpromise, please visit <https://www.abcam.com/abpromise> or contact our technical team.

Terms and conditions

- Guarantee only valid for products bought direct from Abcam or one of our authorized distributors