


# Anti-Dopamine Receptor D3/DRD3 antibody ab150543

1 Image

## Overview

<b>Product name</b>	Anti-Dopamine Receptor D3/DRD3 antibody
<b>Description</b>	Rabbit polyclonal to Dopamine Receptor D3/DRD3
<b>Host species</b>	Rabbit
<b>Tested applications</b>	<b>Suitable for:</b> IHC-P
<b>Species reactivity</b>	<b>Reacts with:</b> Human <b>Predicted to work with:</b> Mouse, Rat, Rabbit, Horse, Hamster, Dog, Pig, Chimpanzee, Monkey, Common marmoset, Bat, Elephant 
<b>Immunogen</b>	Synthetic peptide corresponding to Human Dopamine Receptor D3/DRD3. Database link: <a href="#">NP_000787.2</a>
<b>Positive control</b>	Human brain tissue (globus pallidus).
<b>General notes</b>	<p>The Life Science industry has been in the grips of a reproducibility crisis for a number of years. Abcam is leading the way in addressing this with our range of recombinant monoclonal antibodies and knockout edited cell lines for gold-standard validation. Please check that this product meets your needs before purchasing.</p> <p>If you have any questions, special requirements or concerns, please send us an inquiry and/or contact our Support team ahead of purchase. Recommended alternatives for this product can be found below, along with publications, customer reviews and Q&amp;As</p>

## Properties

<b>Form</b>	Liquid
<b>Storage instructions</b>	Shipped at 4°C.
<b>Storage buffer</b>	pH: 7.4 Preservative: 0.1% Sodium azide Constituent: 99% PBS
<b>Purity</b>	Immunogen affinity purified
<b>Clonality</b>	Polyclonal
<b>Isotype</b>	IgG

## Applications

## The Abpromise guarantee

Our **Abpromise guarantee** covers the use of ab150543 in the following tested applications.

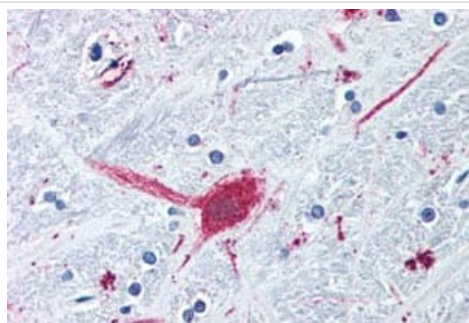
The application notes include recommended starting dilutions; optimal dilutions/concentrations should be determined by the end user.

Application	Abreviews	Notes
IHC-P		Use a concentration of 16 - 32 µg/ml. Perform heat mediated antigen retrieval with citrate buffer pH 6 before commencing with IHC staining protocol.

## Target

<b>Function</b>	This is one of the five types (D1 to D5) of receptors for dopamine. The activity of this receptor is mediated by G proteins which inhibit adenylyl cyclase. Promotes cell proliferation.
<b>Tissue specificity</b>	Brain.
<b>Involvement in disease</b>	Genetic variation in DRD3 is associated with essential tremor hereditary type 1 (ETM1) [MIM:190300]. ETM1 is the most common movement disorder. The main feature is postural tremor of the arms. Head, legs, trunk, voice, jaw, and facial muscles also may be involved. The condition can be aggravated by emotions, hunger, fatigue and temperature extremes, and may cause a functional disability or even incapacitation. Inheritance is autosomal dominant.
<b>Sequence similarities</b>	Belongs to the G-protein coupled receptor 1 family.
<b>Post-translational modifications</b>	Phosphorylated by GRK4 (GRK4-alpha and GRK4-gamma).
<b>Cellular localization</b>	Cell membrane. Both membrane-bound and scattered in the cytoplasm during basal conditions. Receptor stimulation results in the rapid internalization and sequestration of the receptors at the perinuclear area (5 and 15 minutes), followed by the dispersal of the receptors to the membrane (30 minutes). DRD3 and GRK4 co-localize in lipid rafts of renal proximal tubule cells.

## Images



Immunohistochemical analysis of formalin-fixed, paraffin-embedded Human brain tissue (globus pallidus) labeling Dopamine Receptor D3/DRD3 with ab150543 at 16 µg/ml.

Immunohistochemistry (Formalin/PFA-fixed paraffin-embedded sections) - Anti-Dopamine Receptor D3/DRD3 antibody (ab150543)

**Please note:** All products are "FOR RESEARCH USE ONLY. NOT FOR USE IN DIAGNOSTIC PROCEDURES"

## **Our Abpromise to you: Quality guaranteed and expert technical support**

---

- Replacement or refund for products not performing as stated on the datasheet
- Valid for 12 months from date of delivery
- Response to your inquiry within 24 hours
  
- We provide support in Chinese, English, French, German, Japanese and Spanish
- Extensive multi-media technical resources to help you
- We investigate all quality concerns to ensure our products perform to the highest standards

If the product does not perform as described on this datasheet, we will offer a refund or replacement. For full details of the Abpromise, please visit <https://www.abcam.com/abpromise> or contact our technical team.

## **Terms and conditions**

---

- Guarantee only valid for products bought direct from Abcam or one of our authorized distributors