

## Product datasheet

# Anti-DPP3 antibody [EPR9020(B)] ab133671

Recombinant RabMAb

[1 References](#) [2 Images](#)

### Overview

<b>Product name</b>	Anti-DPP3 antibody [EPR9020(B)]
<b>Description</b>	Rabbit monoclonal [EPR9020(B)] to DPP3
<b>Host species</b>	Rabbit
<b>Tested applications</b>	<b>Suitable for:</b> WB <b>Unsuitable for:</b> Flow Cyt (Intra), ICC/IF, IHC-P or IP
<b>Species reactivity</b>	<b>Reacts with:</b> Human
<b>Immunogen</b>	Synthetic peptide. This information is proprietary to Abcam and/or its suppliers.
<b>Positive control</b>	Human fetal liver lysate, HeLa cell lysate, 293T cell lysate, U87 MG cells and cell lysate.
<b>General notes</b>	<p>This product is a recombinant monoclonal antibody, which offers several advantages including:</p> <ul style="list-style-type: none"><li>- High batch-to-batch consistency and reproducibility</li><li>- Improved sensitivity and specificity</li><li>- Long-term security of supply</li><li>- Animal-free production</li></ul> <p>For more information <a href="#">see here</a>.</p> <p>Our RabMAb<sup>®</sup> technology is a patented hybridoma-based technology for making rabbit monoclonal antibodies. For details on our patents, please refer to <a href="#">RabMAb<sup>®</sup> patents</a>.</p> <p>Mouse, Rat: We have preliminary internal testing data to indicate this antibody may not react with these species. Please contact us for more information.</p>

### Properties

<b>Form</b>	Liquid
<b>Storage instructions</b>	Shipped at 4°C. Store at -20°C. Stable for 12 months at -20°C.
<b>Storage buffer</b>	pH: 7.20 Preservative: 0.01% Sodium azide Constituents: 9% PBS, 40% Glycerol (glycerin, glycerine), 0.05% BSA, 50% Tissue culture supernatant
<b>Purity</b>	Tissue culture supernatant
<b>Clonality</b>	Monoclonal

Clone number EPR9020(B)  
Isotype IgG

## Applications

**The Abpromise guarantee** Our **Abpromise guarantee** covers the use of ab133671 in the following tested applications. The application notes include recommended starting dilutions; optimal dilutions/concentrations should be determined by the end user.

Application	Abreviews	Notes
WB		1/10000 - 1/50000. Detects a band of approximately 83 kDa (predicted molecular weight: 83 kDa).

**Application notes** Is unsuitable for Flow Cyt (Intra), ICC/IF, IHC-P or IP.

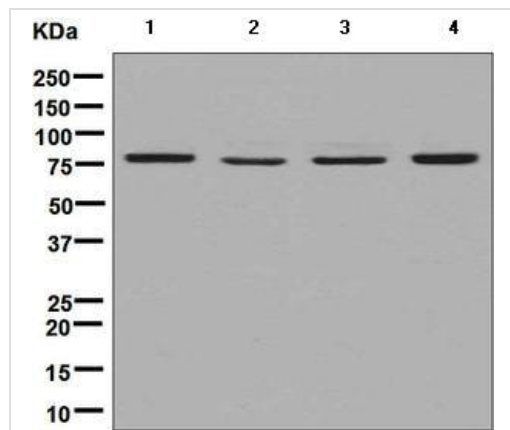
## Target

**Function** Cleaves Arg-Arg-beta-naphthylamide.

**Sequence similarities** Belongs to the peptidase M49 family.

**Cellular localization** Cytoplasm.

## Images



Western blot - Anti-DPP3 antibody [EPR9020(B)]  
(ab133671)

**All lanes** : Anti-DPP3 antibody [EPR9020(B)] (ab133671) at 1/10000 dilution

**Lane 1** : Human fetal liver lysate

**Lane 2** : HeLa cell lysate

**Lane 3** : 293T cell lysate

**Lane 4** : U87 MG cell lysate

Lysates/proteins at 10 µg per lane.

### Secondary

**All lanes** : Goat anti-rabbit HRP conjugated antibody at 1/2000 dilution

**Predicted band size:** 83 kDa

Why choose a recombinant antibody?

**Research with confidence**  
Consistent and reproducible results

**Long-term and scalable supply**  
Recombinant technology

**Success from the first experiment**  
Confirmed specificity

**Ethical standards compliant**  
Animal-free production

Anti-DPP3 antibody [EPR9020(B)] (ab133671)

**Please note:** All products are "FOR RESEARCH USE ONLY. NOT FOR USE IN DIAGNOSTIC PROCEDURES"

### Our Abpromise to you: Quality guaranteed and expert technical support

---

- Replacement or refund for products not performing as stated on the datasheet
- Valid for 12 months from date of delivery
- Response to your inquiry within 24 hours
- We provide support in Chinese, English, French, German, Japanese and Spanish
- Extensive multi-media technical resources to help you
- We investigate all quality concerns to ensure our products perform to the highest standards

If the product does not perform as described on this datasheet, we will offer a refund or replacement. For full details of the Abpromise, please visit <https://www.abcam.com/abpromise> or contact our technical team.

### Terms and conditions

---

- Guarantee only valid for products bought direct from Abcam or one of our authorized distributors